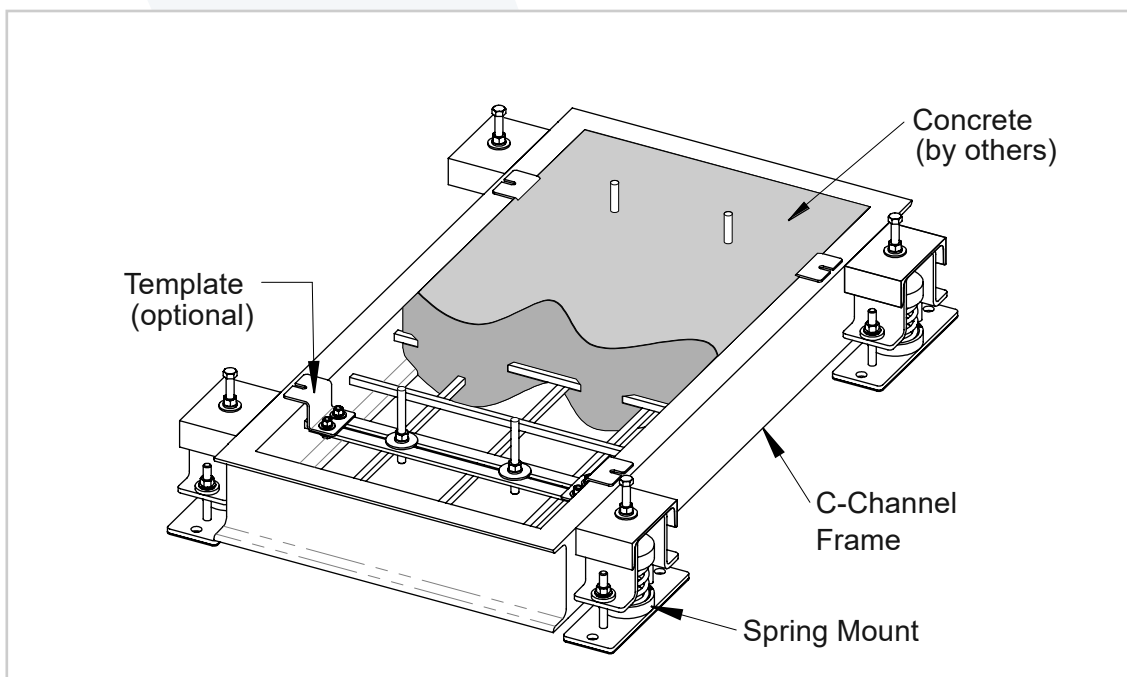


## HEAVY-DUTY WELDED INERTIA BASE - 6" HEIGHT

**WIB6 - Heavy-duty Welded Inertia Bases** are commonly used in the industry to reduce the amplitude of mechanical vibrations, lower the center of gravity, and minimize equipment movement during operation. When filled with concrete and supported by Vibrasystems' spring mounts, the **WIB6** provides excellent vibration isolation. **WIB6 - Welded Inertia Bases** are designed according to ASHRAE guidelines. Constructed from structural steel channels and reinforced with welded steel square bars, each **WIB6** included welded brackets for the installation of spring mounts beneath. The welded inertia bases are finished with a rustproof paint.

### Recommended for:

HVAC equipment such as air compressors, vacuum pumps, close-coupled pumps, inline pumps, end suction pumps, double suction pumps, package pump systems, axial fans, plenum fans, centrifugal fans, engine-driven generators, packaged Air Handler Unit, packaged Air Conditioner Unit, industrial centrifuges, etc.



### Features:

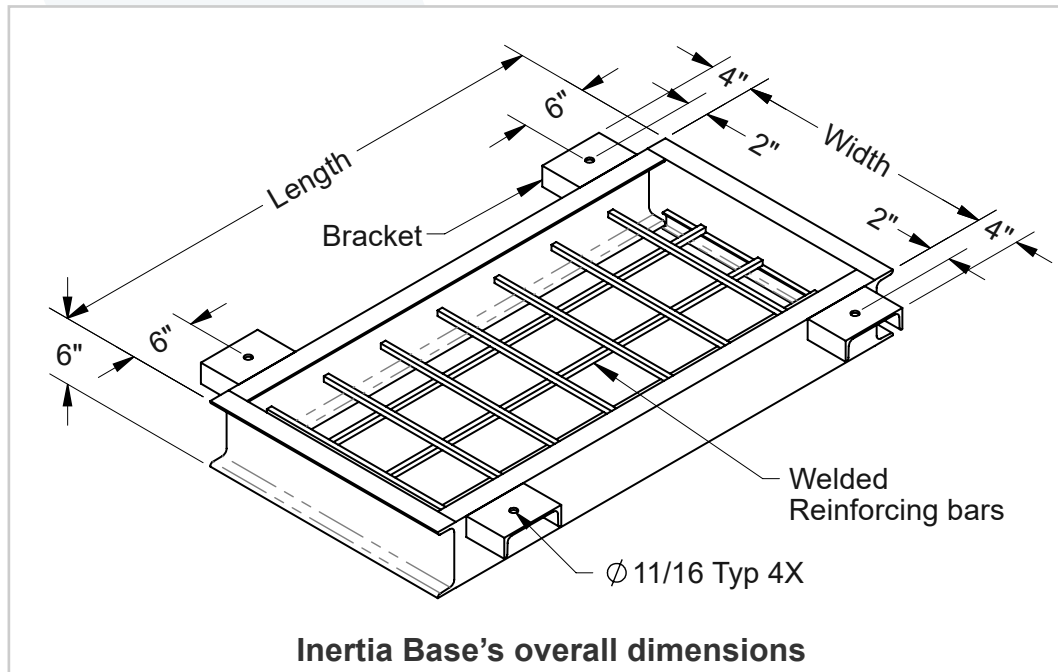
- ✓ Welded bars enhance the rigidity of the steel frame.
- ✓ Rustproof paint provides excellent corrosion resistance.
- ✓ Templates with anchor bolts are optional.
- ✓ Spring mounts are provided separately with the WIB6 Inertia Base and are available in 1-inch, 2-inch, and 3-inch deflection options.

### Recommendations:

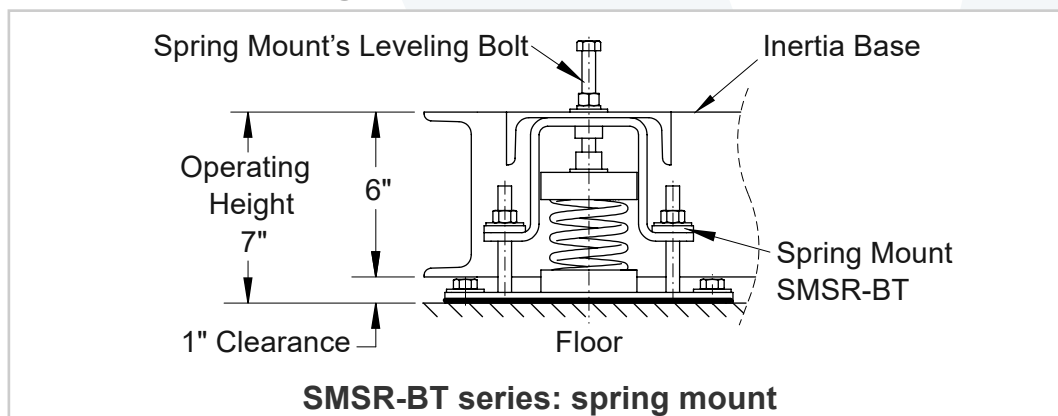
- ✓ Inertia Base's height must be a minimum of 1/10 of the longest span between spring isolators, but not less than 6".
- ✓ Inertia Base's weight (frame + concrete) should be 2 times the total installed equipment's weight.
- ✓ Concrete minimum 3,000 psi strength and density of 150 lb/cub. ft (concrete by others).
- ✓ After WIB6's installation is complete, the frame must maintain a minimum operating clearance of 1 inch from the floor.

## HEAVY-DUTY WELDED INERTIA BASE - 6" HEIGHT

| Model      | Dimensions in inches (in) |        |        | Approximate Weight in Pounds (lbs) |          |                  |
|------------|---------------------------|--------|--------|------------------------------------|----------|------------------|
|            | Width                     | Length | Height | Frame                              | Concrete | Frame + Concrete |
| WIB6 24X48 | 24                        | 48     | 6      | 135                                | 550      | 685              |
| WIB6 36X60 | 36                        | 60     | 6      | 190                                | 1,050    | 1,240            |
| WIB6 48X72 | 48                        | 72     | 6      | 250                                | 1,700    | 1,950            |



### Inertia Base with the spring mount



### Notes:

- Custom sizes can be supplied upon request.
- Concrete's weight - assuming minimum 3,000 psi strength and density of 150 lb/cub.ft (concrete by others).
- Please see submittal drawing and Installation Instructions for more information.