

STAINLESS STEEL HEAVY-DUTY VIBRATION DAMPERS

VTMS compression shear mounts are designed for heavy-duty applications where shear loads could be up to 30% of maximum load in combination with vertical load.

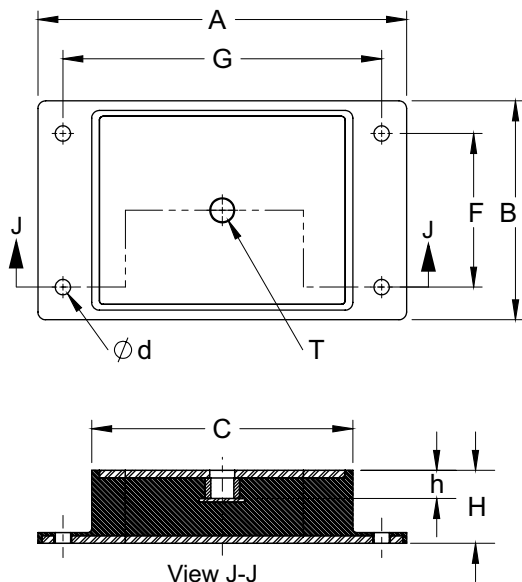
Recommended for:

Presses, blowers, pumps, engines, vibrators, rolling mills, crushers, transformers, injection molding machines, surface grinders, and similar equipment.

Features:

- ✓ Effectively isolates machine vibration and shock loads from transferring to the floor.
- ✓ Low installation height provides better stability under lateral loads.
- ✓ 316L stainless steel for metal plates.
- ✓ Mounts can withstand shear loads of up to a maximum of 30% of vertical compression load.
- ✓ High dynamic EPDM rubber compound and high compressive stiffness.

Model	Compression load (lbs)		Overall dimensions in inches (in)										Ship. Weight (lbs)
	Non-Impact	Impact	Length A	Width B	Height H	C	F	G	h	Hole Ø d	Thread T		
VTMS-2	2,000	1,200	8	4	2	4	3	6	1	3/8	1/2-13	4.5	
VTMS-3	3,000	1,800	8	4	2	4	3	6	1	3/8	1/2-13	4.5	
VTMS-5	5,000	3,000	8	4	2	4	3	6	1	3/8	1/2-13	4.5	
VTMS-10	8,000	4,000	12	7-1/4	2-3/8	8-1/2	5	10-3/8	1-1/4	9/16	3/4-10	14	
VTMS-15	15,000	9,000	12	7-1/4	2-3/8	8-1/2	5	10-3/8	1-1/4	9/16	3/4-10	14	

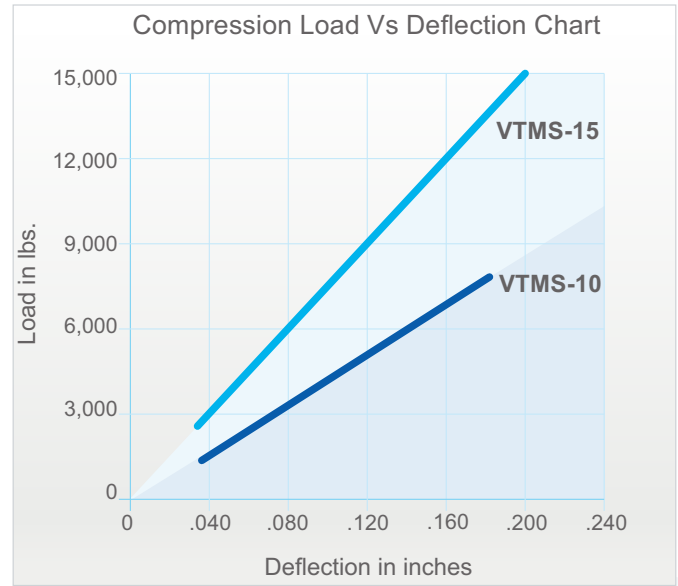
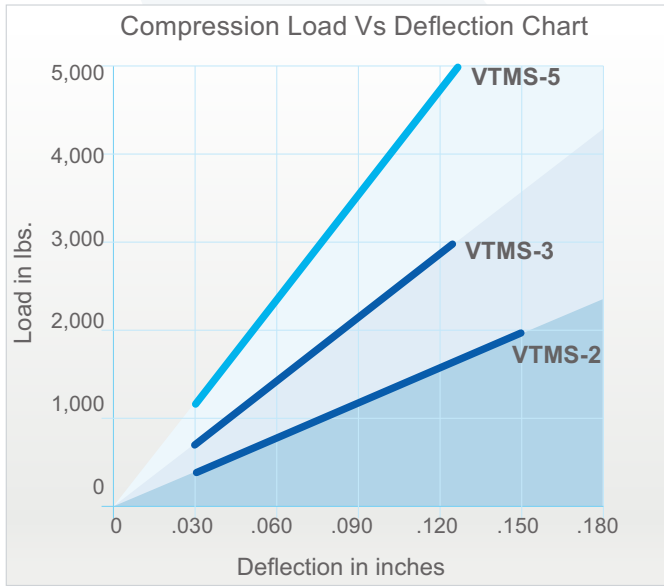


VTMS



VTMS

STAINLESS STEEL HEAVY-DUTY VIBRATION DAMPERS



Notes:

- a) Shear load should not exceed 30% of compression load.
- b) For food, pharmaceutical, and hygiene critical applications mounts are made of 304 stainless steel and food grade rubber compounds.
- c) Contact Vibrasystems technical department for optimal material selection.