

# Feet

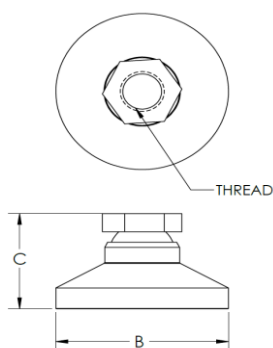
## B Series - Steel Ball and Socket Feet



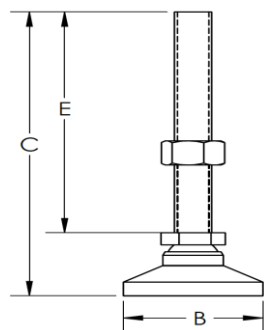
**B** series feet are ball and socket type that range from light to heavy-duty applications. Available with a stud or female thread type. Swivel base will pivot up to 15° in any direction to compensate for uneven floors or bases.

**Features:**

- All studs come with jam nuts.
- Yellow zinc plating.



Model	BTA - Base Type			
BTA	Max Load (lbs)	B (in)	C (in)	Thread (in)
BTA-025	1,000	1	45/64	1/4-20
BTA-037	3,750	1-1/4	7/8	3/8-16
BTA-050	5,000	1-7/8	1-1/8	1/2-13
BTA-062	6,000	2-1/2	1-1/4	5/8-11
BTA-075	7,400	3	1-1/2	3/4-10
BTA-100	20,000	4	1-7/8	1-8



Model	BLA - Stud Type				
BLA	Max Load (lbs)	B (in)	C (in)	E (in)	Thread (in)
BLA-025	1,000	1	3-13/64	2-1/2	1/4-20
BLA-037	3,750	1-1/4	4-7/8	4	3/8-16
BLA-050	5,000	1-7/8	5-1/8	4	1/2-13
BLA-062	6,000	2-1/2	5-1/4	4	5/8-11
BLA-075	7,400	3	5-1/2	4	3/4-10
BLA-100	20,000	4	6-1/8	4-1/4	1-8