

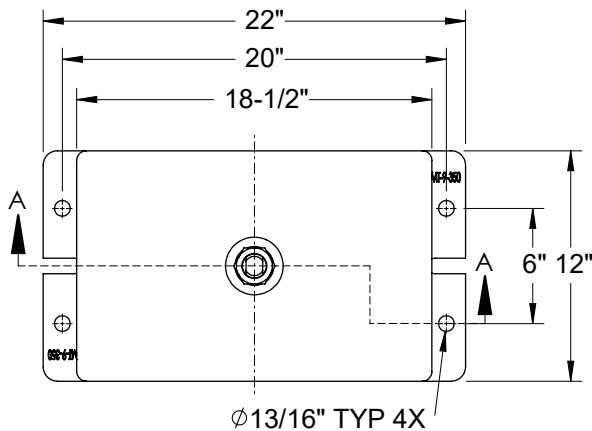
1", 2", & 3" DEFLECTION SEISMIC RESTRAINED SPRING MOUNT/SNUBBER

The models **SRMT-9** (top levelling bolt) and **SRMF-9** (flat top with built-in levelling feature) are heavy-duty Seismic Restrained Spring Mounts - Snubbers Combination. The uniquely innovative design incorporates interlocking top and bottom steel channels, which restrict the movement (snubbers effect) in all horizontal directions under lateral forces. Rubber lining inside bottom metal channels prevents metal-to-metal contact.

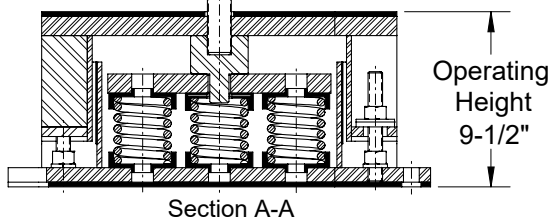


Recommended for:

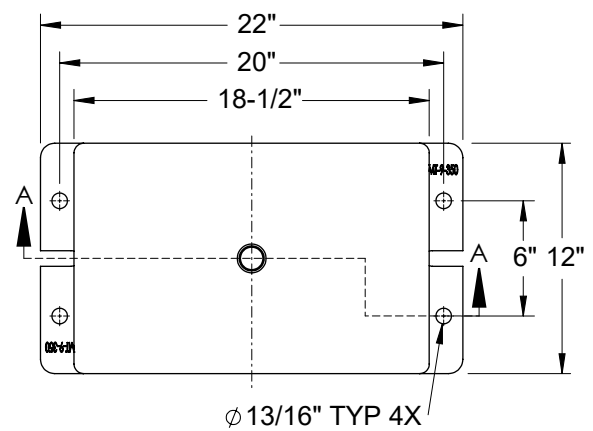
HVAC equipment, engine-generators (gensets), fan air circulation systems, compressors, pumps, chillers, AC units, cooling towers, inertia bases, etc.



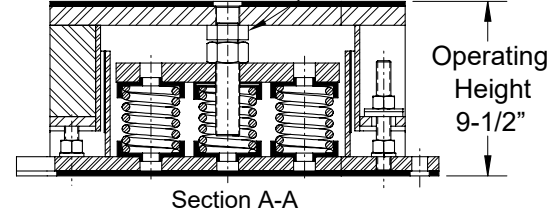
1-1/4"-12 UNF
Leveling Bolt



SRMT-9 (Top bolt): Overall dimensions



1-1/4"-12 UNF
Leveling Bolt



SRMF-9 (Flat Top): Overall dimensions

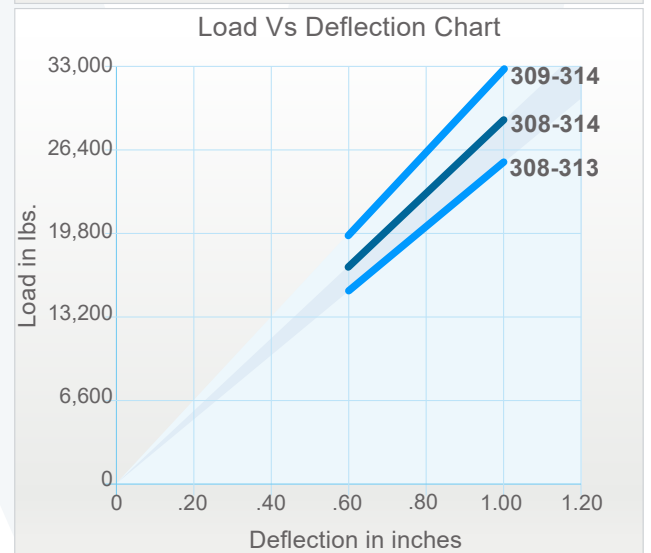
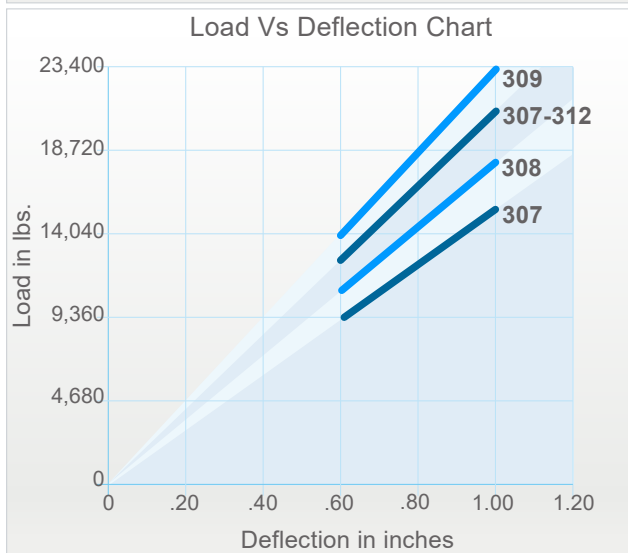
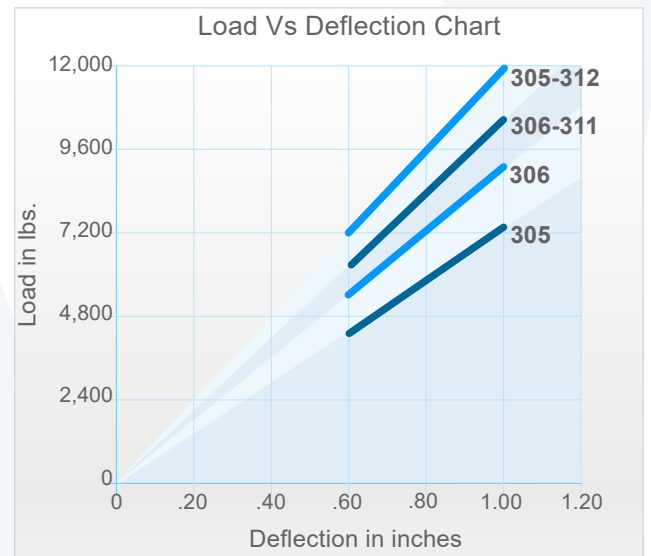
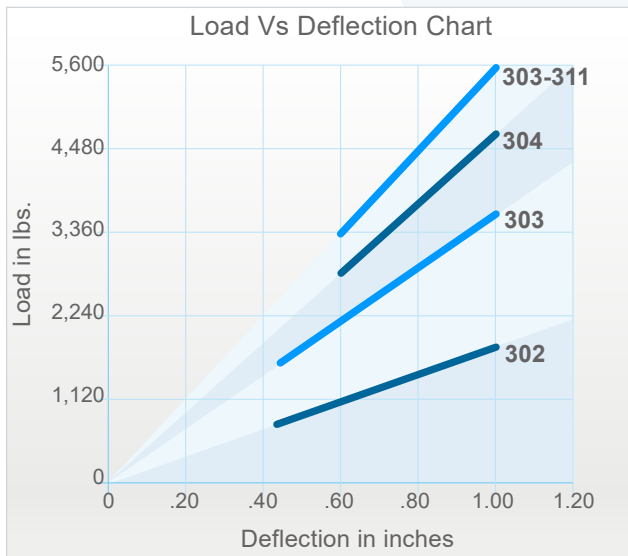
Features:

- ✓ Safety Factor: Springs will accommodate an additional 50% load from the rated load to the solid load.
- ✓ All spring mounts' elements are safe at solid load.
- ✓ Interlocking steel channels restrict the movements (snubbers) in all horizontal directions.
- ✓ Rubber lining inside metal channels prevents metal-to-metal contact.
- ✓ Zinc-plating housing and powder-coating springs provide excellent corrosion resistance.
- ✓ Acoustic elastomer spring cups provide superior vibration isolation and noise reduction.
- ✓ Springs are color-coded and easily replaceable.
- ✓ Anti-skid rubber acoustical pad.

1" DEFLECTION SEISMIC RESTRAINED SPRING MOUNT/SNUBBER

Model	Rated Load (lbs)	Deflection at Rated Load (lin)	Spring Rate (lbs/in)	Spring Color	Ship. Weight (lbs)
SRM-9-302	1,750	1	1,750	Yellow	215
SRM-9-303	3,600	1	3,600	Orange	215
SRM-9-304	4,750	1	4,750	Red	215
SRM-9-303-311	5,600	1	5,600	Orange/Green	220
SRM-9-305	7,400	1	7,400	White	215
SRM-9-306	9,000	1	9,000	Brown	215
SRM-9-306-311	10,600	1	10,600	Brown/Green	220
SRM-9-305-312	12,000	1	12,000	White/Yellow	220
SRM-9-307	15,300	1	15,300	Green	215
SRM-9-308	18,000	1	18,000	Black	215
SRM-9-307-312	20,300	1	20,300	Green/Yellow	220
SRM-9-309	23,400	1	23,400	Blue	215
SRM-9-308-313	26,000	1	26,000	Black/Orange	220
SRM-9-308-314	28,000	1	28,000	Black/Grey	220
SRM-9-309-314	33,000	1	33,000	Blue/Grey	220

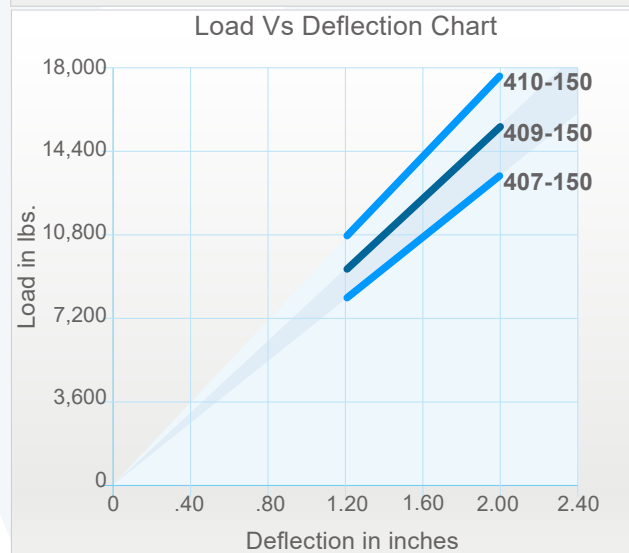
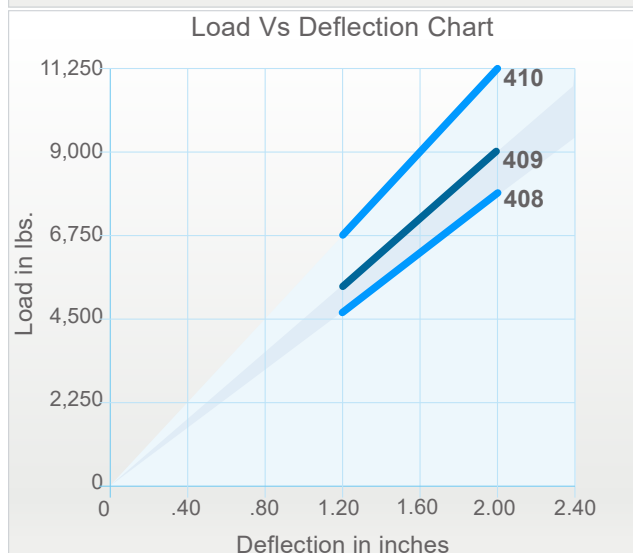
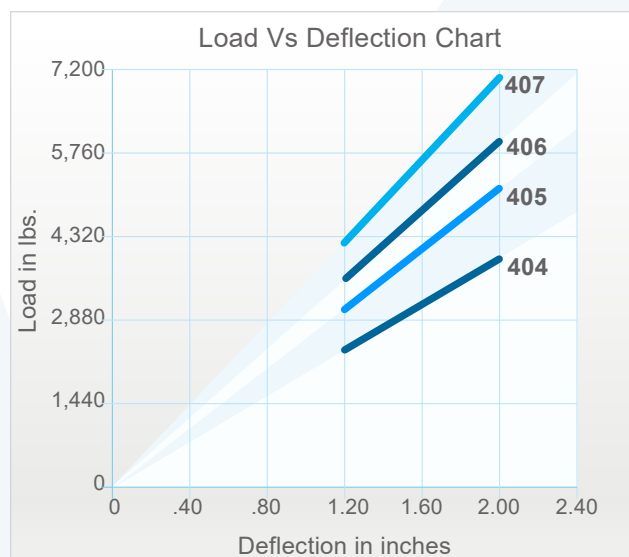
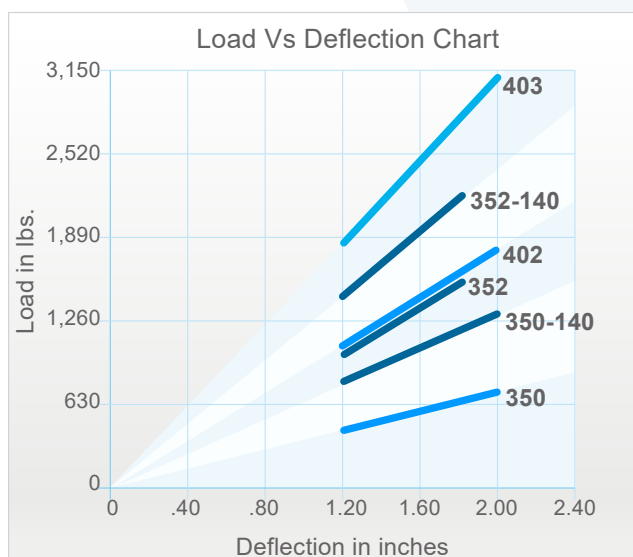
Models are available in two configurations: SRMF-9 (flat top), and SRMT-9 (top bolt).



2" DEFLECTION SEISMIC RESTRAINED SPRING MOUNT/SNUBBER

Model	Rated Load (lbs)	Deflection at Rated Load (lin)	Spring Rate (lbs/in)	Spring Color	Ship. Weight (lbs)
SRM-9-350	720	2	360	Plated	220
SRM-9-350-140	1,280	2	640	Plated/Plated	230
SRM-9-352	1,620	1.8	900	Plated	220
SRM-9-402	1,800	2	900	Grey	220
SRM-9-352-140	2,180	1.8	1,211	Plated/Plated	230
SRM-9-403	3,132	2	1,566	Black	220
SRM-9-404	4,077	2	2,038	Blue	220
SRM-9-405	5,310	2	2,655	Red	220
SRM-9-406	6,084	2	3,042	Orange	220
SRM-9-407	7,083	2	3,541	Green	220
SRM-9-408	8,262	2	4,131	White	230
SRM-9-409	9,000	2	4,500	Brown	230
SRM-9-410	11,250	2	5,625	Yellow	230
SRM-9-407-150	13,483	2	6,741	Green/Grey	240
SRM-9-409-150	15,400	2	7,700	Brown/Grey	240
SRM-9-410-150	17,650	2	8,825	Yellow/Grey	240

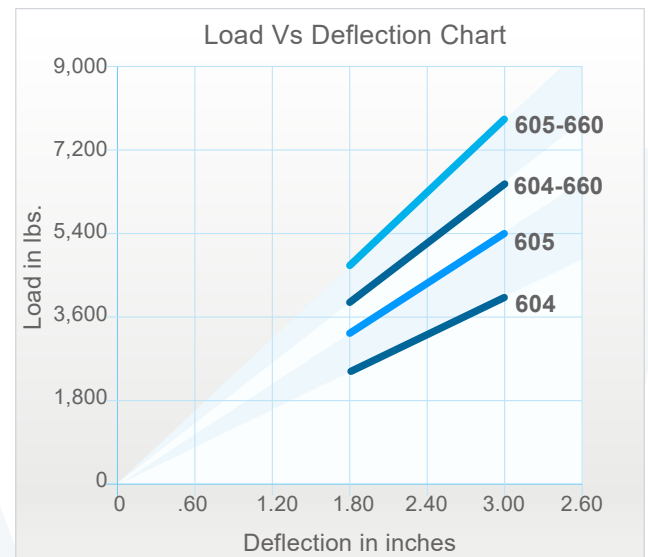
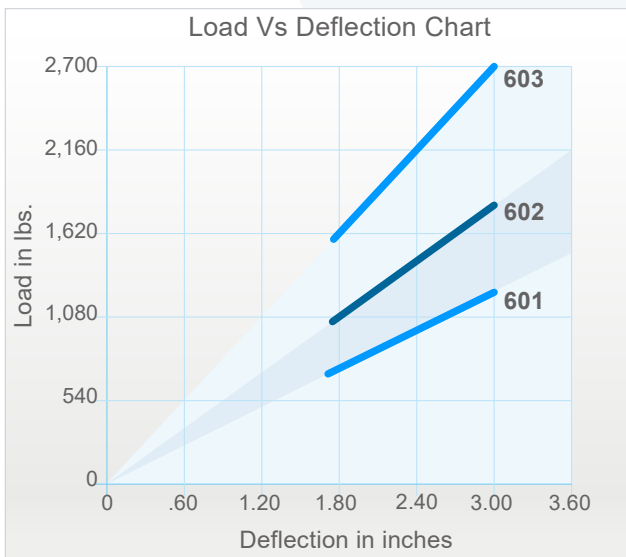
Models are available in two configurations: SRMF-9 (flat top), and SRMT-9 (top bolt).



3" DEFLECTION SEISMIC RESTRAINED SPRING MOUNT/SNUBBER

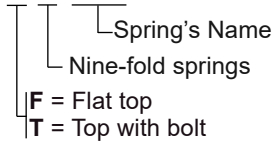
Model	Rated Load (lbs)	Deflection at Rated Load (lin)	Spring Rate (lbs/in)	Spring Color	Ship. Weight (lbs)
SRM-9-601	1,260	3	420	Blue	225
SRM-9-602	1,800	3	600	Yellow	225
SRM-9-603	2,700	3	900	Orange	225
SRM-9-604	4,050	3	1,350	Red	225
SRM-9-605	5,400	3	1,800	Green	225
SRM-9-604-660	6,450	3	2,150	Red/Grey	230
SRM-9-605-660	7,800	3	2,600	Green/Grey	230

Models are available in two configurations: SRMF-9 (flat top), and SRMT-9 (top bolt).



Model nomenclature:

SRMT-9-410



Notes:

- 300 Spring: 3" Outside diameter x 4.75" Free Length.
- 310 Spring: 1.75" Outside diameter x 4.75" Free Length.
- 400 Spring: 3" Outside diameter x 5.75" Free Length.
- 150 Spring: 2" Outside diameter x 5.75" Free Length.
- 600 Spring: 3" Outside diameter x 6.75" Free Length
- 660 Spring: 2" Outside diameter x 6.75" Free Length
- Rated load is the maximum load recommended.