

## 1.5" & 2" DEFLECTION SEISMIC RESTRAINED SPRING MOUNTS

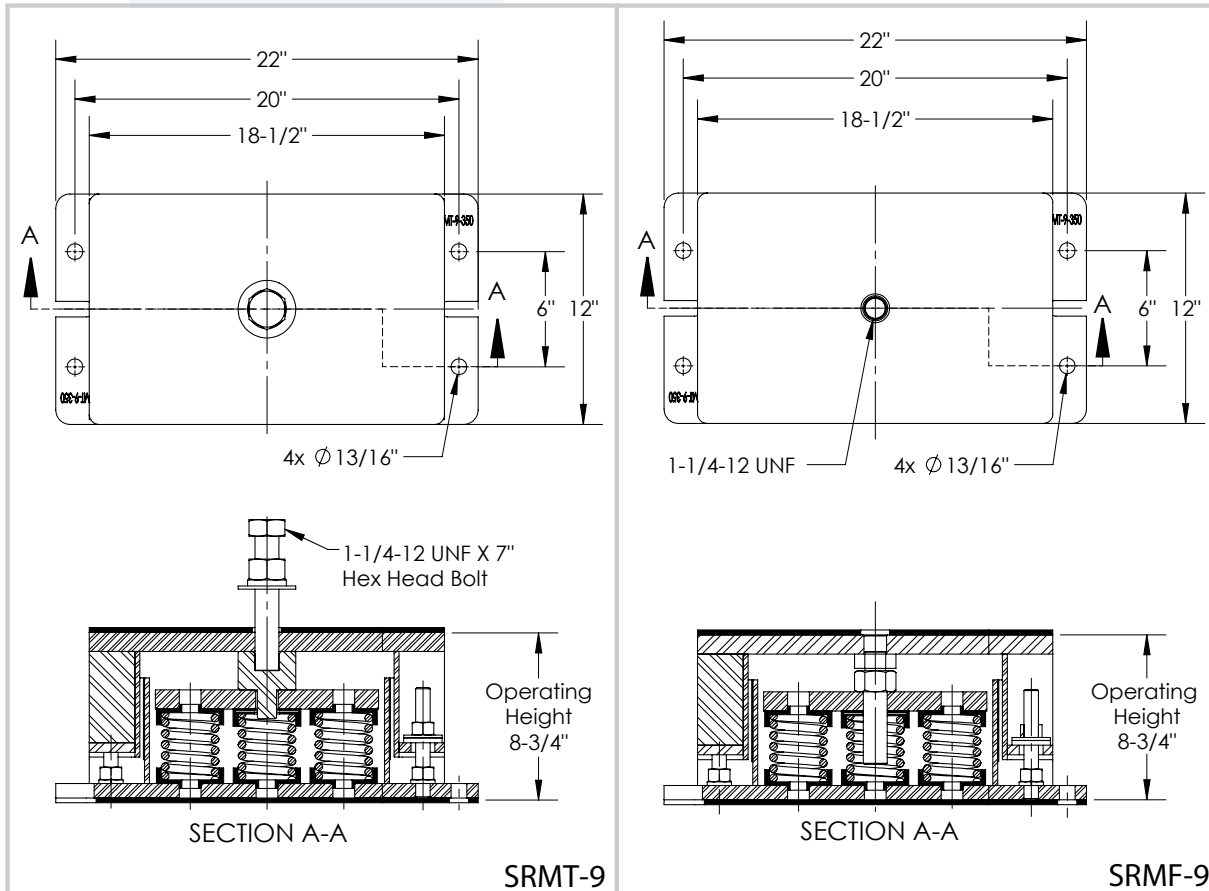
SRMT/F series mounts are designed to provide efficient isolation from critical vibrations and all-directional restraint from vertical and horizontal forces, as well as from forces due to seismic activities and high wind loads. SRMF is a flat top model with inside levelling adjustment feature. All loads, deflections and technical data are the same as in SRMT.



SRMT-9

### Recommended for:

HVAC equipment, fan air circulation systems, compressors, pumps, chillers, AC units, cooling towers, inertia bases, etc.

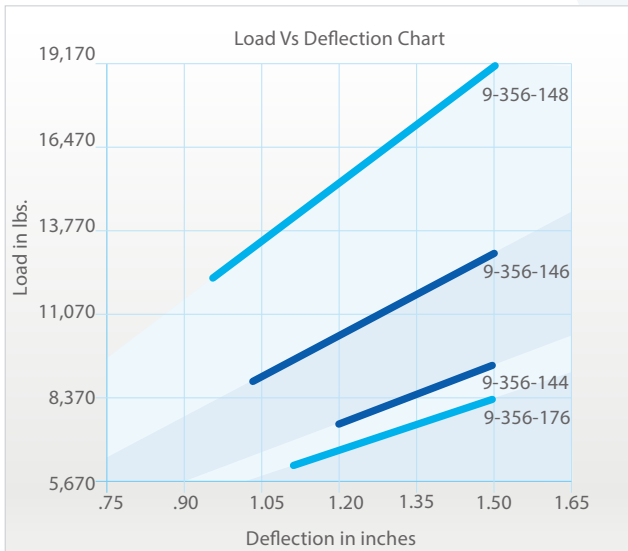
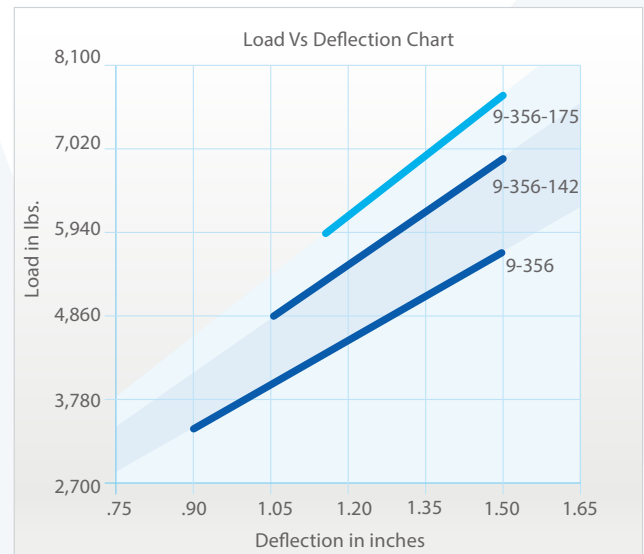
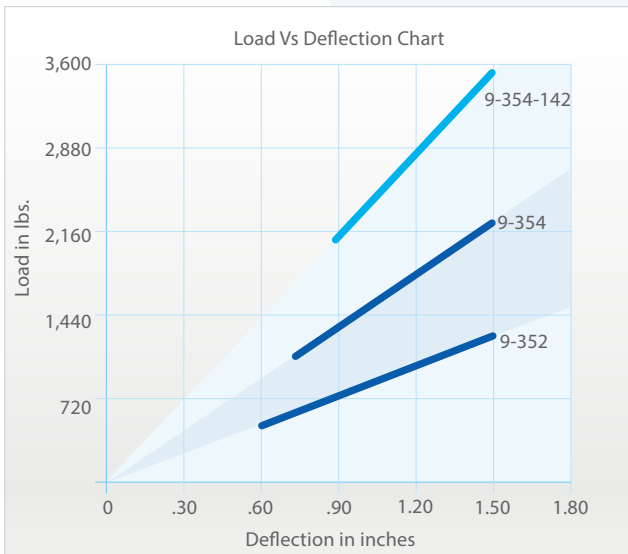


### Features:

- ✓ All springs at rated loads have 50% additional travel to solid load.
- ✓ All mounts' elements are safe at solid load.
- ✓ Safety Factor - Springs will accommodate 50% extra load from rated load to solid load. \*\*
- ✓ Recommended load range: from 50% of rated load to rated load.
- ✓ Zinc plates housings and springs provide good corrosion resistance.
- ✓ Elastomer spring base cap provides better vibration isolation, load distribution and noise reduction.
- ✓ Springs are color coded and easily replaceable.
- ✓ Rugged welded steel housing designed to withstand seismic and high wind forces.
- ✓ Anti-skid rubber acoustical pad.

## 1.5" DEFLECTION SEISMIC RESTRAINED SPRING MOUNTS

Model	Rated Load (lbs)	Deflection at Rated Load (lin)	Spring Rate (lbs/in)	Max. Vertical G Rating	Max. Horiz. G Rating	Spring Color
SRMT-9-352	SRMF-9-352	1,260	1-1/2	840		Yellow
SRMT-9-354	SRMF-9-354	2,250	1-1/2	1,500		Purple
SRMT-9-354-142	SRMF-9-354-142	3,465	1-1/2	2,310		Purple/Blue
SRMT-9-356	SRMF-9-356	5,670	1-1/2	3,780		Black
SRMT-9-356-142	SRMF-9-356-142	6,885	1-1/2	4,590		Black/Blue
SRMT-9-356-175	SRMF-9-356-175	7,695	1-1/2	5,130		Black/Brown
SRMT-9-356-176	SRMF-9-356-176	8,370	1-1/2	5,580		Black/Black
SRMT-9-356-144	SRMF-9-356-144	9,270	1-1/2	6,180		Black/Brown
SRMT-9-356-146	SRMF-9-356-146	13,320	1-1/2	8,880		Black/Yellow
SRMT-9-356-148	SRMF-9-356-148	19,170	1-1/2	12,780		Black/Green



### Notes:

- a) 350 Spring: 3" Outside diameter x 5" Free Length.
- b) 140 Spring & 170 Spring: 2" Outside diameter x 5" Free Length.
- c) 400 Spring: 3" Outside diameter x 5.75" Free Length.
- d) 150 Spring: 2" Outside diameter x 5.75" Free Length.
- e) Rated load is the maximum load recommended.

\*\* Spring 148 at rated load has 40% additional travel to solid load.

## 2" DEFLECTION SEISMIC RESTRAINED SPRING MOUNTS

Model	Rated Load (lbs)	Deflection at Rated Load (in)	Spring Rate (lbs/in)	Max. Vertical G Rating	Max. Horiz. G Rating	Spring Color
SRMT-9-350	SRMF-9-350	720	2	360		Red
SRMT-9-350-140	SRMF-9-350-140	1,440	2	720		Red/Black
SRMT-9-403	SRMF-9-403	3,132	2	1,566		Black
SRMT-9-404	SRMF-9-404	4,077	2	2,039		Blue
SRMT-9-405	SRMF-9-405	5,310	2	2,655		Red
SRMT-9-406	SRMF-9-406	6,084	2	3,042		Orange
SRMT-9-407	SRMF-9-407	7,083	2	3,542		Green
SRMT-9-408	SRMF-9-408	8,262	2	4,131		White
SRMT-9-409	SRMF-9-409	9,000	2	4,500		Brown
SRMT-9-405-150	SRMF-9-405-150	11,160	2	5,580		Red/Grey
SRMT-9-407-150	SRMF-9-407-150	12,933	2	6,467		Green/Grey
SRMT-9-409-150	SRMF-9-409-150	14,850	2	7,425		Brown/Grey

