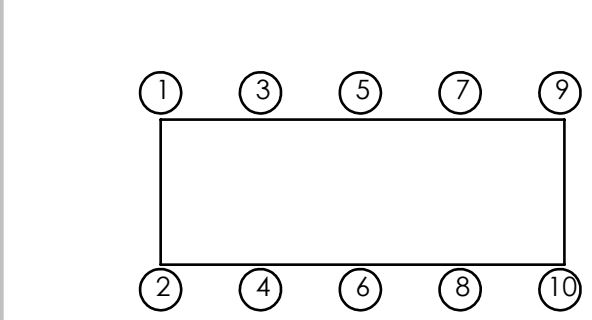
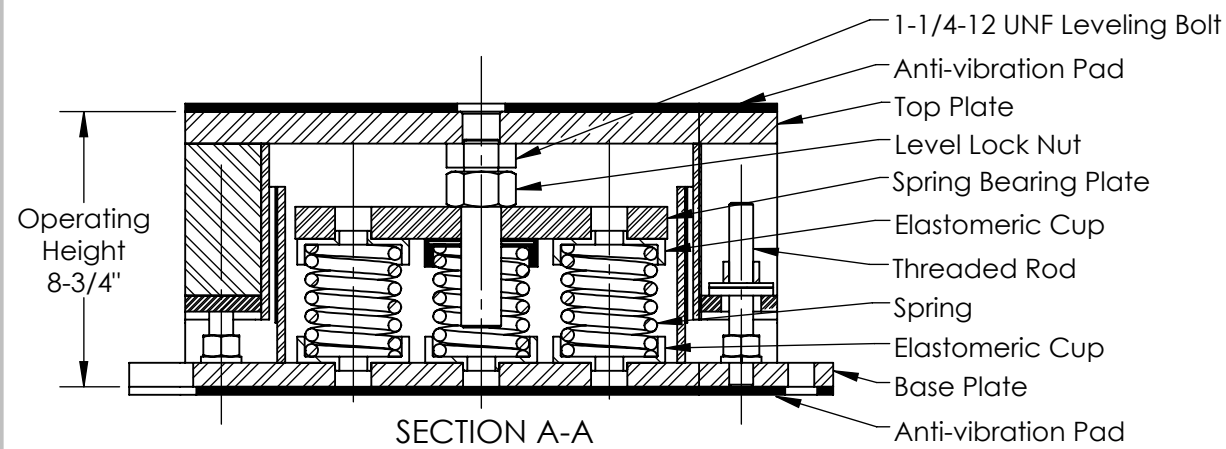
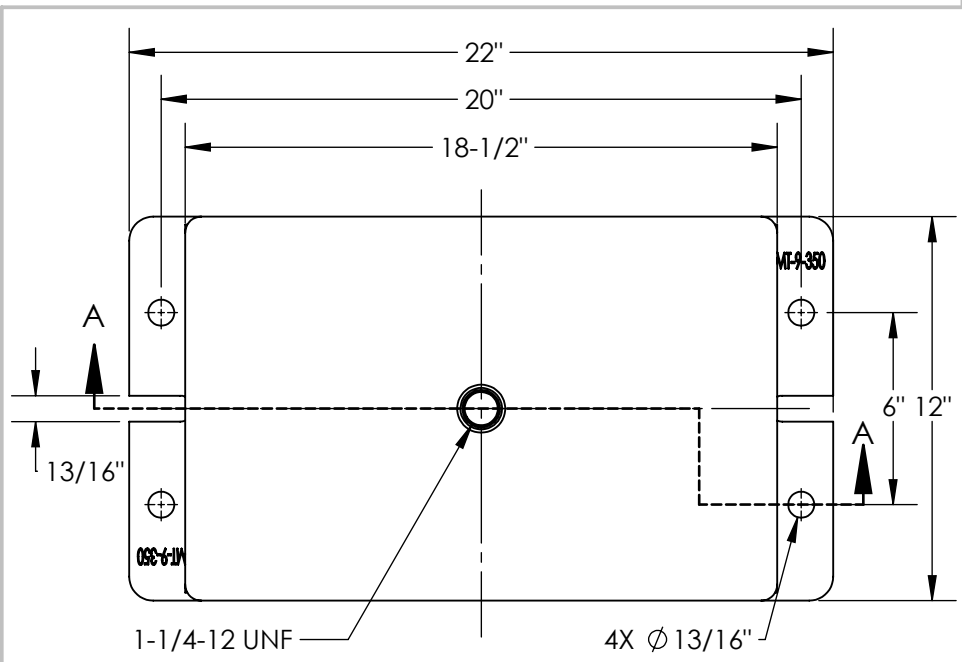


2

1



Isolator Selections			
Pos 1		Pos 2	
Pos 3		Pos 4	
Pos 5		Pos 6	
Pos 7		Pos 8	
Pos 9		Pos 10	

Model	Rated Load at 1.5" Deflection (lbs)	Spring Rate (lbs/in)	Spring Color
SRMF-9-352	1,260	840	Yellow
SRMF-9-354	2,250	1,500	Purple
SRMF-9-354-142	3,465	2,310	Purple/Blue
SRMF-9-356	5,670	3,780	Black
SRMF-9-356-142	6,885	4,590	Black/Blue
SRMF-9-356-175	7,695	5,130	Black/Brown
SRMF-9-356-176	8,370	5,580	Black/Black
SRMF-9-356-144	9,270	6,180	Black/Brown
SRMF-9-356-146	13,320	8,880	Black/Yellow
SRMF-9-356-148	19,170	12,780	Black/Green

Model	Rated Load at 2" Deflection (lbs)	Spring Rate (lbs/in)	Spring Color
SRMF-9-350	720	360	Red
SRMF-9-350-140	1,440	720	Red/Black
SRMF-9-403	3,132	1,566	Black
SRMF-9-404	4,077	2,039	Blue
SRMF-9-405	5,310	2,655	Red
SRMF-9-406	6,084	3,042	Orange
SRMF-9-407	7,083	3,542	Green
SRMF-9-408	8,262	4,131	White
SRMF-9-409	9,000	4,500	Brown
SRMF-9-405-150	11,160	5,580	Red/Grey
SRMF-9-407-150	12,933	6,467	Green/Grey
SRMF-9-409-150	14,850	7,425	Brown/Grey

- Notes:**
1. All dimensions are in inches, interpret per ANSI Y14.
 2. Standard finish: Housing - Zinc Bright Plating; Spring - Zinc Bright Plating (Color: see table); Hardware - Zinc-electroplate.
 3. All springs at rated loads have 50% additional travel to solid load.
 4. Safety factor - Springs will accommodate 50% extra load from rated load to solid load.

VibraSystems Inc
 www.vibrasystems.com
 email: info@vibrasystems.com

INSTALLATION INSTRUCTIONS

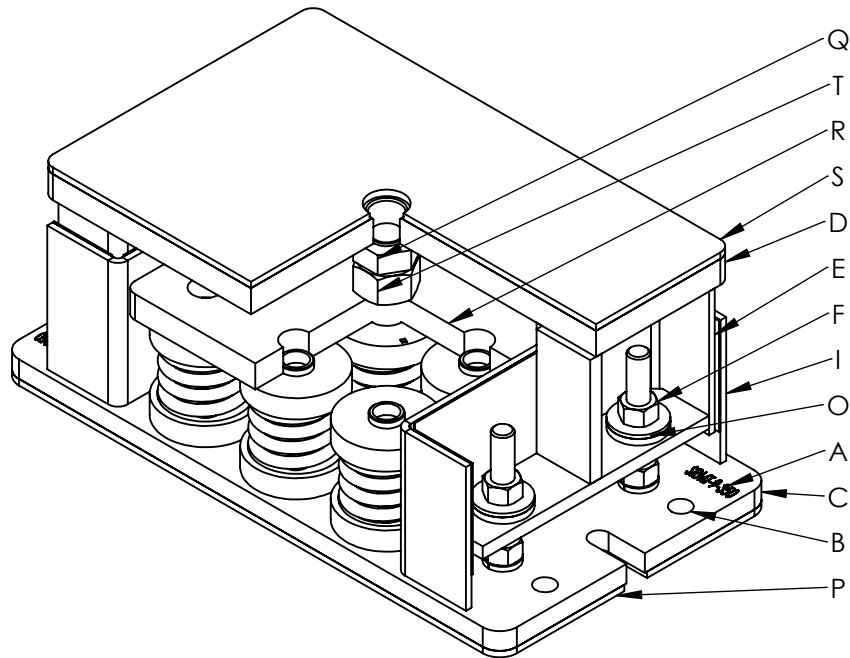
SCALE: None	MODEL: SRMF-9-350	SHEET 1 OF 2	REV A
-------------	-------------------	--------------	-------

2

1

1. Check each isolator's model number ("A") against the information on the packing slip, before beginning installation.
2. Secure the isolator to the equipment support structure - concrete foundation or metal frame, according to the equipment base's drawings for the locations of the mounting holes ("B").
 - 2.1. If the isolator is installed on a concrete foundation, use sets of seismically rated concrete anchors and follow the general anchor installation instructions with the required torque value on the anchor's nut.
 - 2.2. If the isolator is installed on a metal base, use grade 5 or better hardware to secure the isolator to the support base. Welding to steel base is permitted provided the weld achieves the required strength. Remove the rubber pad ("P") before welding.
 - 2.3. Vibrasystems Inc. recommends that all the isolators are installed on a level surface.

3. Use a forklift, crane or any other certified lifting machine to raise the equipment to be installed. Slowly lower the equipment on top of the isolators and make sure that the equipment's base is perfectly aligned with the isolator's top plate ("D").
4. Make sure that the flat tops ("D") of all isolators are properly secured to the equipment's base by bolting or welding the isolator's flat top plates ("D") to the equipment's base. Welding to steel base is permitted provided the weld achieves the required strength. Remove the rubber pad ("S") before welding.
5. When the equipment, which must be at the full operating weight, is placed onto the isolator, the isolator's spring will be compressed under the load according to the Load VS. Deflection chart for this isolator model. The inside channels ("E") will slide down along the outside channels ("I") of the isolator's base ("C") under the weight of the equipment.
6. Level each isolator in sequence by turning the leveling bolt ("Q") a full counterclockwise turn at a time. Repeat this procedure on all isolators, one at a time. After the leveling is done, run down the level lock nut ("T") to lock the leveled position by tightening it to the spring bearing plate ("R").
7. Adjust the nuts ("F") to allow a free movement of the installed equipment at all mounting points, with an allowed gap of 1/4".
8. Installation is complete.



VibraSystems Inc
 www.vibrasystems.com
 email: info@vibrasystems.com

INSTALLATION INSTRUCTIONS

SCALE:	MODEL:	REV	
None	SRMF-9-350	A	
SHEET 2 OF 2			