

1", 2", & 3" DEFLECTION SEISMIC RESTRAINED CERTIFIED SPRING MOUNT/SNUBBER

The models **SRMT-2** (top levelling bolt) and **SRMF-2** (flat top with built-in levelling feature) are heavy-duty Seismic Restrained Certified Spring Mounts - Snubbers Combination. The uniquely innovative design incorporates interlocking top and bottom steel channels, which restrict the movement (snubbers effect) in all horizontal directions under lateral forces. Rubber lining inside bottom metal channels prevents metal-to-metal contact. **Vibrasystems Inc. isolators are tested and certified to ASHRAE 171-2017 for wind and seismic load resistance.**

Recommended for:

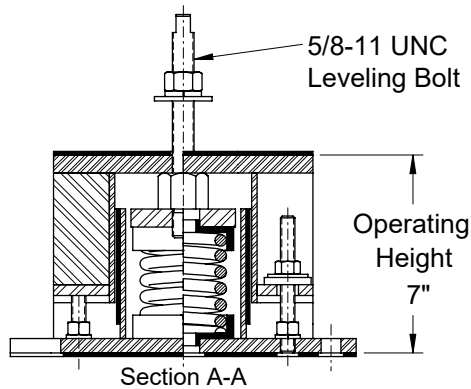
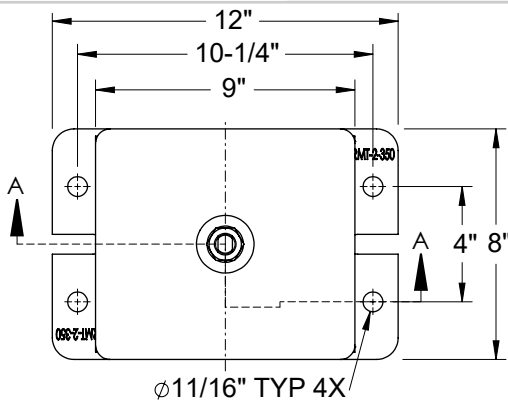
HVAC equipment, engine-generators (gensets), fan air circulation systems, compressors, pumps, chillers, AC units, cooling towers, inertia bases, etc.



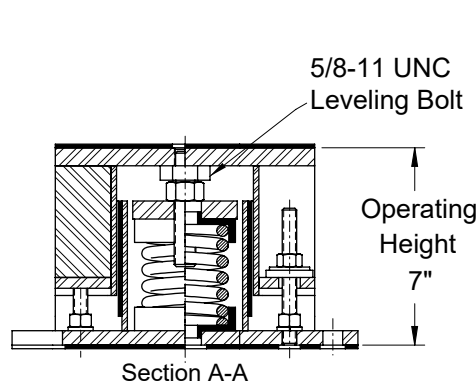
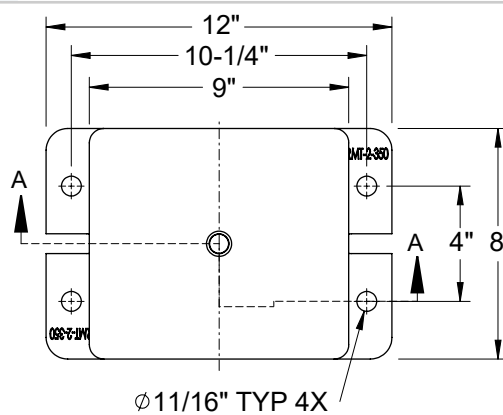
SRMF-2



SRMT-2



SRMT-2 (Top bolt): Overall dimensions



SRMF-2 (Flat top): Overall dimensions

Tested & Certified to:
ASHRAE 171-2017
Wind & Seismic
Load Resistance

TRU
COMPLIANCE

LISTED

1701502-CR-001

Manufactured by:
Vv VibraSystems Inc.

Features:

- ✓ Safety Factor: Springs will accommodate an additional 50% load from the rated load to the solid load.
- ✓ All spring mounts' elements are safe at solid load.
- ✓ Interlocking steel channels restrict the movements (snubbers) in all horizontal directions.
- ✓ Rubber lining inside metal channels prevents metal-to-metal contact.
- ✓ Zinc-plating housing and powder-coating springs provide excellent corrosion resistance.
- ✓ Acoustic elastomer spring cups provide superior vibration isolation and noise reduction.
- ✓ Springs are color-coded and easily replaceable.
- ✓ Now tested and certified to: **ASHRAE 171-2017 for wind and seismic load resistance.**

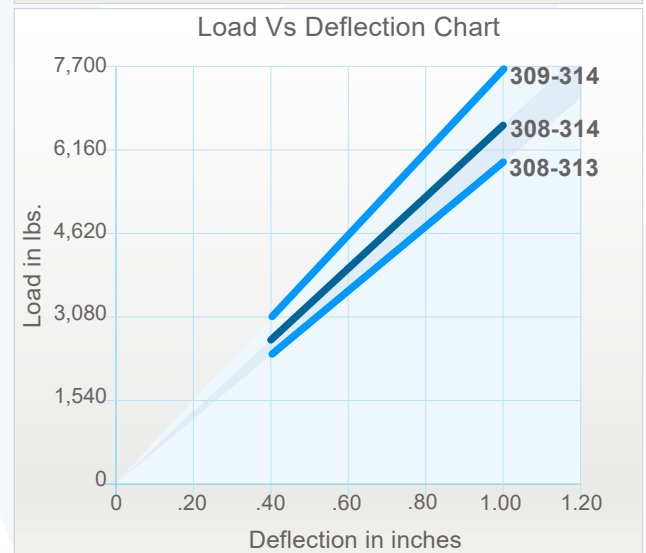
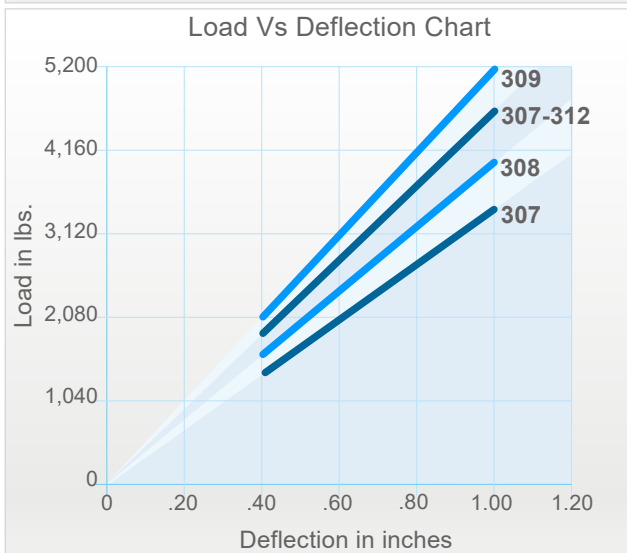
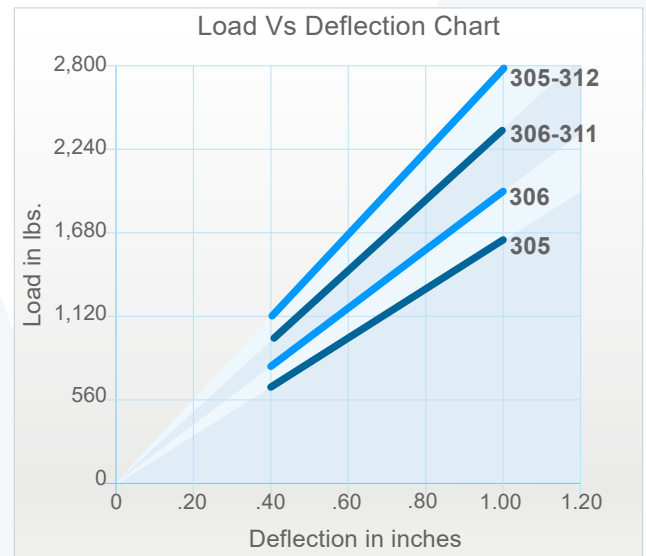
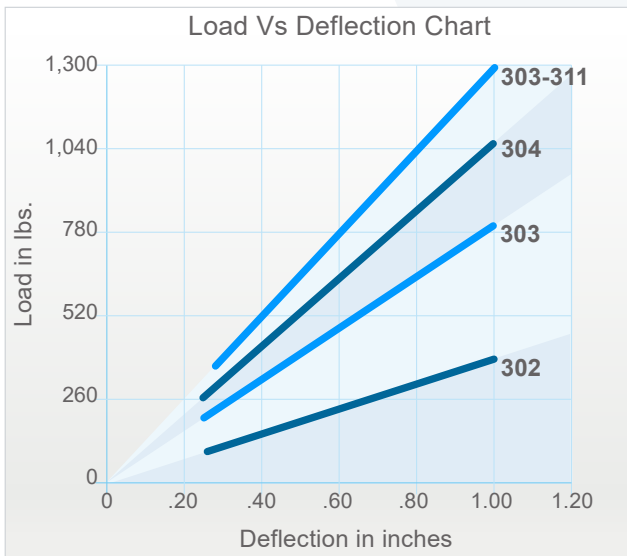
Tested & Certified to:
ANSI/ASHRAE 171-2017

Wind & Seismic Maximum Vertical Load Resistance: 17,690 lbs
Wind & Seismic Maximum Horizontal Load Resistance: 5,940 lbs

1" DEFLECTION SEISMIC RESTRAINED CERTIFIED SPRING MOUNT/SNUBBER

Model	Rated Load (lbs)	Deflection at Rated Load (lin)	Spring Rate (lbs/in)	Spring Color	Ship. Weight (lbs)
SRM-2-302	390	1	390	Yellow	44
SRM-2-303	800	1	800	Orange	44
SRM-2-304	1,060	1	1,060	Red	44
SRM-2-303-311	1,300	1	1,300	Orange/Green	45
SRM-2-305	1,650	1	1,650	White	44
SRM-2-306	2,000	1	2,000	Brown	44
SRM-2-306-311	2,400	1	2,400	Brown/Green	45
SRM-2-305-312	2,800	1	2,800	White/Yellow	45
SRM-2-307	3,400	1	3,400	Green	44
SRM-2-308	4,000	1	4,000	Black	44
SRM-2-307-312	4,660	1	4,660	Green/Yellow	45
SRM-2-309	5,200	1	5,200	Blue	44
SRM-2-308-313	5,980	1	5,980	Black/Orange	45
SRM-2-308-314	6,500	1	6,500	Black/Grey	45
SRM-2-309-314	7,700	1	7,700	Blue/Grey	45

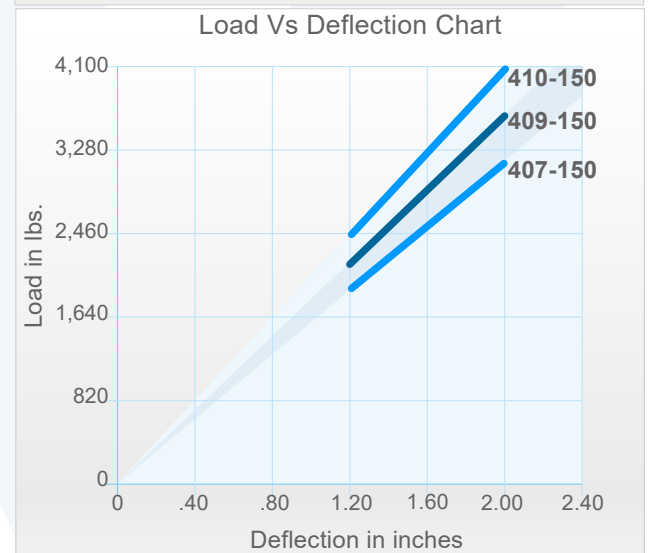
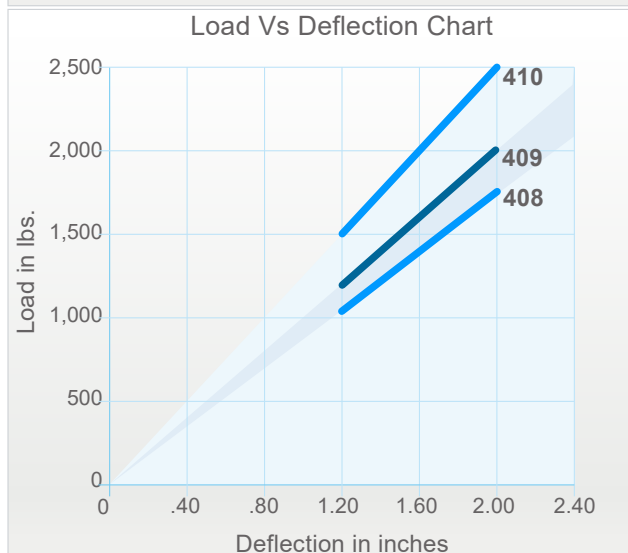
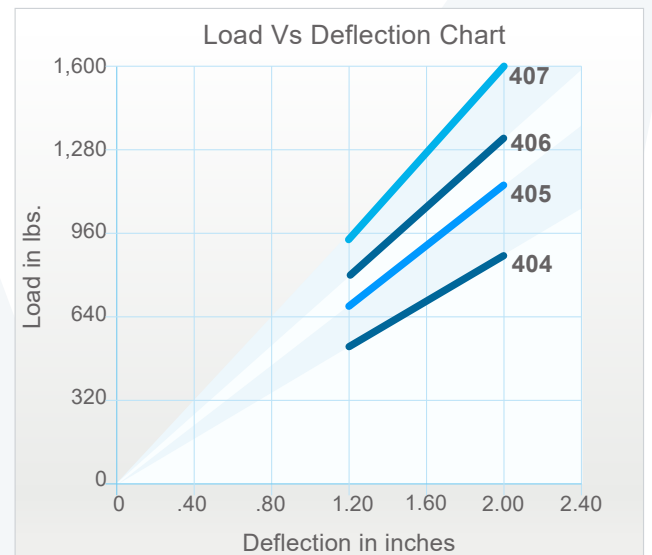
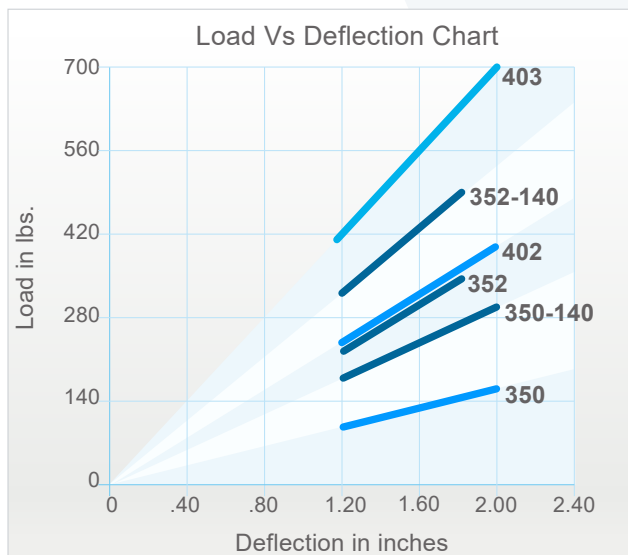
Models are available in two configurations: SRMF-2 (flat top), and SRMT-2 (top bolt).



2" DEFLECTION SEISMIC RESTRAINED CERTIFIED SPRING MOUNT/SNUBBER

Model	Rated Load (lbs)	Deflection at Rated Load (lin)	Spring Rate (lbs/in)	Spring Color	Ship. Weight (lbs)
SRM-2-350	160	2	80	Plated	45
SRM-2-350-140	300	2	150	Plated/Plated	46
SRM-2-352	360	1.8	200	Plated	45
SRM-2-402	400	2	200	Grey	45
SRM-2-352-140	500	1.8	277	Plated/Plated	46
SRM-2-403	696	2	348	Black	45
SRM-2-404	906	2	453	Blue	45
SRM-2-405	1,180	2	590	Red	45
SRM-2-406	1,352	2	676	Orange	45
SRM-2-407	1,574	2	787	Green	45
SRM-2-408	1,836	2	918	White	46
SRM-2-409	2,000	2	1,000	Brown	46
SRM-2-410	2,500	2	1,250	Yellow	46
SRM-2-407-150	3,174	2	1,587	Green/Grey	47
SRM-2-409-150	3,600	2	1,800	Brown/Grey	47
SRM-2-410-150	4,100	2	2,050	Yellow/Grey	47

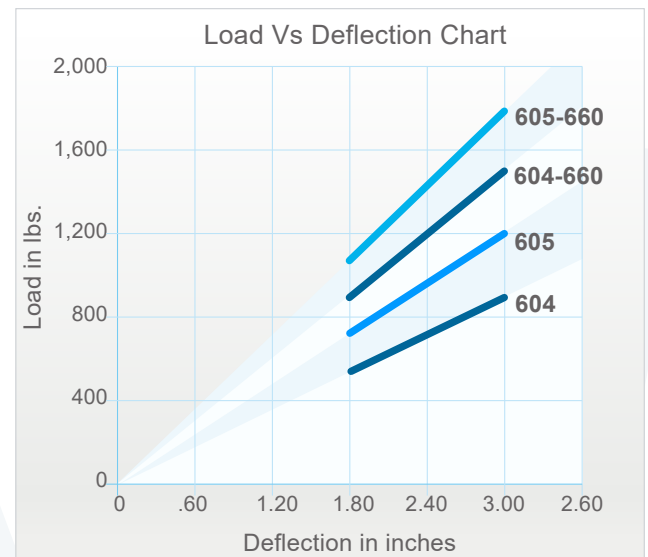
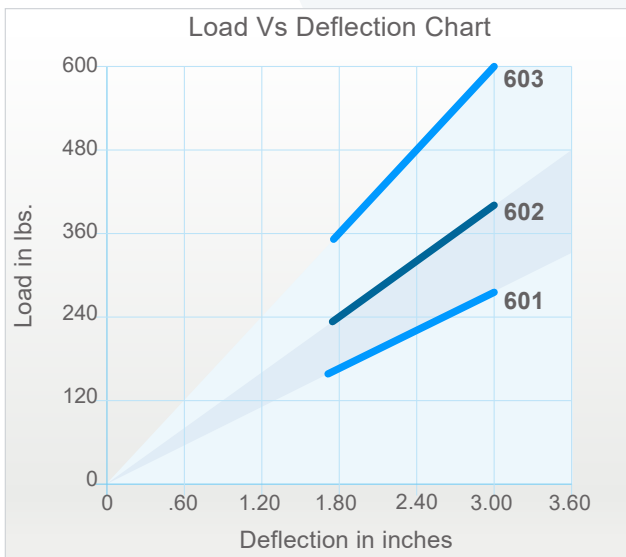
Models are available in two configurations: SRMF-2 (flat top), and SRMT-2 (top bolt).



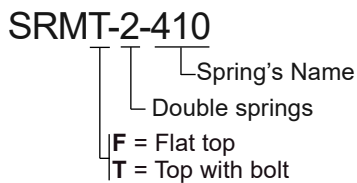
3" DEFLECTION SEISMIC RESTRAINED CERTIFIED SPRING MOUNT/SNUBBER

Model	Rated Load (lbs)	Deflection at Rated Load (lin)	Spring Rate (lbs/in)	Spring Color	Ship. Weight (lbs)
SRM-2-601	280	3	93.3	Blue	46
SRM-2-602	400	3	133.3	Yellow	46
SRM-2-603	600	3	200	Orange	46
SRM-2-604	900	3	300	Red	46
SRM-2-605	1,200	3	400	Green	46
SRM-2-604-660	1,500	3	500	Red/Grey	48
SRM-2-605-660	1,800	3	600	Green/Grey	48

Models are available in two configurations: SRMF-2 (flat top), and SRMT-2 (top bolt).



Model nomenclature:



Notes:

- a) Vibrasystems isolators are tested and certified to ASHRAE 171-2017 for wind and seismic load resistance. Wind and Seismic Certification Compliance Report 1701502-CR-001-R1 is available upon request.
- b) 300 Spring: 3" Outside diameter x 4.75" Free Length.
- c) 310 Spring: 1.75" Outside diameter x 4.75" Free Length.
- d) 400 Spring: 3" Outside diameter x 5.75" Free Length.
- e) 150 Spring: 2" Outside diameter x 5.75" Free Length.
- f) 600 Spring: 3" Outside diameter x 6.75" Free Length
- g) 660 Spring: 2" Outside diameter x 6.75" Free Length
- h) Rated load is the maximum load recommended.