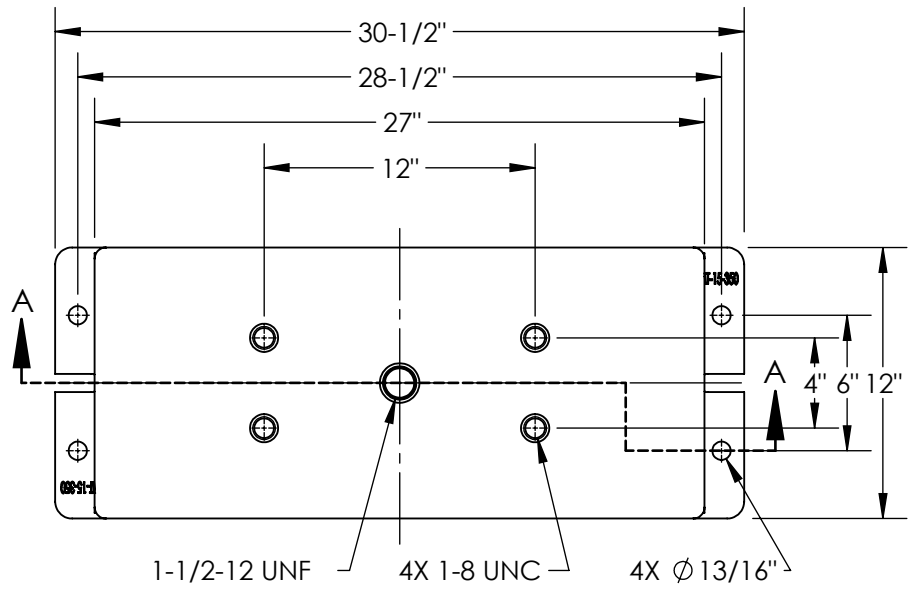


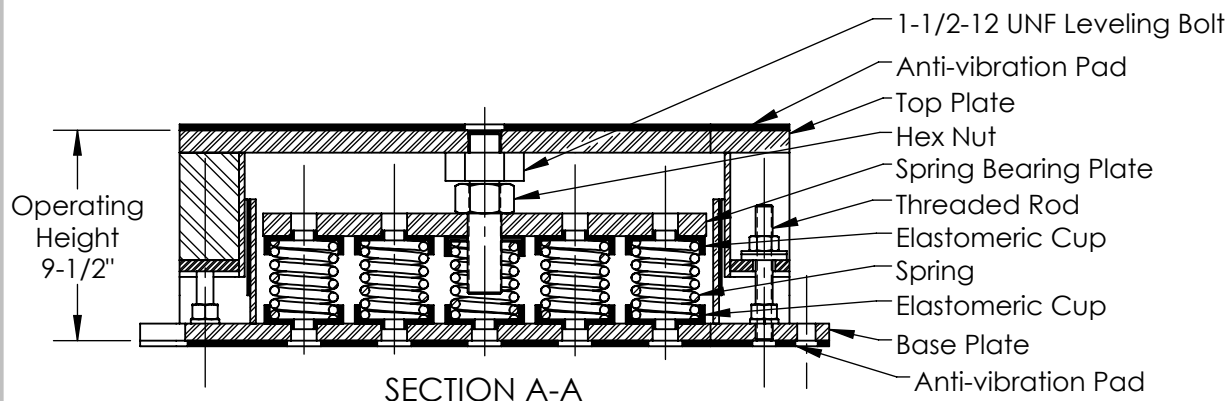
2

1



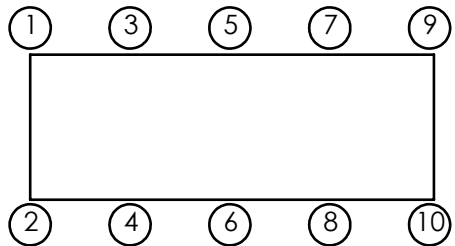
B

B



A

A



2

1

Model	Rated Load (lbs)	Deflec. @ Rated Load (in)	Spring Rate (lbs/in)	Spring Color
SRMF-15-352	2,100	1.5	1,400	Yellow
SRMF-15-354	3,750	1.5	2,500	Purple
SRMF-15-354-142	5,775	1.5	3,850	Purple/Blue
SRMF-15-356	6,750	1.5	4,500	Black
SRMF-15-356-142	8,775	1.5	5,850	Black/Blue
SRMF-15-356-176	11,250	1.5	7,500	Black/Black
SRMF-15-356-144	12,750	1.5	8,500	Black/Brown
SRMF-15-356-146	19,500	1.5	13,000	Black/Yellow
SRMF-15-356-148	23,625	1.25	18,900	Black/Green

Model	Rated Load (lbs)	Deflec. @ Rated Load (in)	Spring Rate (lbs/in)	Spring Color
SRMF-15-350	1,200	2	600	Red
SRMF-15-350-140	2,400	2	1,200	Red/Black
SRMF-15-403	5,220	2	2,610	Black
SRMF-15-404	6,795	2	3,398	Blue
SRMF-15-405	8,850	2	4,425	Red
SRMF-15-406	10,140	2	5,070	Orange
SRMF-15-407	11,805	2	5,903	Green
SRMF-15-408	13,770	2	6,885	White
SRMF-15-409	15,000	2	7,500	Brown
SRMF-15-410	18,750	2	9,375	White
SRMF-15-407-150	21,555	2	10,778	Green/Grey
SRMF-15-409-150	24,750	2	12,375	Brown/Grey
SRMF-15-410-150	28,500	2	14,250	White/Grey

Notes:

- Standard finish: Housing - Zinc Bright Plating; Spring - Zinc Bright Plating (Color: see table); Hardware - Zinc-electroplate.
- Safety factor - All Springs will accommodate 50% extra load from rated load to solid load.

Isolator Selections			
Pos 1		Pos 2	
Pos 3		Pos 4	
Pos 5		Pos 6	
Pos 7		Pos 8	
Pos 9		Pos 10	

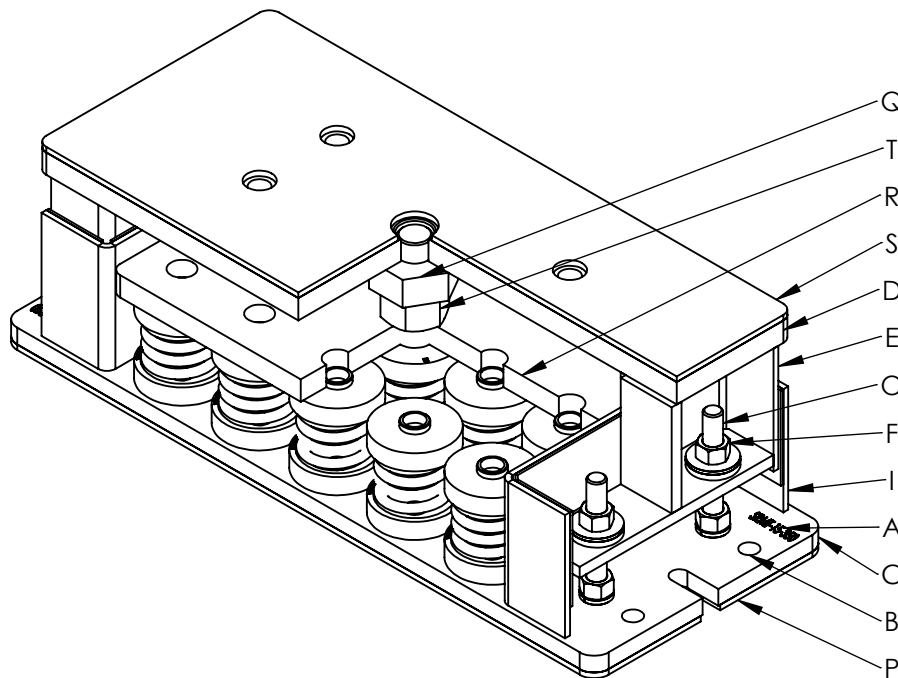
VibraSystems Inc
 www.vibrasystems.com
 email: info@vibrasystems.com

INSTALLATION INSTRUCTIONS

SCALE: None	MODEL: SRMF-15-350	SHEET 1 OF 2	REV A
-------------	--------------------	--------------	-------

1. Check each isolator's model number ("A") against the information on the packing slip, before beginning installation.
2. Secure the isolator to the equipment support structure - concrete foundation or metal frame, according to the equipment base's drawings for the locations of the mounting holes ("B").
 - 2.1. If the isolator is installed on a concrete foundation, use sets of seismically rated concrete anchors and follow the general anchor installation instructions with the required torque value on the anchor's nut.
 - 2.2. If the isolator is installed on a metal base, use grade 5 or better hardware to secure the isolator to the support base. Welding to steel base is permitted provided the weld achieves the required strength. Remove the rubber pad ("P") before welding.
 - 2.3. Vibrasystems Inc. recommends that all the isolators are installed on a level surface.

3. Use a forklift, crane or any other certified lifting machine to raise the equipment to be installed. Slowly lower the equipment on top of the isolators and make sure that the equipment's base is perfectly aligned with the isolator's top plate ("D").
4. Make sure that the flat tops ("D") of all isolators are properly secured to the equipment's base by bolting or welding the isolator's flat top plates ("D") to the equipment's base. Welding to steel base is permitted provided the weld achieves the required strength. Remove the rubber pad ("S") before welding.
5. When the equipment, which must be at the full operating weight, is placed onto the isolator, the isolator's spring will be compressed under the load according to the Load VS. Deflection chart for this isolator model. The inside channels ("E") will slide down along the outside channels ("I") of the isolator's base ("C") under the weight of the equipment.
6. Level each isolator in sequence by turning the leveling bolt ("Q") a full counterclockwise turn at a time. Repeat this procedure on all isolators, one at a time. After the leveling is done, run down the hex nut ("T") to lock the leveled position by tightening it to the spring bearing plate ("R").
7. Adjust the nuts ("F") to the height of the leveled position.
8. Installation is complete.



VibraSystems Inc			
www.vibrasystems.com email: info@vibrasystems.com			
INSTALLATION INSTRUCTIONS			
SCALE:	MODEL:		REV
None	SRMF-15-350	SHEET 2 OF 2	A