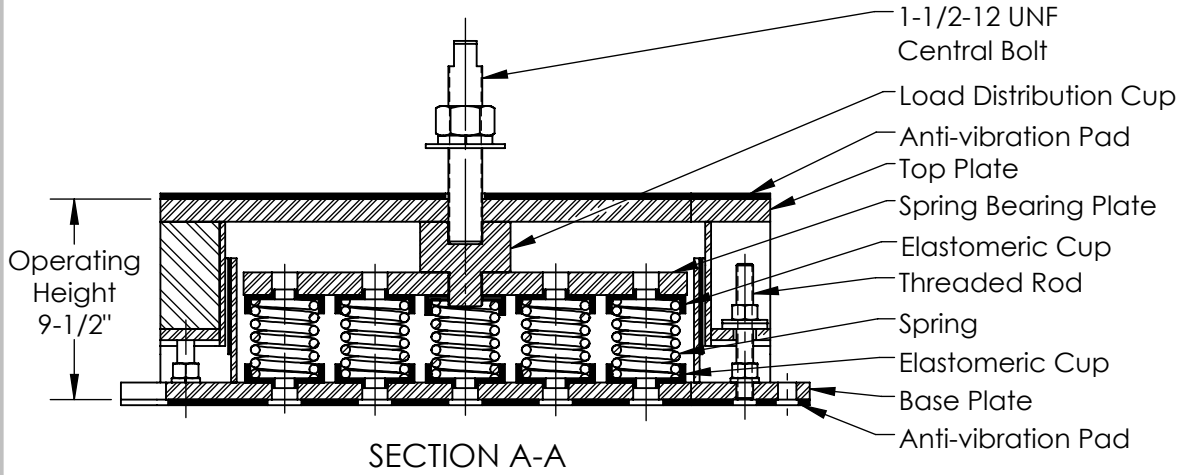
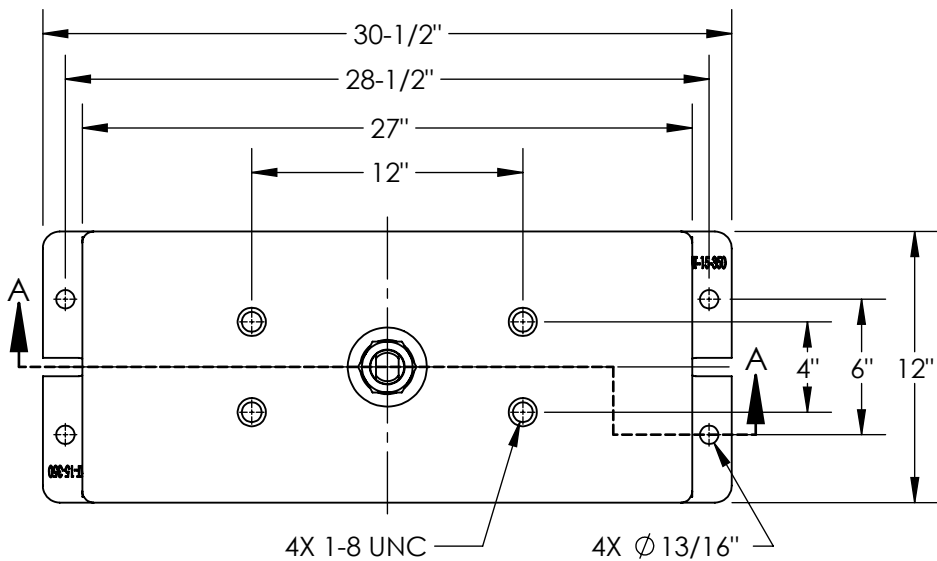


2

1

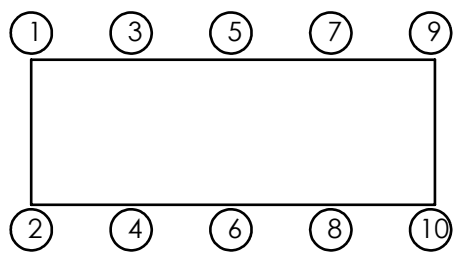
B

B



A

A



2

1

Model	Rated Load (lbs)	Deflec. @ Rated Load (in)	Spring Rate (lbs/in)	Spring Color
SRMT-15-352	2,100	1.5	1,400	Yellow
SRMT-15-354	3,750	1.5	2,500	Purple
SRMT-15-354-142	5,775	1.5	3,850	Purple/Blue
SRMT-15-356	6,750	1.5	4,500	Black
SRMT-15-356-142	8,775	1.5	5,850	Black/Blue
SRMT-15-356-176	11,250	1.5	7,500	Black/Black
SRMT-15-356-144	12,750	1.5	8,500	Black/Brown
SRMT-15-356-146	19,500	1.5	13,000	Black/Yellow
SRMT-15-356-148	23,625	1.25	18,900	Black/Green

Model	Rated Load (lbs)	Deflec. @ Rated Load (in)	Spring Rate (lbs/in)	Spring Color
SRMT-15-350	1,200	2	600	Red
SRMT-15-350-140	2,400	2	1,200	Red/Black
SRMT-15-403	5,220	2	2,610	Black
SRMT-15-404	6,795	2	3,398	Blue
SRMT-15-405	8,850	2	4,425	Red
SRMT-15-406	10,140	2	5,070	Orange
SRMT-15-407	11,805	2	5,903	Green
SRMT-15-408	13,770	2	6,885	White
SRMT-15-409	15,000	2	7,500	Brown
SRMT-15-410	18,750	2	1,250	White
SRMT-15-407-150	21,555	2	10,778	Green/Grey
SRMT-15-409-150	24,750	2	12,375	Brown/Grey
SRMT-15-410-150	28,500	2	14,250	White/Grey

Notes:

- Standard finish: Housing - Zinc Bright Plating; Spring - Zinc Bright Plating (Color: see table); Hardware - Zinc-electroplate.
- Safety factor - Springs will accommodate 50% extra load from rated load to solid load.

Isolator Selections			
Pos 1		Pos 2	
Pos 3		Pos 4	
Pos 5		Pos 6	
Pos 7		Pos 8	
Pos 9		Pos 10	

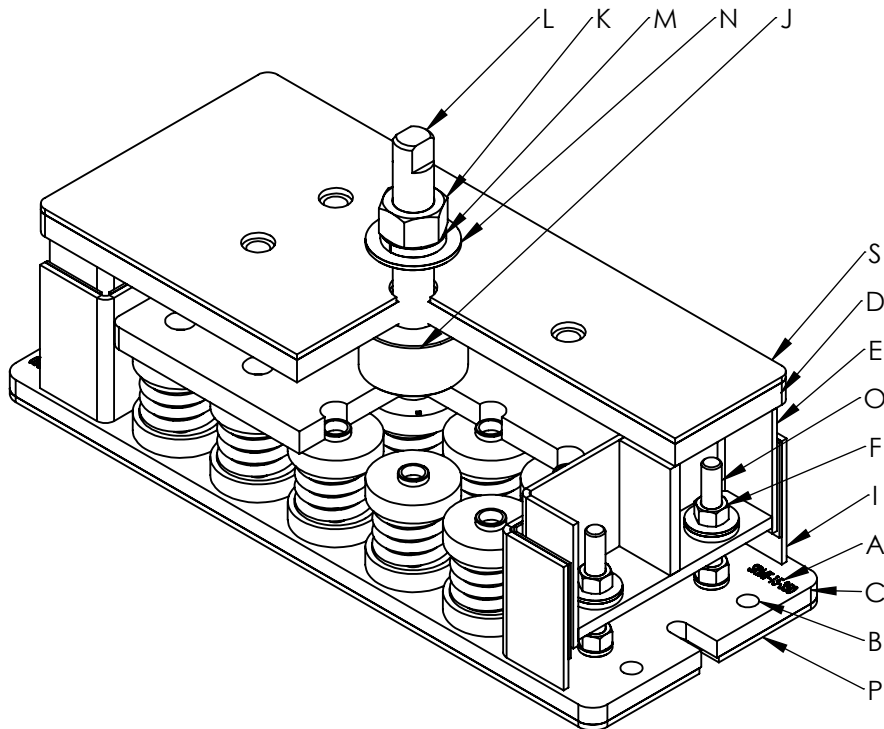
VibraSystems Inc
www.vibrasystems.com
email: info@vibrasystems.com

INSTALLATION INSTRUCTIONS

SCALE: None	MODEL: SRMT-15-350	SHEET 1 OF 2	REV A
-------------	--------------------	--------------	-------

1. Check each isolator's model number ("A") against the information on the packing slip, before beginning installation.
2. Secure the isolator to the equipment support structure - concrete foundation or metal frame, according to the equipment base's drawings for the locations of the mounting holes ("B").
 - 2.1. If the isolator is installed on a concrete foundation, use sets of seismically rated concrete anchors and follow the general anchor installation instructions with the required torque value on the anchor's nut.
 - 2.2. If the isolator is installed on a metal base, use grade 5 or better hardware to secure the isolator to the support base. Welding to steel base is permitted provided the weld achieves the required strength. Remove the rubber pad ("P") before welding.
 - 2.3. Vibrasystems Inc. recommends that all the isolators are installed on a level surface.

3. Use a forklift, crane or any other certified lifting machine to raise the equipment to be installed. Slowly lower the equipment on top of the isolators and make sure that equipment base's holes perfectly aligned with the threaded hole on the isolator's top plate ("D").
4. Make sure that the isolator's central bolt ("L") properly fit through the holes in the base of the equipment and into the threaded hole on the isolator's top plates ("D"). Central bolt must have a flat washer ("N"), a spring washer ("M"), and a hexagon nut ("K"). Welding to steel base is permitted provided the weld achieves the required strength. Remove the rubber pad ("S") before welding.
5. When the equipment, which must be at the full operating weight, is placed onto the isolators, the isolator's spring will be compressed under the load according to the Load VS. Deflection chart for this isolator model. The inside channels ("E") will slide down along the outside channels ("I") of the isolator's base ("C") under the weight of the equipment.
6. Turn the central bolt ("L") clockwise until it touches the bottom of the load distribution cup ("J").
7. Level each isolator in sequence by turning adjusting bolt ("L") a full clockwise turn at a time. Repeat this procedure on all isolators, one at a time. After the leveling is done, run down the lock nut ("K"), the spring washer ("M") and the flat washer ("N") to secure the equipment to the isolator's top plate ("D").
8. Adjust the nuts ("F") to allow a free movement of the installed equipment at all mounting points, with an allowed gap of 1/4".
9. Installation is complete.



VibraSystems Inc			
www.vibrasystems.com			
email: info@vibrasystems.com			
INSTALLATION INSTRUCTIONS			
SCALE:	MODEL:	SHEET 2 OF 2	REV
None	SRMT-15-350		A