

1.5" & 2" DEFLECTION SEISMIC RESTRAINED SPRING MOUNTS

SRMT/F series mounts are designed to provide efficient isolation from critical vibrations and all-directional restraint from vertical and horizontal forces, as well as from forces due to seismic activities and high wind loads. SRMF is a flat top model with inside levelling adjustment feature. All loads, deflections and technical data are the same as in SRMT.

Recommended for:

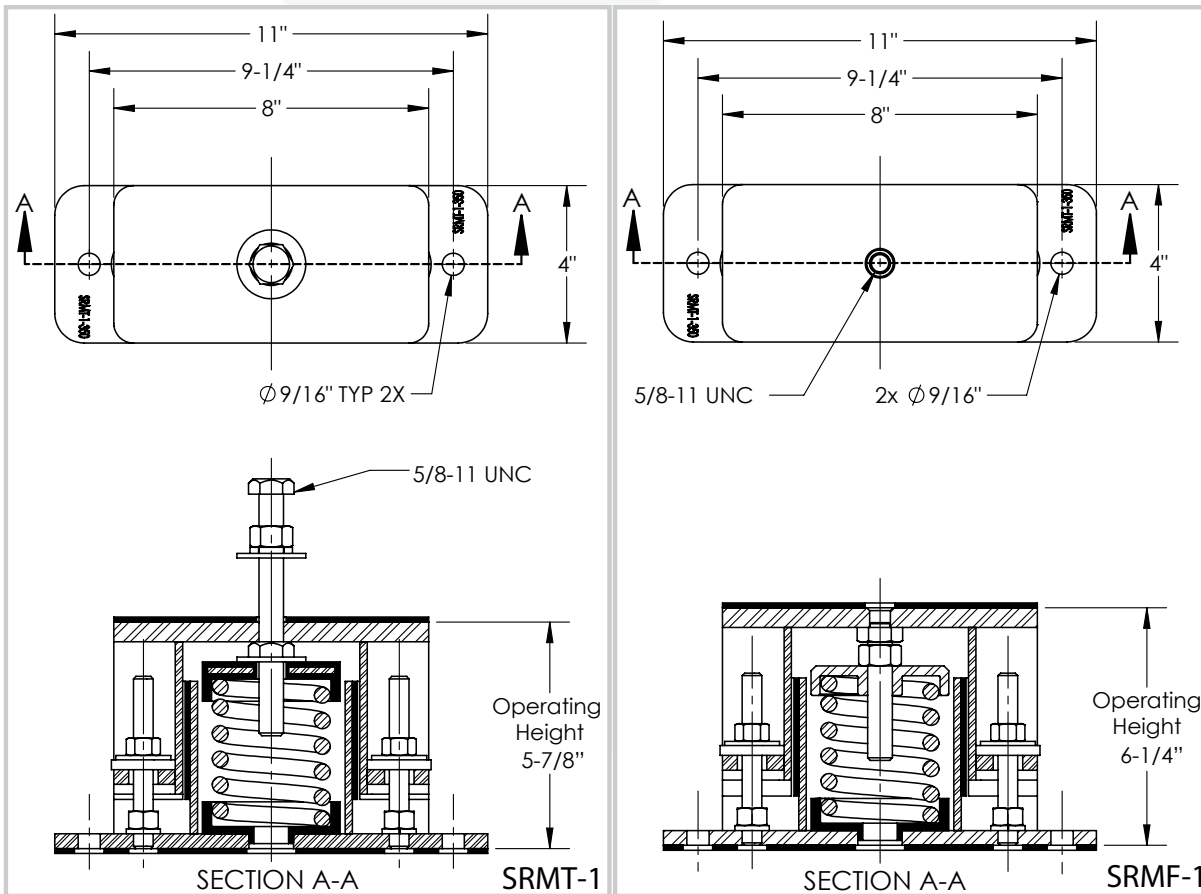
HVAC equipment, fan air circulation systems, compressors, pumps, chillers, AC units, cooling towers, inertia bases, etc.



SRMT-1



SRMF-1

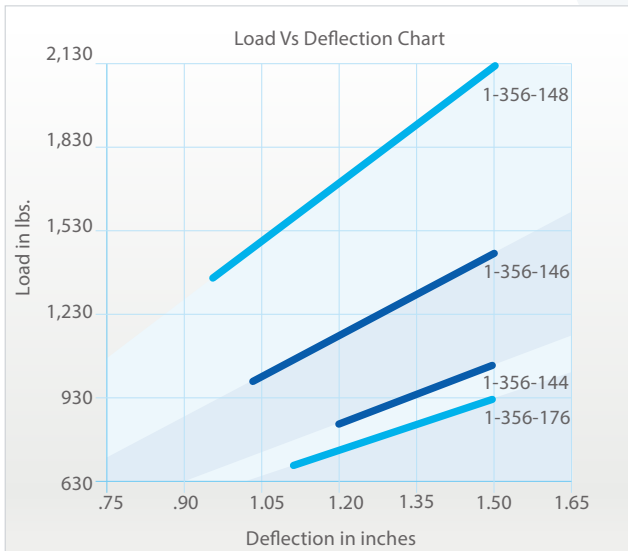
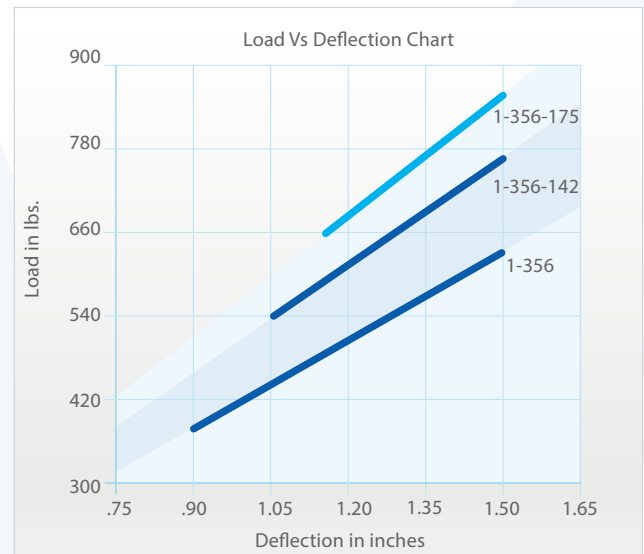
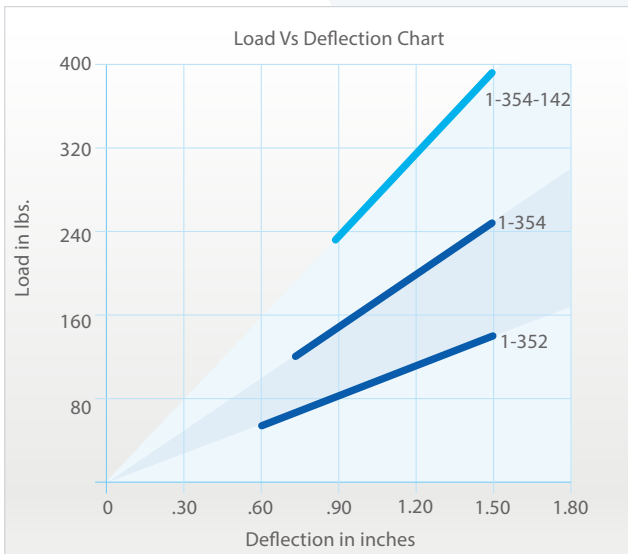


Features:

- ✓ All springs at rated loads have 50% additional travel to solid load.
- ✓ All mounts' elements are safe at solid load.
- ✓ Safety Factor - Springs will accommodate 50% extra load from rated load to solid load. **
- ✓ Recommended load range: from 50% of rated load to rated load.
- ✓ Zinc plates housings and springs provide good corrosion resistance.
- ✓ Elastomer spring base cap provides better vibration isolation, load distribution and noise reduction.
- ✓ Springs are color coded and easily replaceable.
- ✓ Rugged welded steel housing designed to withstand seismic and high wind forces.
- ✓ Anti-skid rubber acoustical pad.

1.5" DEFLECTION SEISMIC RESTRAINED SPRING MOUNTS

Model		Rated Load (lbs)	Deflection at Rated Load (lin)	Spring Rate (lbs/in)	Max. Vertical G Rating	Max. Horiz. G Rating	Spring Color
SRMT-1-352	SRMF-1-352	140	1-1/2	93	125.4	29.3	Yellow
SRMT-1-354	SRMF-1-354	250	1-1/2	166	70.2	16.4	Purple
SRMT-1-354-142	SRMF-1-354-142	385	1-1/2	256	45.6	10.6	Purple/Blue
SRMT-1356	SRMF-1356	630	1-1/2	420	27.9	6.5	Black
SRMT-1-356-142	SRMF-1-356-142	765	1-1/2	510	22.9	5.4	Black/Blue
SRMT-1-356-175	SRMF-1-356-175	855	1-1/2	570	20.5	4.8	Black/Brown
SRMT-1-356-176	SRMF-1-356-176	930	1-1/2	620	18.9	4.4	Black/Black
SRMT-1-356-144	SRMF-1-356-144	1,030	1-1/2	687	17	4	Black/Brown
SRMT-1-356-146	SRMF-1-356-146	1,480	1-1/2	988	11.9	2.8	Black/Yellow
SRMT-1-356-148	SRMF-1-356-148	2,130	1-1/2	1,420	8.2	1.9	Black/Green



Notes:

- a) 350 Spring: 3" Outside diameter x 5" Free Length.
- b) 140 Spring & 170 Spring: 2" Outside diameter x 5" Free Length.
- c) 400 Spring: 3" Outside diameter x 5.75" Free Length.
- d) 150 Spring: 2" Outside diameter x 5.75" Free Length.
- e) Rated load is the maximum load recommended.

** Spring 148 at rated load has 40% additional travel to solid load.

2" DEFLECTION SEISMIC RESTRAINED SPRING MOUNTS

Model	Rated Load (lbs)	Deflection at Rated Load (in)	Spring Rate (lbs/in)	Max. Vertical G Rating	Max. Horiz. G Rating	Spring Color
SRMT-1-350	80	2	40	219.4	51.2	Red
SRMT-1-350-140	160	2	80	109.7	25.6	Red/Black
SRMT-1-403	348	2	174	50.4	11.8	Black
SRMT-1-404	453	2	226.5	38.7	9	Blue
SRMT-1-405	590	2	295	29.7	6.9	Red
SRMT-1-406	676	2	338	26	6.1	Orange
SRMT-1-407	787	2	393.5	22.3	5.2	Green
SRMT-1-408	918	2	459	19.1	4.5	White
SRMT-1-409	1,000	2	500	17.5	4.1	Brown
SRMT-1-410	1,250	2	625	14	3.3	White
SRMT-1-407-150	1,437	2	718.5	12.2	2.8	Green/Grey
SRMT-1-409-150	1,650	2	825	10.6	2.5	Brown/Grey
SRMT-1-410-150	1,900	2	950	9.2	2.2	White/Grey

