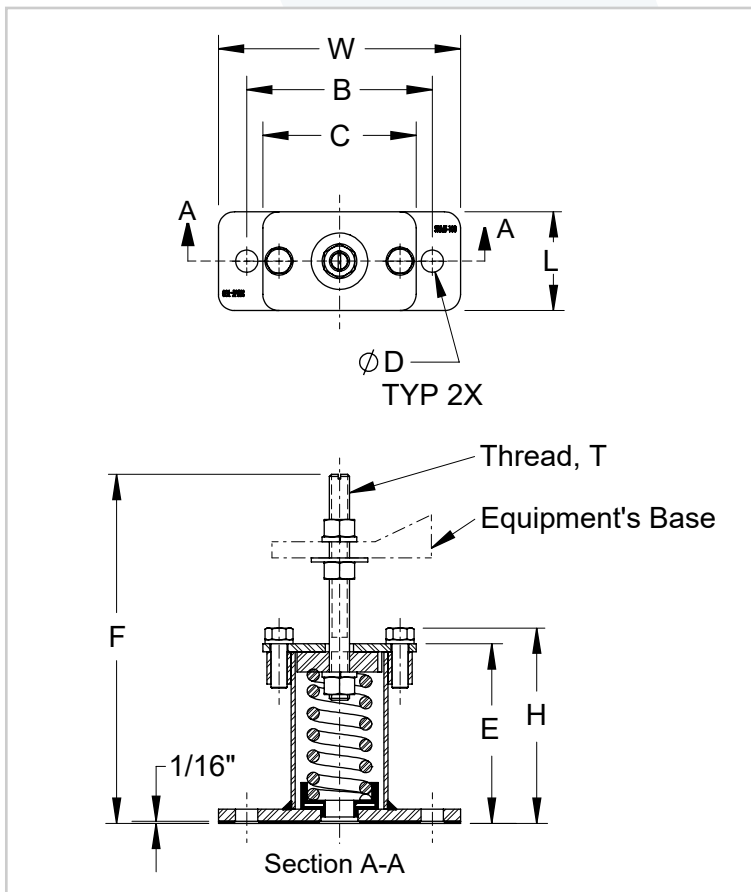


1/2" & 1" DEFLECTION SEISMIC RESTRAINED SPRING MOUNTS

SRMT-020/120 mounts are designed to provide efficient isolation from critical vibrations and all-directional restraint from vertical and horizontal forces, as well as from forces due to seismic activities and high wind loads.

Recommended for:

HVAC equipment, fan air circulation systems, compressors, pumps, chillers, AC units, cooling towers, inertia bases, etc.



Dimensions in inches, (in)	SRMT-20	SRMT-120
W	4-1/2	6-1/2
L	2	3-1/16
B	3-1/2	5
C	3-1/4	4-1/2
D	7/16	9/16
H	2-3/4	4-7/16
E	2-7/16	4-1/16
F	5-1/2	8-5/16
T	3/8-16 UNC	1/2-13 UNC

Features:

- ✓ Safety factor: Springs will accommodate an additional 50% load from the rated load to the solid load.
- ✓ All spring mounts' elements are safe at solid load.
- ✓ Rugged welded steel housing designed to withstand seismic and high wind forces.
- ✓ Recommended load range: from 50% of rated load to rated load.
- ✓ Zinc-plating housing and powder-coating springs provide excellent corrosion resistance.
- ✓ Acoustic elastomer spring cup provides superior vibration isolation and noise reduction.
- ✓ Springs are color-coded and easily replaceable.
- ✓ Anti-skid rubber acoustical pad.

1/2" DEFLECTION SEISMIC RESTRAINED SPRING MOUNTS

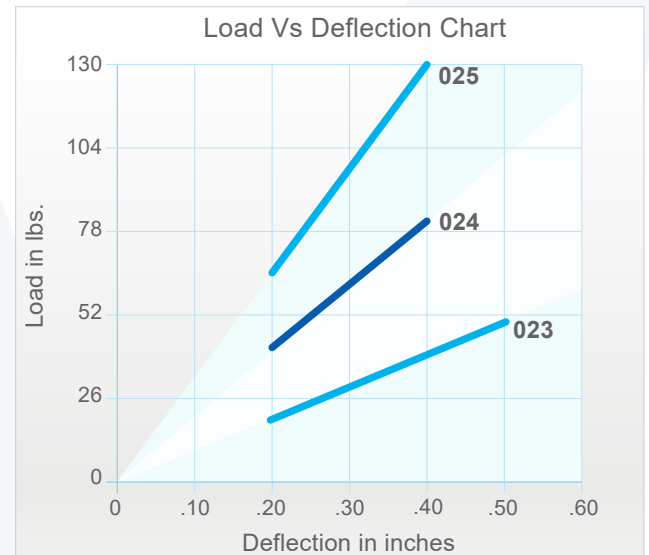
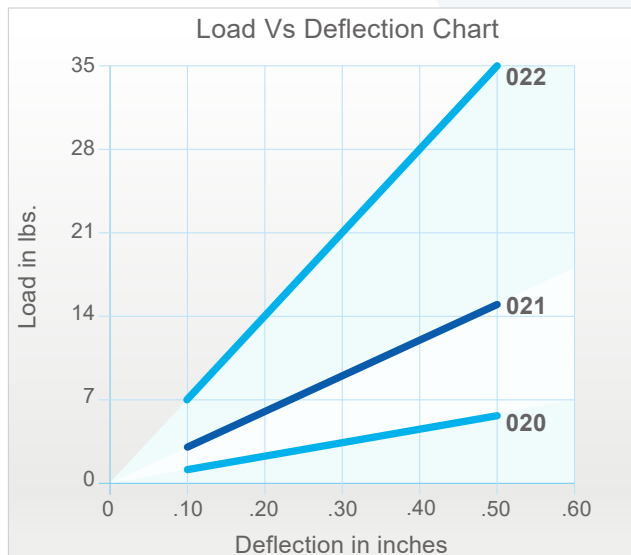
Model	Rated Load (lbs)	Deflection at Rated Load (lin)	Spring Rate (lbs/in)	Spring Color	Ship. Weight (lbs)
SRMT-020	5	.50	10	Black	1.5
SRMT-021	15	.50	30	Blue	1.5
SRMT-022	35	.50	70	Red	1.5
SRMT-023	50	.50	100	Yellow	1.5
SRMT-024	80	.40	200	White	1.5
SRMT-025	130	.40	325	Green	1.5

The load capacities are LRFD (Load and Resistance Factor Design) load level prescribed in American Society of Civil Engineers ASCE 7-10 and listed in the table.

SRMT-020

Max. Horizontal: 325 lbs

Max. Vertical: 500 lbs



Notes:

- a) 020 Spring: 1.25" Outside diameter x 1.50" Free Length.
- b) Rated load is the maximum load recommended.

1" DEFLECTION SEISMIC RESTRAINED SPRING MOUNTS

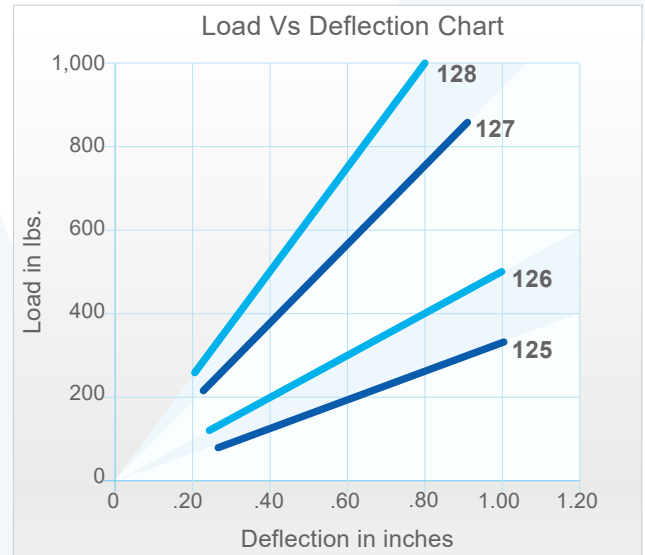
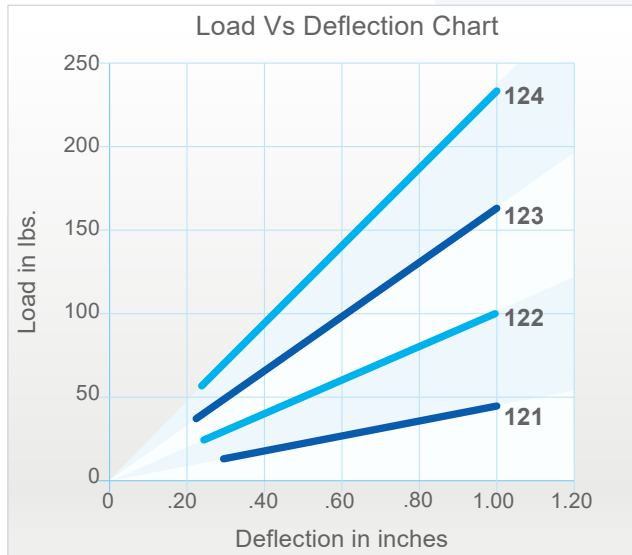
Model	Rated Load (lbs)	Deflection at Rated Load (lin)	Spring Rate (lbs/in)	Spring Color	Ship. Weight (lbs)
SRMT-121	45	1	45	Grey	5.5
SRMT-122	100	1	100	Black	5.5
SRMT-123	165	1	165	Pink	5.5
SRMT-124	235	1	235	Blue	5.5
SRMT-125	335	1	335	Red	5.5
SRMT-126	500	1	500	Brown	5.5
SRMT-127	850	.89	950	Yellow	5.5
SRMT-128	1,000	.80	1,250	Green	5.5

The load capacities are LRFD (Load and Resistance Factor Design) load level prescribed in American Society of Civil Engineers ASCE 7-10 and listed in the table.

SRMT-120

Max. Horizontal: 800 lbs

Max. Vertical: 1,000 lbs



Notes:

- a) 120 Spring: 2" Outside diameter x 3" Free Length.
- b) Rated load is the maximum load recommended.