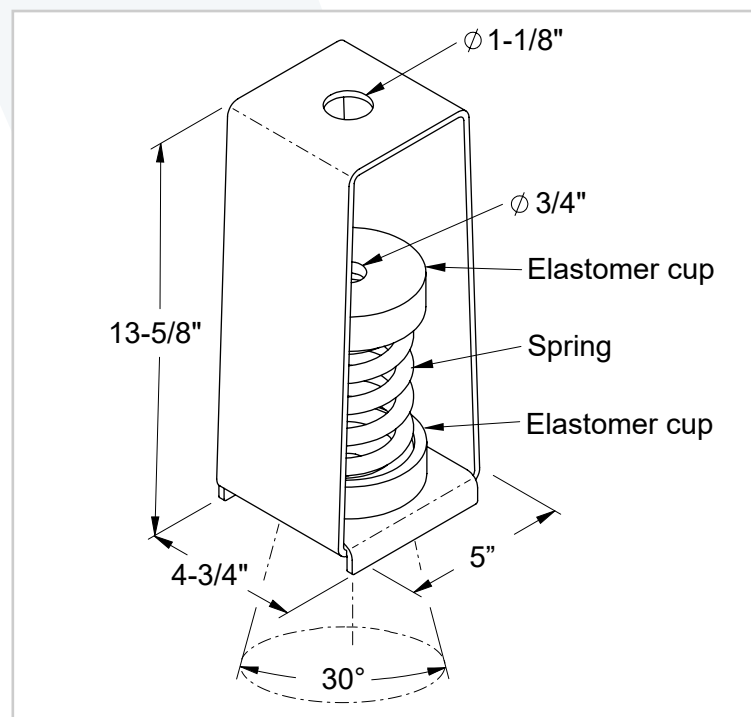


## 2" & 3" DEFLECTIONS SPRING HANGERS

**HD-S** models are heavy-duty hangers featuring a newly designed steel housing with downward-bent sides at the base. This significantly increases the rigidity of the steel frame, preventing the bottom plate from bending under heavy loads. Elastomer top cup has vulcanized steel washer to provide uniform load distribution. The elastomer bottom cup features a projecting bushing that prevents the rod from making contact with the steel frame. The top and bottom elastomer cups effectively minimize the transfer of vibration and noise.

### Recommended for:

Spring hangers are used for fan coil units, air circulation units (VAV), pipes, ducts, and other suspended structures and building services.

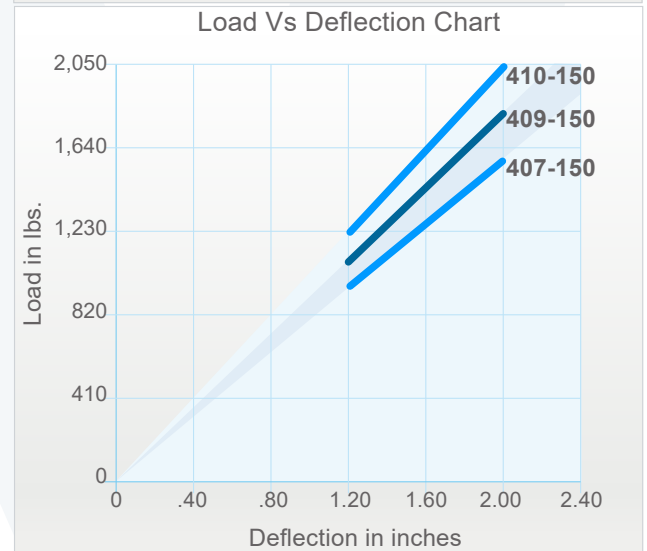
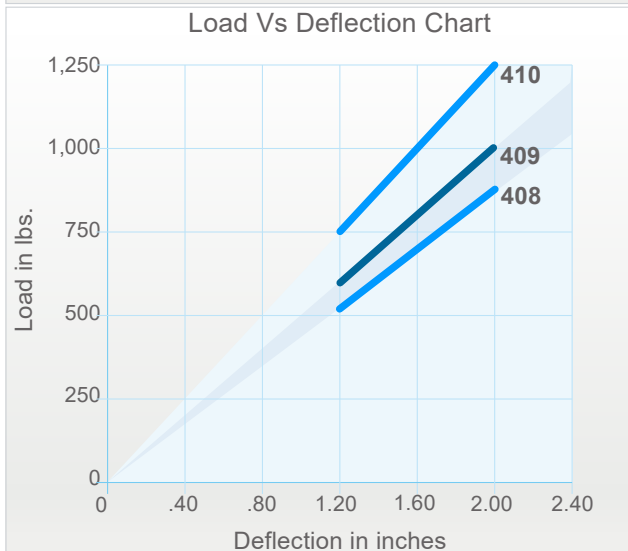
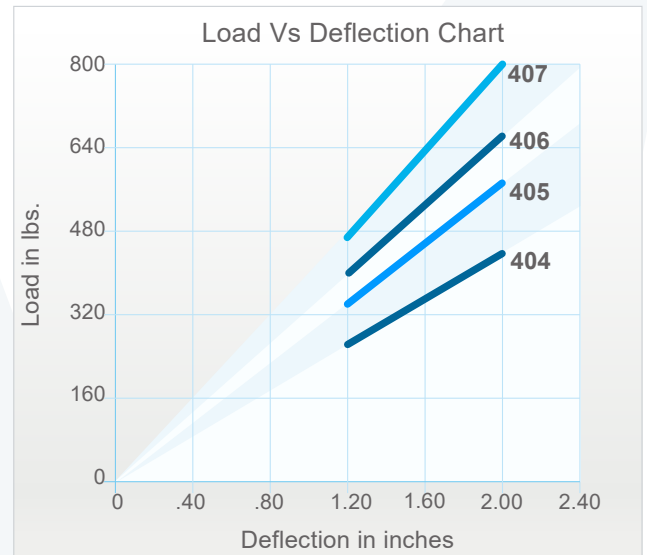
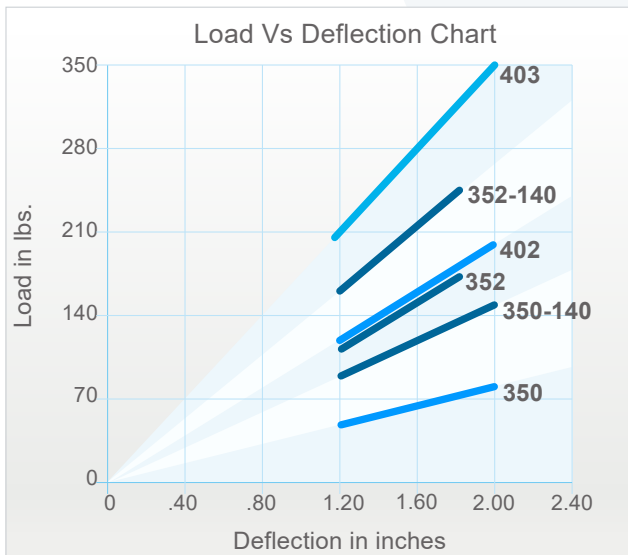


### Features:

- ✓ Safety factor: Springs will accommodate an additional 50% load from the rated load to the solid load.
- ✓ All hangers' elements are safe at solid load.
- ✓ All springs are designed with a horizontal stiffness of 0.8 times of the vertical rated stiffness ( $K_x / K_y$ ).
- ✓ Recommended load range: from 50% of rated load to rated load.
- ✓ Yellow zinc-plating housing and powder-coating springs provide excellent corrosion resistance.
- ✓ Acoustic elastomer spring cups provide superior vibration isolation and noise reduction.
- ✓ Springs are color-coded and easily replaceable.
- ✓ HD-S hangers allow a rod misalignment of 30°.

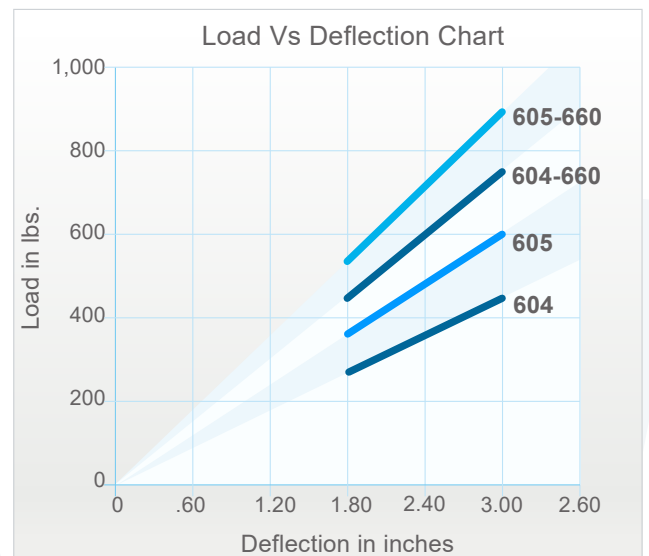
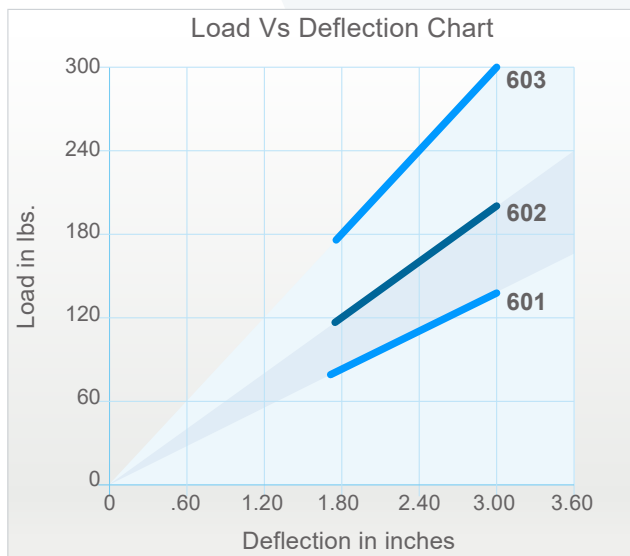
## 2" DEFLECTION SPRING HANGERS

Model	Rated Load (lbs)	Deflection at Rated Load (lin)	Spring Rate (lbs/in)	Spring Color	Ship. Weight (lbs)
HD-S-350	80	2	40	Plated	8.5
HD-S-350-140	150	2	75	Plated/Plated	9
HD-S-352	180	1.8	100	Plated	8.5
HD-S-402	200	2	100	Grey	8.5
HD-S-352-140	250	1.8	125	Plated/Plated	9
HD-S-403	348	2	174	Black	8.5
HD-S-404	453	2	226	Blue	8.5
HD-S-405	590	2	295	Red	8.5
HD-S-406	676	2	338	Orange	8.5
HD-S-407	787	2	393	Green	8.5
HD-S-408	918	2	459	White	8.5
HD-S-409	1,000	2	500	Brown	8.5
HD-S-410	1,250	2	625	Yellow	8.5
HD-S-407-150	1,587	2	793	Green/Grey	9
HD-S-409-150	1,800	2	900	Brown/Grey	9
HD-S-410-150	2,050	2	1,025	Yellow/Grey	9



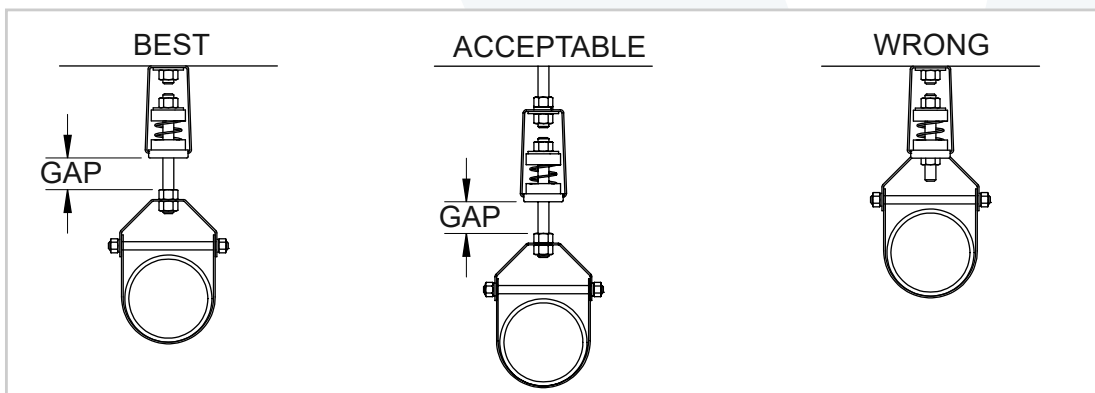
## 3" DEFLECTION SPRING HANGERS

Model	Rated Load (lbs)	Deflection at Rated Load (lin)	Spring Rate (lbs/in)	Spring Color	Ship. Weight (lbs)
HD-S-601	140	3	46.6	Blue	10
HD-S-602	200	3	66.6	Yellow	10
HD-S-603	300	3	100	Orange	10
HD-S-604	450	3	150	Red	10
HD-S-605	600	3	200	Green	10
HD-S-604-660	750	3	250	Red/Grey	11
HD-S-605-660	900	3	300	Green/Grey	11



### Installation Instructions:

For optimal isolator performance, install hangers with the specified gap as shown below. Designed to accommodate minor misalignments, these hangers support a maximum recommended rod diameter of 5/8", allowing up to 30° of movement before contacting the elastomeric bottom cup.



### Notes:

- a) 400 Spring: 3" Outside diameter x 5.75" Free Length.
- b) 600 Spring: 3" Outside diameter x 6.75" Free Length.
- c) Rated load is the maximum load recommended.