

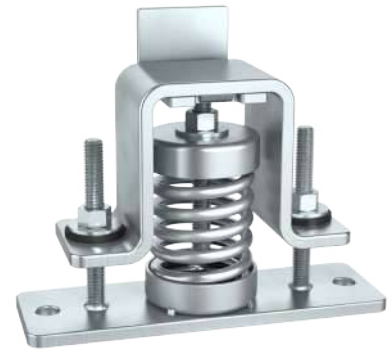
## 1" & 2" DEFLECTION SEISMIC RESTRAINED OPEN SPRING MOUNTS

**SMSR-AA/AF/AT** mounts are designed to provide efficient isolation from critical vibrations and all-directional restraint from vertical and horizontal forces, as well as from forces due to seismic activities and high wind loads. Vibrasystems isolators are tested and certified to ASHRAE 171-2017 for wind and seismic load resistance. There are three available configurations:

- SMSR-AA : top with angle, and inside leveling adjustment feature
- SMSR-AF : flat top, and inside leveling adjustment feature
- SMSR-AT : bolt top with leveling adjustment feature

### Recommended for:

HVAC equipment, fan air circulation systems, compressors, pumps, chillers, AC, cooling towers, inertia bases, etc.



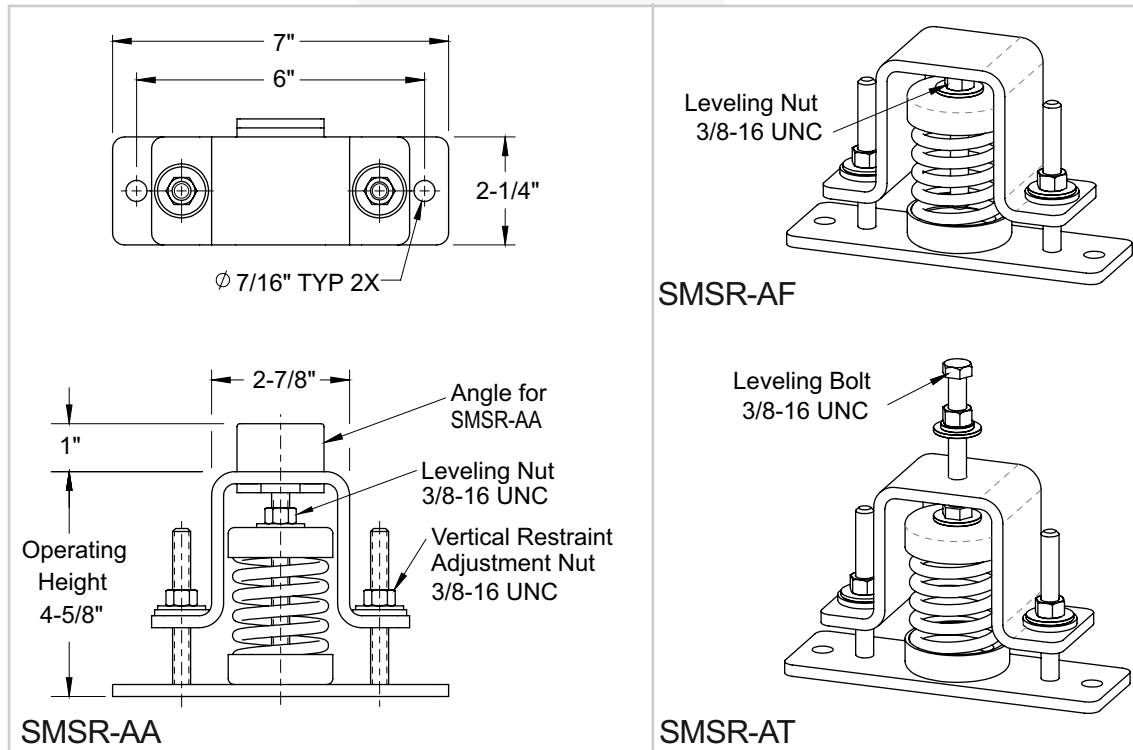
SMSR-AA



SMSR-AF



SMSR-AT



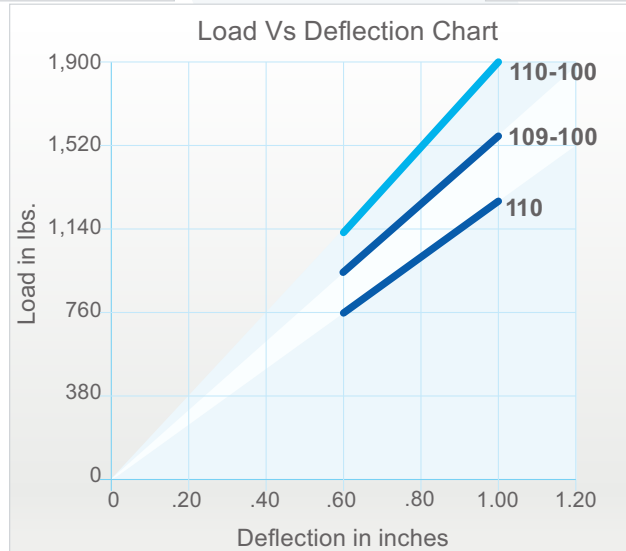
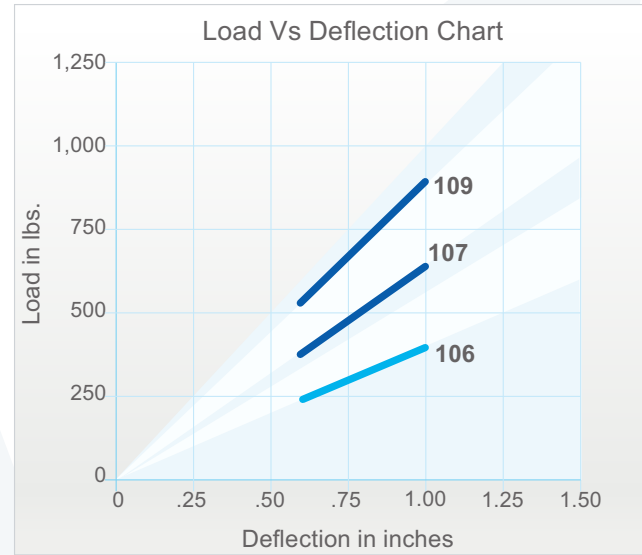
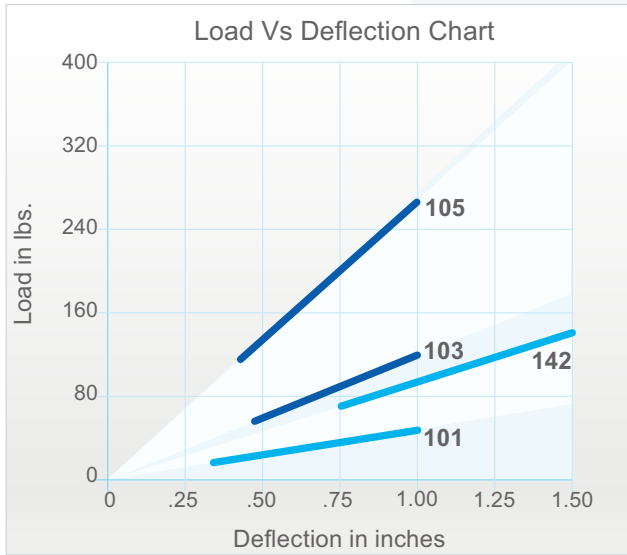
### Features:

- ✓ Safety Factor: Springs will accommodate an additional 50% load from the rated load to the solid load.
- ✓ All spring mounts' elements are safe at solid load.
- ✓ Rugged welded steel housing designed to withstand seismic and high wind forces.
- ✓ Zinc-plating housing and powder-coating springs provide excellent corrosion resistance.
- ✓ Anti-skid rubber acoustical pad is optional.
- ✓ Springs are color-coded and easily replaceable.

Tested & Certified to: ANSI/ASHRAE 171-2017  
Wind & Seismic Maximum Vertical Load Resistance: 4,860 lbs

## 1" DEFLECTION SEISMIC RESTRAINED OPEN SPRING MOUNTS

Model	Rated Load (lbs)	Deflection at Rated Load (in)	Spring Rate (lbs/in)	Spring Color	Ship. Weight (lbs)
SMSR-101	50	1	50	Blue	4.5
SMSR-103	120	1	120	Brown	4.5
SMSR-142	135	1.50	90	Plated	4.5
SMSR-105	270	1	270	Yellow	4.5
SMSR-106	400	1	400	Red	4.5
SMSR-107	650	1	650	Green	4.5
SMSR-109	900	1	900	White	4.5
SMSR-110	1,250	1	1,250	Red w/Orange line	4.5
SMSR-109-100	1,550	1	1,550	White/Grey	5
SMSR-110-100	1,900	1	1,900	Red w/Orange line/Grey	5

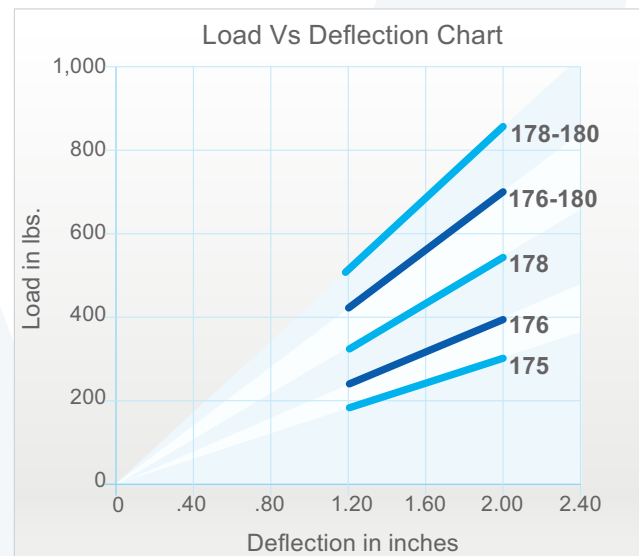
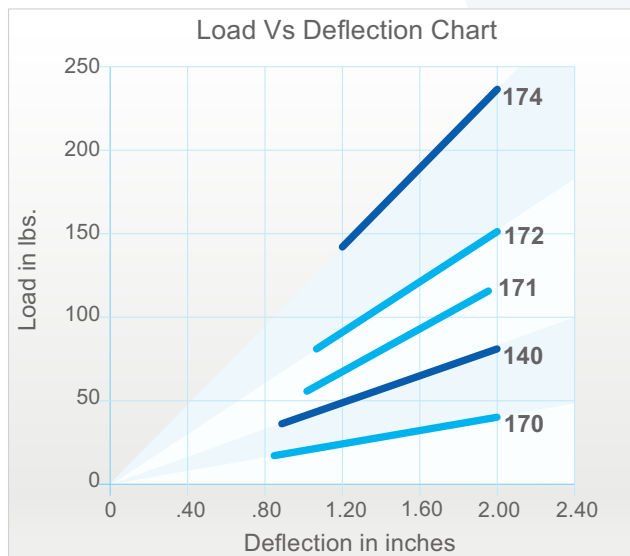


Models are available in three configurations: SMSR-AA, SMSR-AF, and SMSR-AT.

## 2" DEFLECTION SEISMIC RESTRAINED OPEN SPRING MOUNTS

Model	Rated Load (lbs)	Deflection at Rated Load (lin)	Spring Rate (lbs/in)	Spring Color	Ship. Weight (lbs)
SMSR-170	43	2	22	Blue	4.5
SMSR-140	80	2	40	Green	4.5
SMSR-171	120	2	60	Red	4.5
SMSR-172	155	2	78	Orange	4.5
SMSR-174	236	2	118	White	4.5
SMSR-175	300	2	150	Brown	4.5
SMSR-176	395	2	198	Black	4.5
SMSR-178	550	2	275	Pink	4.5
SMSR-176-180	695	2	347	Black/Grey	5
SMSR-178-180	850	2	425	Pink/Grey	5

Models are available in three configurations: SMSR-AA, SMSR-AF, and SMSR-AT



### Notes:

- Vibrasystems isolators are tested and certified to ASHRAE 171-2017 for wind and seismic load resistance. Wind and Seismic Certification Compliance Report 1701502-CR-001-R1 is available upon request.
- 170 & 140 Springs: 2" Outside diameter x 5" Free Length.
- 180 Springs: 1.250" Outside diameter x 5" Free Length (180 spring, at its rated load, offers an additional 40% travel before reaching the solid height).
- 100 Spring: 2" Outside diameter x 4" Free Length.
- For springs 142, 144, 146, and 148 the spring mount's operating height is 5-1/8".
- Rated load is the maximum load recommended.
- Anti-skid rubber acoustical pad can be provided upon request.