

## 2" & 3" DEFLECTION RESTRAINED SPRING MOUNTS

SMSR-4-BF/BT mounts are designed to provide efficient isolation from critical vibrations and all-directional restraint from vertical and horizontal forces, as well as from forces due to seismic activities and high wind loads. There are two available configurations:

SMSR-4-BF: flat top, and inside leveling adjustment feature

SMSR-4-BT: bolt top with leveling adjustment feature

### Recommended for:

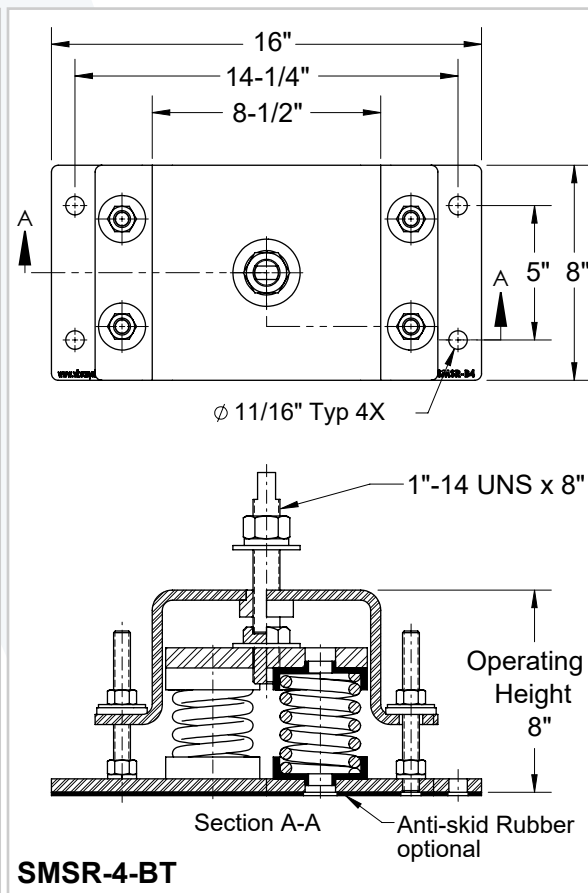
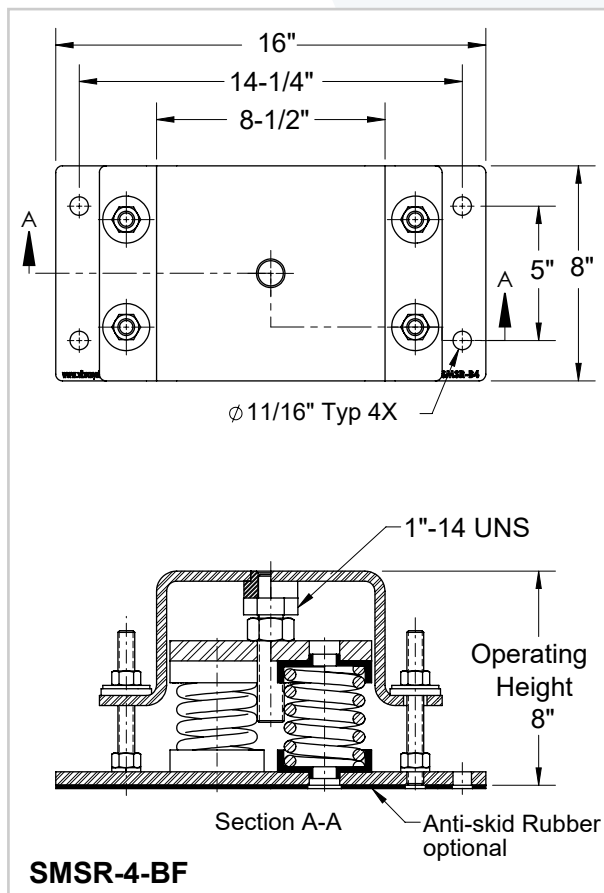
HVAC equipment, fan air circulation systems, compressors, pumps, chillers, AC units, cooling towers, inertia bases, etc.



SMSR-4-BF



SMSR-4-BT



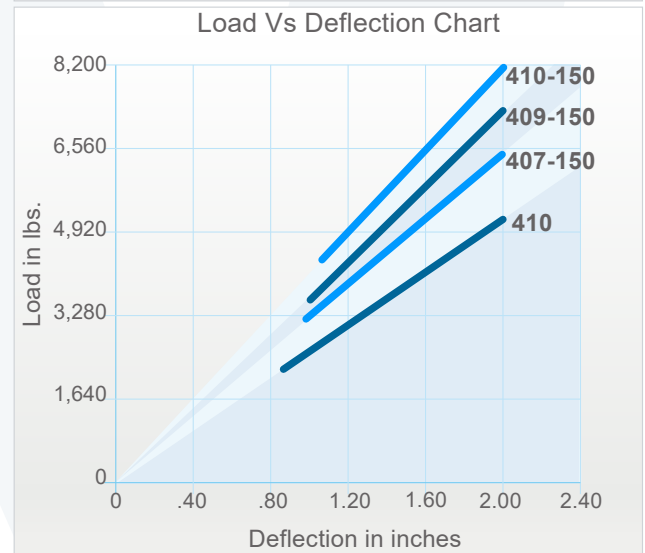
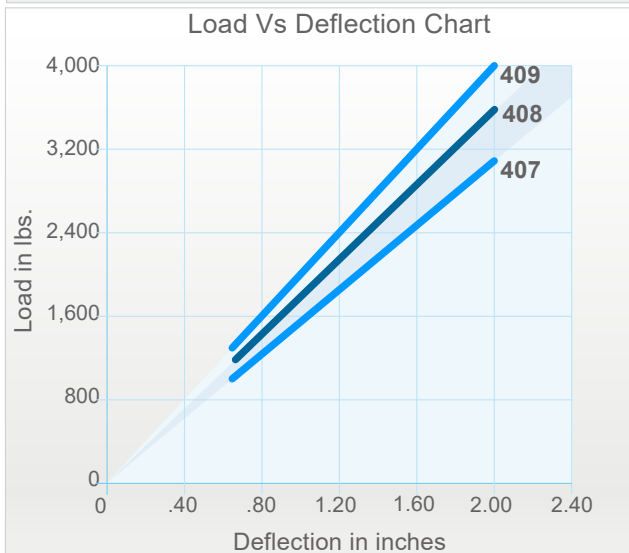
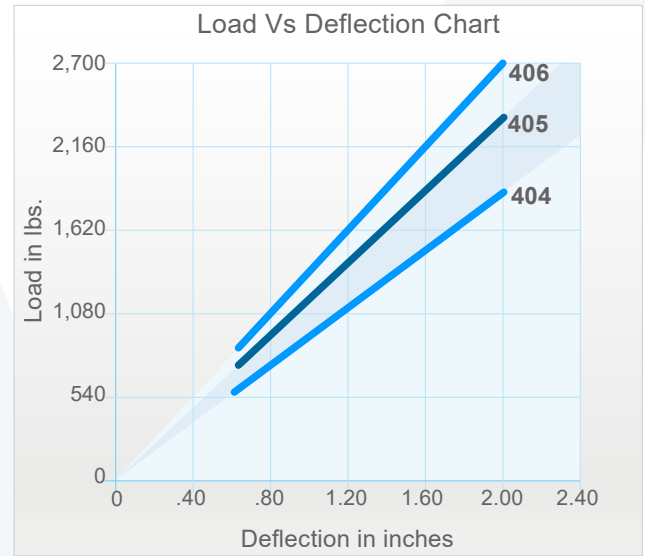
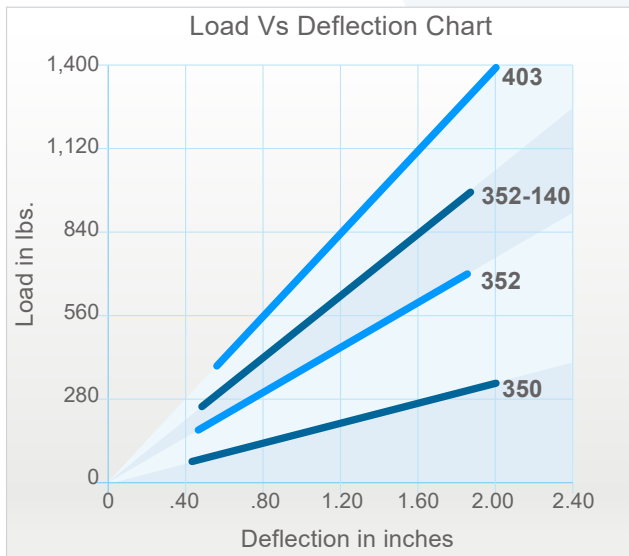
### Features:

- ✓ All springs at rated loads have 50% additional travel to solid load.
- ✓ All mounts' elements are safe at solid load.
- ✓ Safety Factor - Springs will accommodate 50% extra load from rated load to solid load.
- ✓ Springs are color coded and easily replaceable.
- ✓ Hot-dip galvanizing housing provides excellent corrosion resistance.
- ✓ Elastomer spring base cap provides better vibration isolation, load distribution and noise reduction.
- ✓ Anti-skid rubber acoustical pad is optional.

## 2" DEFLECTION RESTRAINED SPRING MOUNTS

Model	Rated Load (lbs)	Deflection at Rated Load (lin)	Spring Rate (lbs/in)	Spring Color
SMSR-4-350	320	2	160	Red
SMSR-4-352	720	1.8	400	Plated
SMSR-4-352-140	1,000	1.8	500	Plated/Black
SMSR-4-403	1,392	2	696	Black
SMSR-4-404	1,812	2	906	Blue
SMSR-4-405	2,360	2	1,180	Red
SMSR-4-406	2,704	2	1,352	Orange
SMSR-4-407	3,148	2	1,574	Green
SMSR-4-408	3,672	2	1,836	White
SMSR-4-409	4,000	2	2,000	Brown
SMSR-4-410	5,000	2	2,500	White
SMSR-4-407-150	6,348	2	3,174	Green/Grey
SMSR-4-409-150	7,200	2	3,600	Brown/Grey
SMSR-4-410-150	8,200	2	4,100	White/Grey

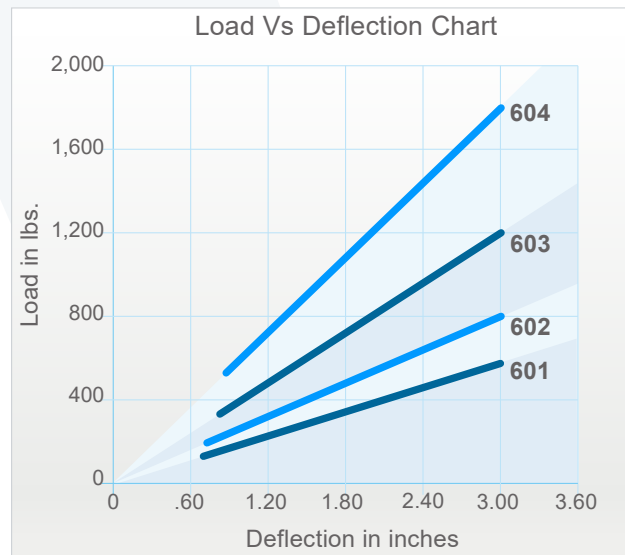
Models are available in two configurations: SMSR-4-BF, and SMSR-4-BT.



## 3" DEFLECTION RESTRAINED SPRING MOUNTS

Model	Rated Load (lbs)	Deflection at Rated Load (lin)	Spring Rate (lbs/in)	Spring Color
SMSR-4-601	560	3	186	Blue
SMSR-4-602	800	3	266	Yellow
SMSR-4-603	1,200	3	400	Orange
SMSR-4-604	1,800	3	600	Red

Models are available in two configurations: SMSR-4-BF, and SMSR-4-BT.



### Notes:

- a) 350 Spring: 3" Outside diameter x 5" Free Length.
- b) 140 Spring & 170 Spring: 2" Outside diameter x 5" Free Length.
- c) 400 Spring: 3" Outside diameter x 5.75" Free Length.
- d) 150 Spring: 2" Outside diameter x 5.75" Free Length.
- e) 600 Spring: 3" Outside diameter x 6.75" Free Length
- f) Rated load is the maximum load recommended.
- g) Anti-skid rubber acoustical Pad can be provided upon request.

### Model nomenclature:

SMSR-4-BT-410

