

1", 2", & 3" DEFLECTION SEISMIC RESTRAINED SPRING MOUNT

SMSR-4-BF/BT mounts are designed to provide efficient isolation from critical vibrations and all-directional restraint from vertical and horizontal forces, as well as from forces due to seismic activities and high wind loads. There are two available configurations:

SMSR-4-BF: flat top, and inside leveling adjustment feature

SMSR-4-BT: bolt top with leveling adjustment feature

Recommended for:

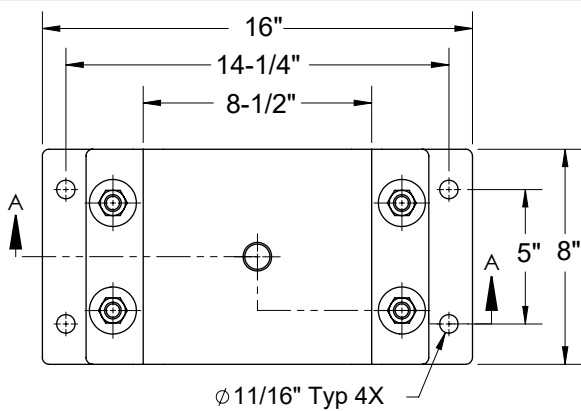
HVAC equipment, engine-generators (gensets), fan air circulation systems, compressors, pumps, chillers, AC units, cooling towers, inertia bases, etc.



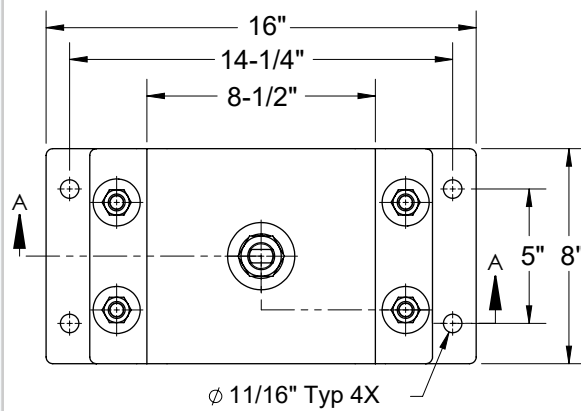
SMSR-4-BF



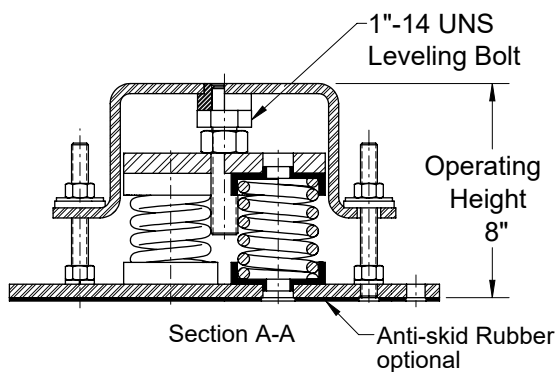
SMSR-4-BT



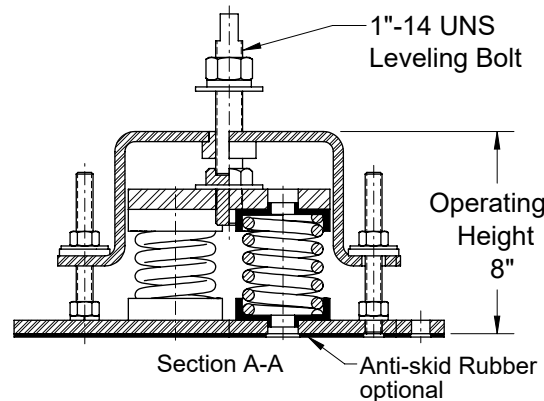
Ø 11/16" Typ 4X



Ø 11/16" Typ 4X



SMSR-4-BF (Flat top): Overall dimensions



SMSR-4-BT (Top bolt): Overall dimensions

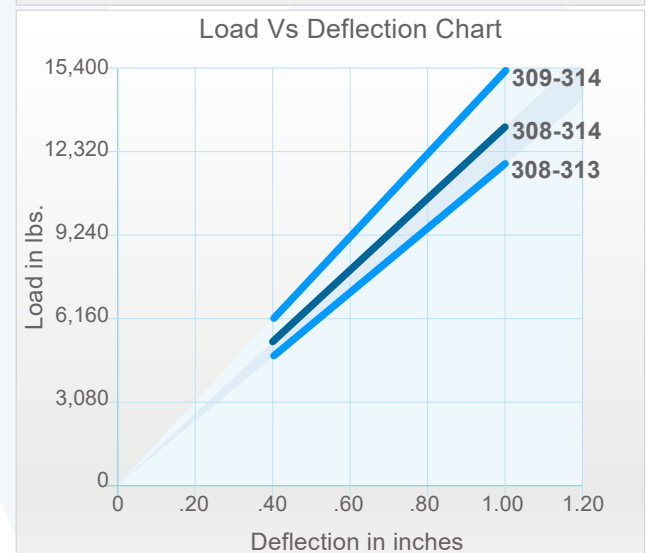
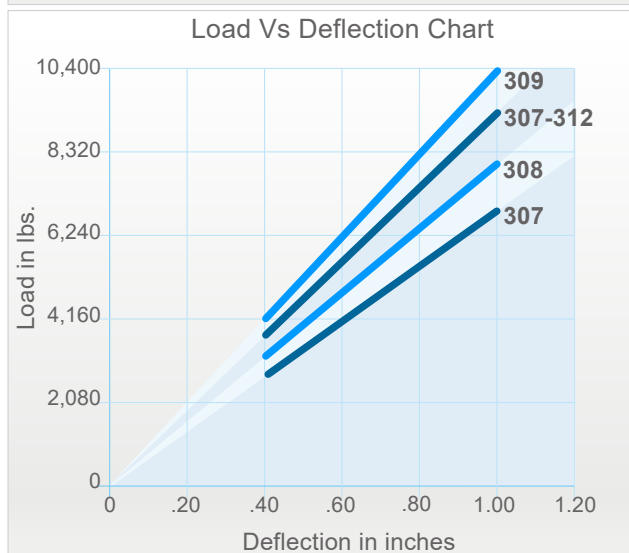
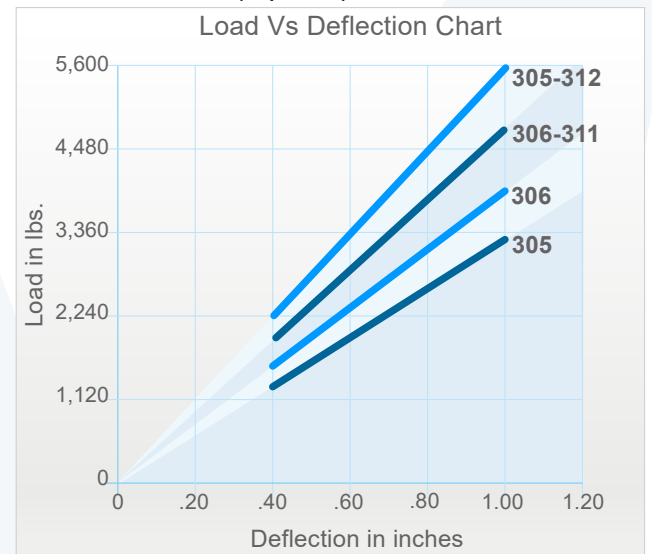
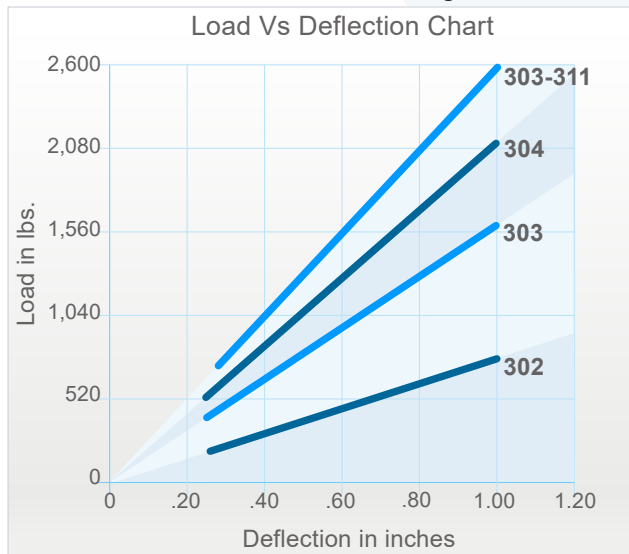
Features:

- ✓ Safety Factor: Springs will accommodate an additional 50% load from the rated load to the solid load.
- ✓ Rugged welded steel housing designed to withstand seismic and high wind forces.
- ✓ All spring mounts' elements are safe at solid load.
- ✓ Anti-skid rubber acoustical pad is optional.
- ✓ Hot-dip galvanizing housing and powder-coating springs provide excellent corrosion resistance.
- ✓ Acoustic elastomer spring cups provide superior vibration isolation and noise reduction.
- ✓ Springs are color-coded and easily replaceable.

1" DEFLECTION SEISMIC RESTRAINED SPRING MOUNT

Model	Rated Load (lbs)	Deflection at Rated Load (lin)	Spring Rate (lbs/in)	Spring Color	Ship. Weight (lbs)
SMSR-4-302	780	1	780	Yellow	56
SMSR-4-303	1,600	1	1,600	Orange	56
SMSR-4-304	2,120	1	2,120	Red	56
SMSR-4-303-311	2,600	1	2,600	Orange/Green	60
SMSR-4-305	3,300	1	3,300	White	56
SMSR-4-306	4,000	1	4,000	Brown	56
SMSR-4-306-311	4,800	1	4,800	Brown/Green	60
SMSR-4-305-312	5,600	1	5,600	White/Yellow	60
SMSR-4-307	6,800	1	6,800	Green	56
SMSR-4-308	8,000	1	8,000	Black	56
SMSR-4-307-312	9,320	1	9,320	Green/Yellow	60
SMSR-4-309	10,400	1	10,400	Blue	56
SMSR-4-308-313	11,960	1	11,960	Black/Orange	60
SMSR-4-308-314	13,000	1	13,000	Black/Grey	60
SMSR-4-309-314	15,400	1	15,400	Blue/Grey	60

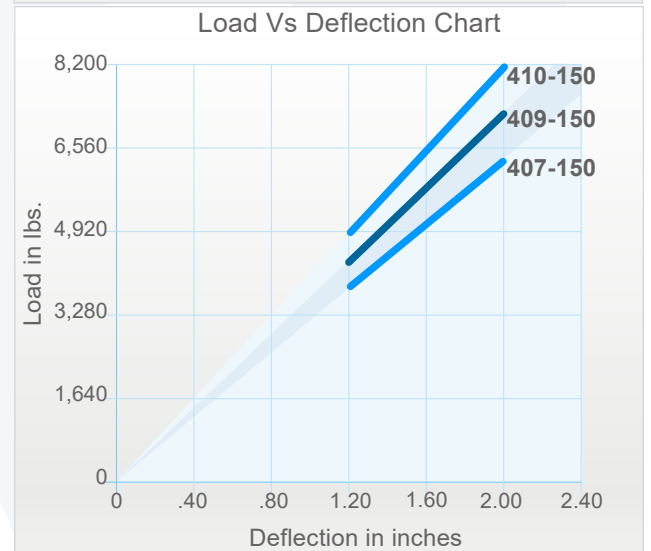
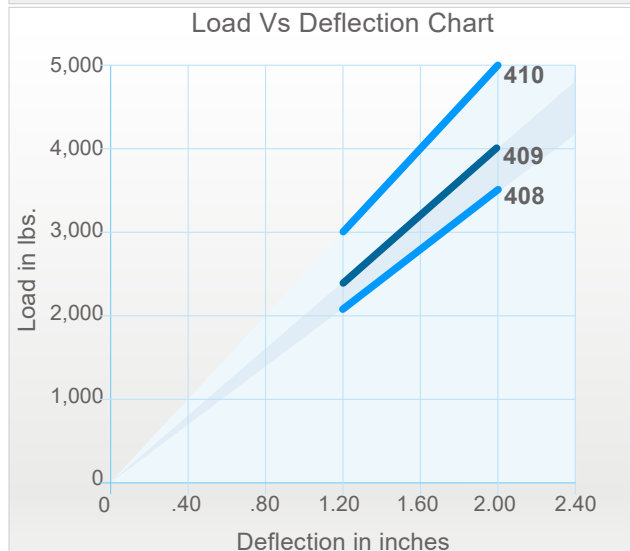
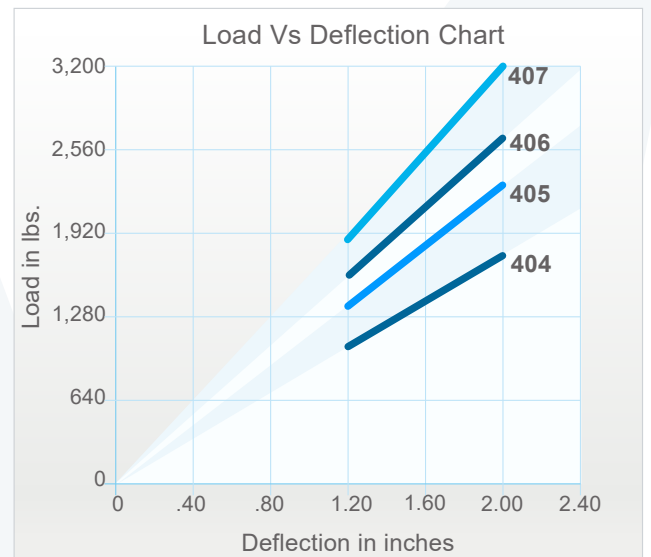
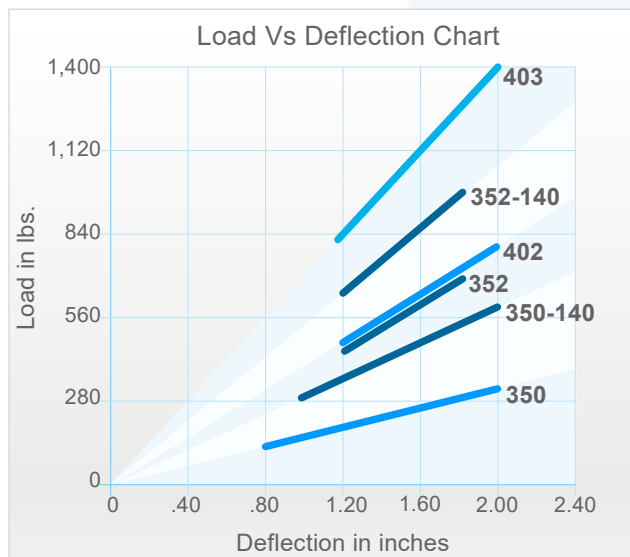
Models are available in two configurations: SMSR-4-BF (flat top), and SMSR-4-BT (top bolt).



2" DEFLECTION SEISMIC RESTRAINED SPRING MOUNT

Model	Rated Load (lbs)	Deflection at Rated Load (lin)	Spring Rate (lbs/in)	Spring Color	Ship. Weight (lbs)
SMSR-4-350	320	2	160	Plated	58
SMSR-4-350-140	600	2	300	Plated/Plated	62
SMSR-4-352	720	1.8	400	Plated	58
SMSR-4-402	800	2	400	Grey	58
SMSR-4-352-140	1,000	1.8	555	Plated/Plated	62
SMSR-4-403	1,392	2	696	Black	58
SMSR-4-404	1,812	2	906	Blue	58
SMSR-4-405	2,360	2	1,180	Red	58
SMSR-4-406	2,704	2	1,352	Orange	58
SMSR-4-407	3,148	2	1,574	Green	58
SMSR-4-408	3,672	2	1,836	White	58
SMSR-4-409	4,000	2	2,000	Brown	58
SMSR-4-410	5,000	2	2,500	Yellow	58
SMSR-4-407-150	6,348	2	3,174	Green/Grey	62
SMSR-4-409-150	7,200	2	3,600	Brown/Grey	62
SMSR-4-410-150	8,200	2	4,100	Yellow/Grey	62

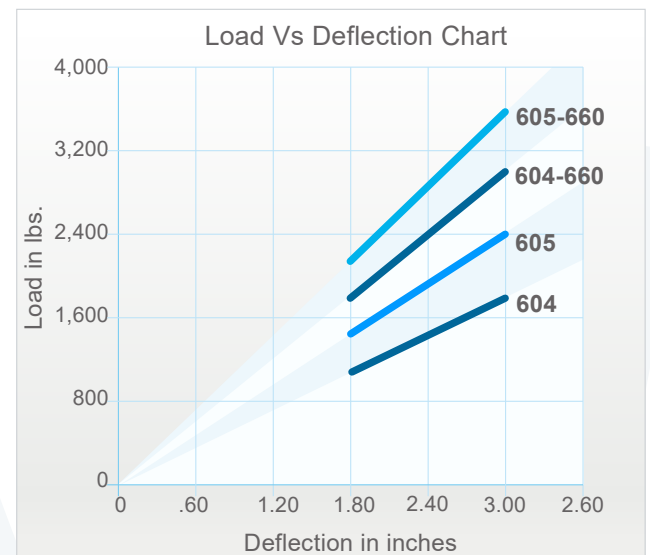
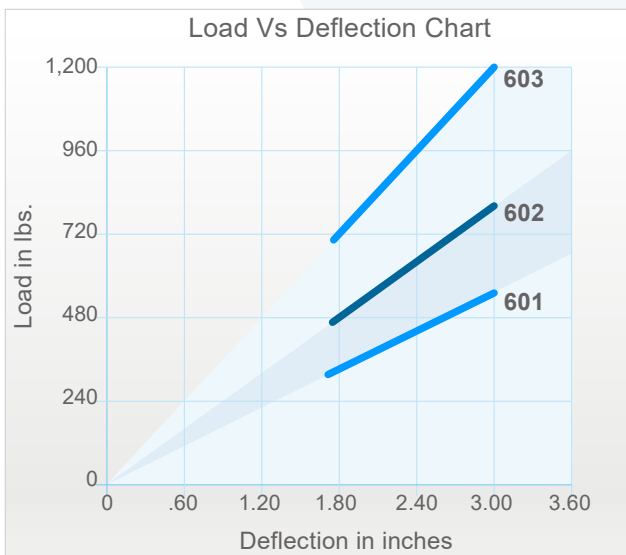
Models are available in two configurations: SMSR-4-BF (flat top), and SMSR-4-BT (top bolt).



3" DEFLECTION SEISMIC RESTRAINED SPRING MOUNT

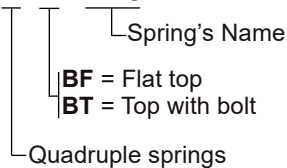
Model	Rated Load (lbs)	Deflection at Rated Load (lin)	Spring Rate (lbs/in)	Spring Color	Ship. Weight (lbs)
SMSR-4-601	560	3	186.6	Blue	60
SMSR-4-602	800	3	266.6	Yellow	60
SMSR-4-603	1,200	3	400	Orange	60
SMSR-4-604	1,800	3	600	Red	60
SMSR-4-605	2,400	3	800	Green	60
SMSR-4-604-660	3,000	3	1,000	Red/Grey	64
SMSR-4-605-660	3,600	3	1,200	Green/Grey	64

Models are available in two configurations: SMSR-4-BF (flat top), and SMSR-4-BT (top bolt).



Model nomenclature:

SMSR-4-BT-410



Notes:

- a) 300 Spring: 3" Outside diameter x 4.75" Free Length.
- b) 310 Spring: 1.75" Outside diameter x 4.75" Free Length.
- c) 400 Spring: 3" Outside diameter x 5.75" Free Length.
- d) 150 Spring: 2" Outside diameter x 5.75" Free Length.
- e) 600 Spring: 3" Outside diameter x 6.75" Free Length
- f) 660 Spring: 2" Outside diameter x 6.75" Free Length
- g) Rated load is the maximum load recommended.