

## 1", 2", & 3" DEFLECTION SEISMIC RESTRAINED SPRING MOUNT

SMSR-2-BF/BT mounts are designed to provide efficient isolation from critical vibrations and all-directional restraint from vertical and horizontal forces, as well as from forces due to seismic activities and high wind loads. There are two available configurations:

SMSR-2-BF: flat top, and inside leveling adjustment feature

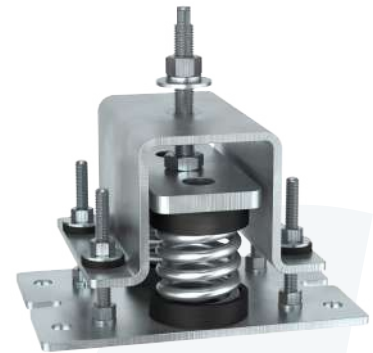
SMSR-2-BT: bolt top with leveling adjustment feature

### Recommended for:

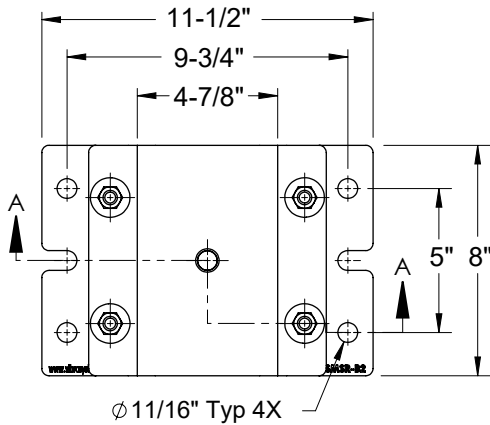
HVAC equipment, engine-generators (gensets), fan air circulation systems, compressors, pumps, chillers, AC units, cooling towers, inertia bases, etc.



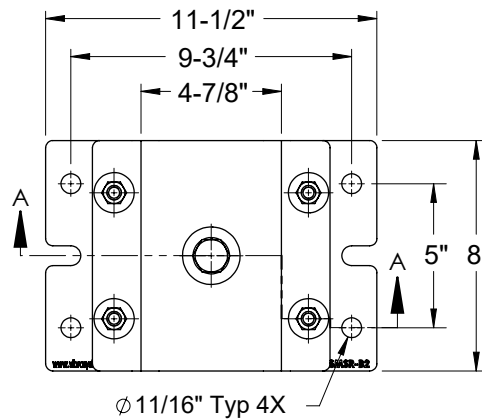
SMSR-2-BF



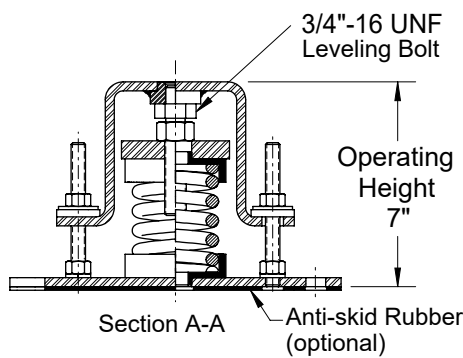
SMSR-2-BT



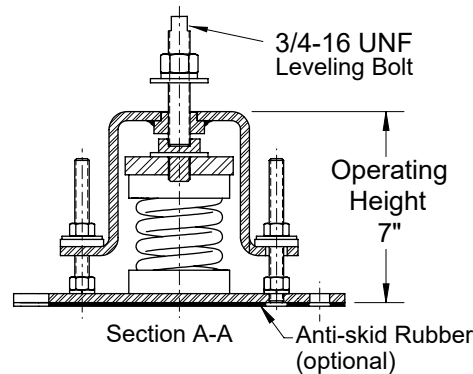
Ø 11/16" Typ 4X



Ø 11/16" Typ 4X



SMSR-2-BF (Flat top): Overall dimensions



SMSR-2-BT (Top bolt): Overall dimensions

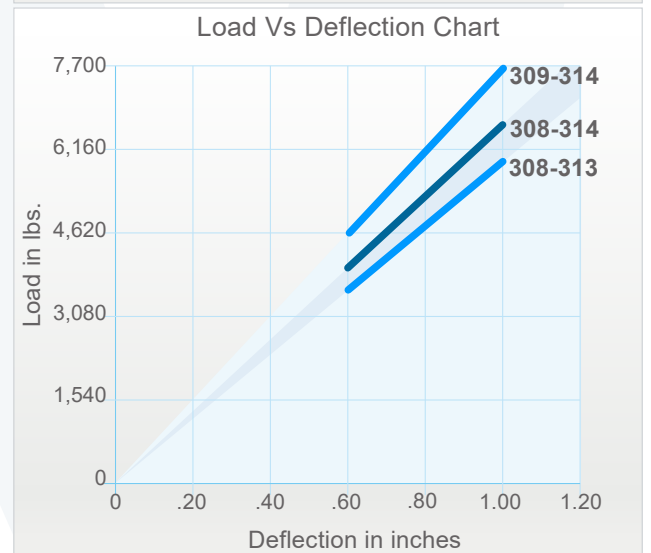
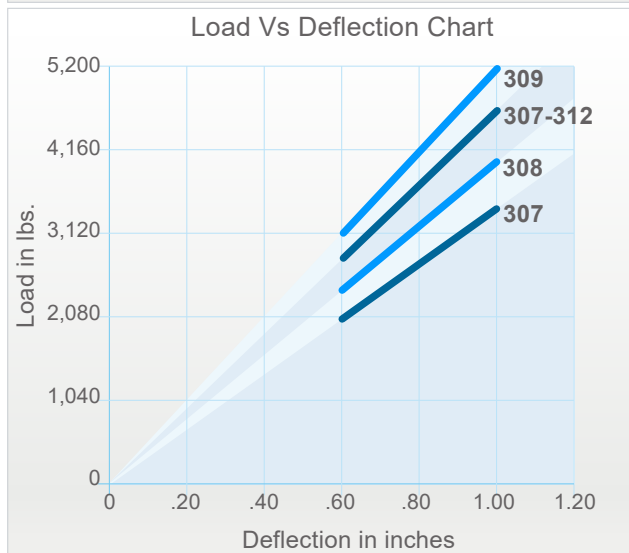
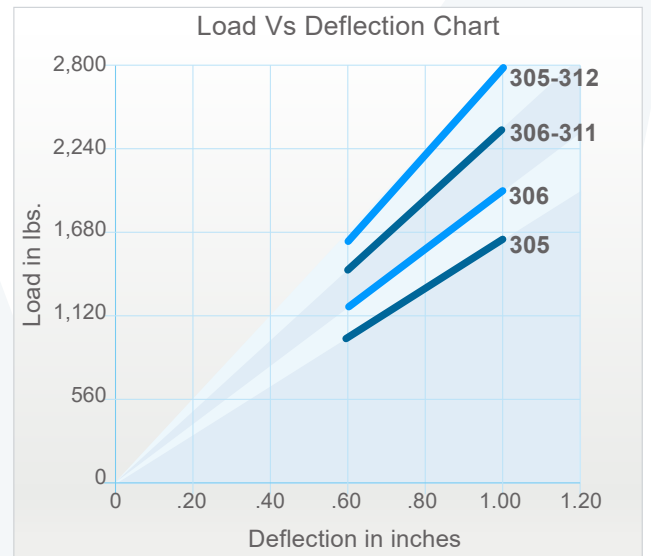
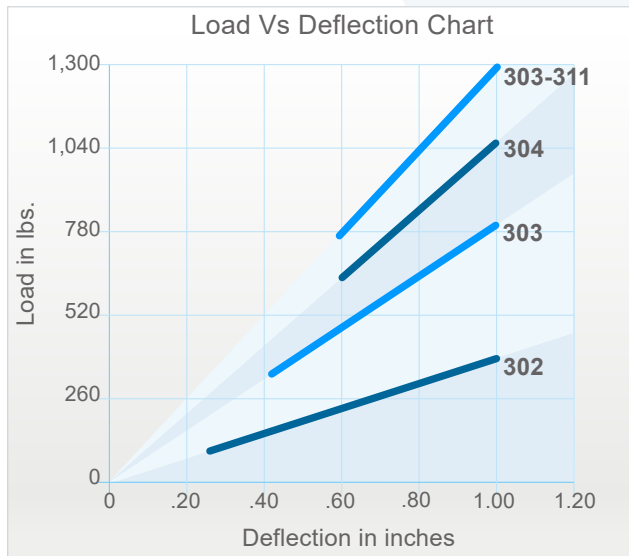
### Features:

- ✓ Safety Factor: Springs will accommodate an additional 50% load from the rated load to the solid load.
- ✓ Rugged welded steel housing designed to withstand seismic and high wind forces.
- ✓ All spring mounts' elements are safe at solid load.
- ✓ Anti-skid rubber acoustical pad is optional.
- ✓ Zinc-plating housing and powder-coating springs provide excellent corrosion resistance.
- ✓ Acoustic elastomer spring cups provide superior vibration isolation and noise reduction.
- ✓ Springs are color-coded and easily replaceable.

## 1" DEFLECTION SEISMIC RESTRAINED SPRING MOUNT

Model	Rated Load (lbs)	Deflection at Rated Load (lin)	Spring Rate (lbs/in)	Spring Color	Ship. Weight (lbs)
SMSR-2-302	390	1	390	Yellow	31
SMSR-2-303	800	1	800	Orange	31
SMSR-2-304	1,060	1	1,060	Red	31
SMSR-2-303-311	1,300	1	1,300	Orange/Green	33
SMSR-2-305	1,650	1	1,650	White	31
SMSR-2-306	2,000	1	2,000	Brown	31
SMSR-2-306-311	2,400	1	2,400	Brown/Green	33
SMSR-2-305-312	2,800	1	2,800	White/Yellow	33
SMSR-2-307	3,400	1	3,400	Green	31
SMSR-2-308	4,000	1	4,000	Black	31
SMSR-2-307-312	4,660	1	4,660	Green/Yellow	33
SMSR-2-309	5,200	1	5,200	Blue	31
SMSR-2-308-313	5,980	1	5,980	Black/Orange	33
SMSR-2-308-314	6,500	1	6,500	Black/Grey	33
SMSR-2-309-314	7,700	1	7,700	Blue/Grey	33

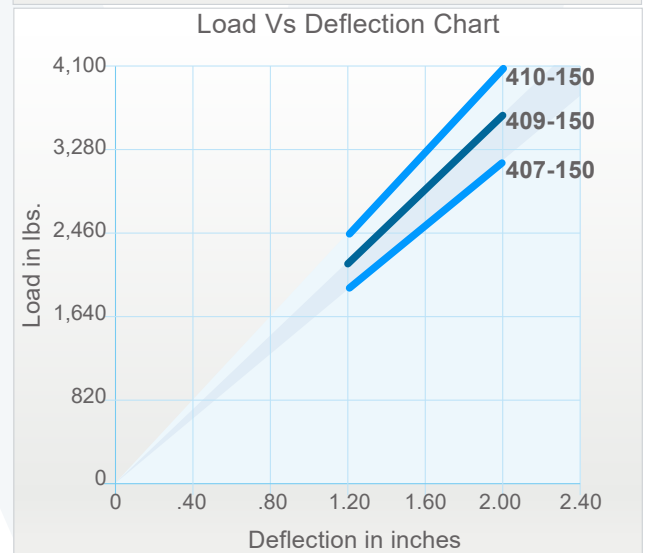
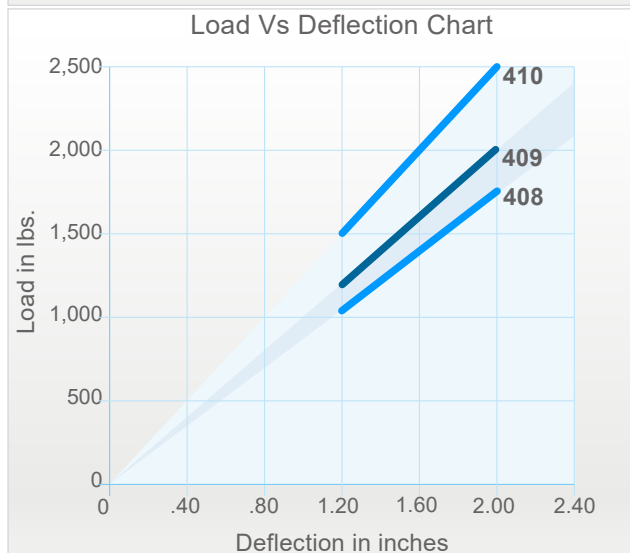
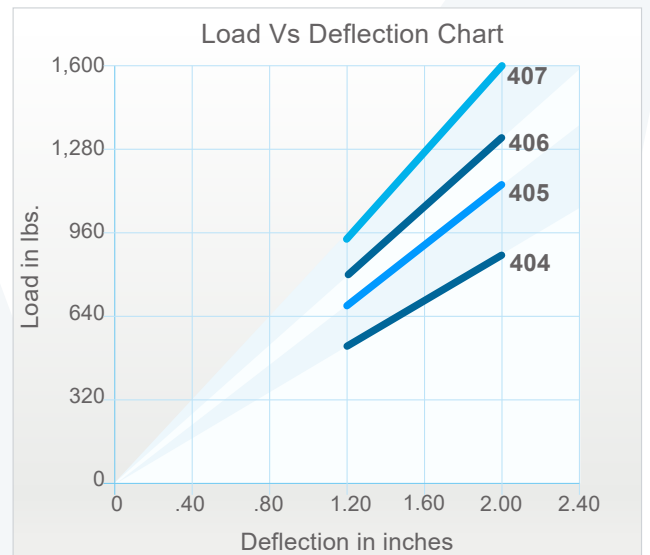
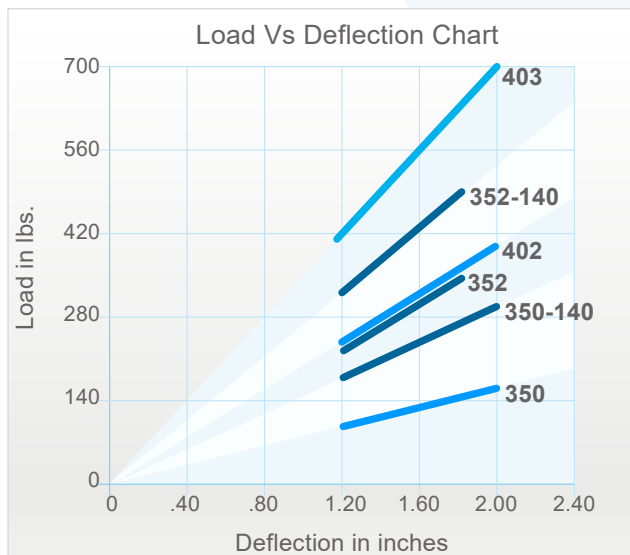
Models are available in two configurations: SMSR-2-BF (flat top), and SMSR-2-BT (top bolt).



## 2" DEFLECTION SEISMIC RESTRAINED SPRING MOUNT

Model	Rated Load (lbs)	Deflection at Rated Load (lin)	Spring Rate (lbs/in)	Spring Color	Ship. Weight (lbs)
SMSR-2-350	160	2	80	Plated	32
SMSR-2-350-140	300	2	150	Plated/Plated	34
SMSR-2-352	360	1.8	200	Plated	32
SMSR-2-402	400	2	200	Grey	32
SMSR-2-352-140	500	1.8	277	Plated/Plated	34
SMSR-2-403	696	2	348	Black	32
SMSR-2-404	906	2	453	Blue	32
SMSR-2-405	1,180	2	590	Red	32
SMSR-2-406	1,352	2	676	Orange	32
SMSR-2-407	1,574	2	787	Green	332
SMSR-2-408	1,836	2	918	White	32
SMSR-2-409	2,000	2	1,000	Brown	32
SMSR-2-410	2,500	2	1,250	Yellow	32
SMSR-2-407-150	3,174	2	1,587	Green/Grey	34
SMSR-2-409-150	3,600	2	1,800	Brown/Grey	34
SMSR-2-410-150	4,100	2	2,050	Yellow/Grey	34

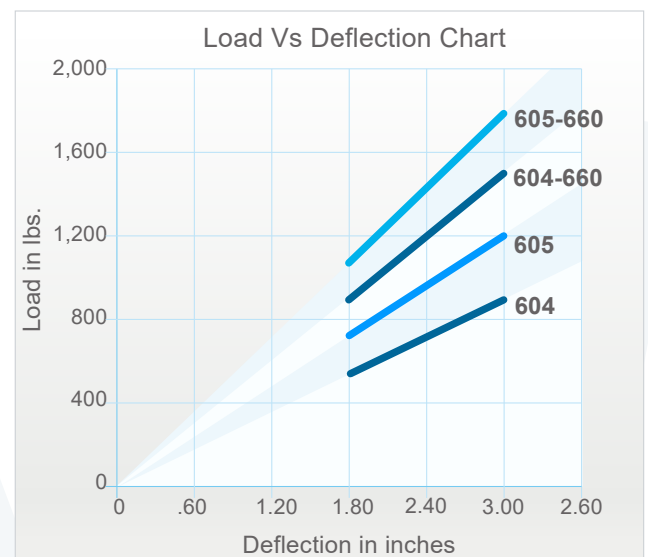
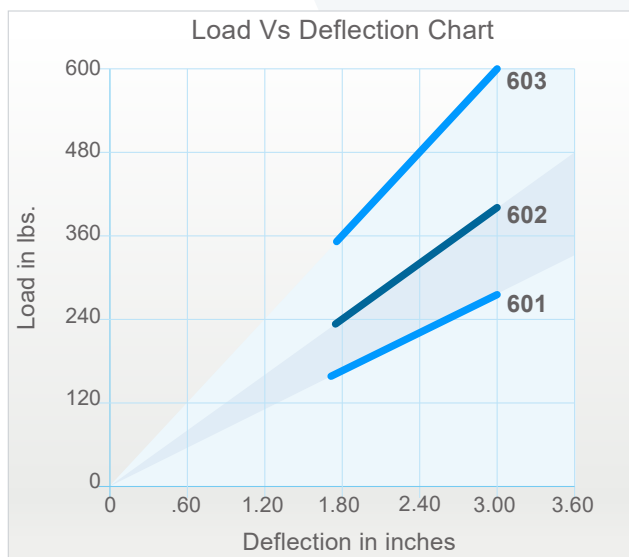
Models are available in two configurations: SMSR-2-BF (flat top), and SMSR-2-BT (top bolt).



## 3" DEFLECTION SEISMIC RESTRAINED SPRING MOUNT

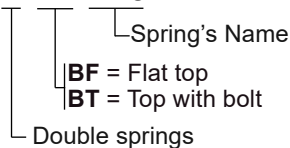
Model	Rated Load (lbs)	Deflection at Rated Load (lin)	Spring Rate (lbs/in)	Spring Color	Ship. Weight (lbs)
SMSR-2-601	280	3	93.3	Blue	33
SMSR-2-602	400	3	133.3	Yellow	33
SMSR-2-603	600	3	200	Orange	33
SMSR-2-604	900	3	300	Red	33
SMSR-2-605	1,200	3	400	Green	33
SMSR-2-604-660	1,500	3	500	Red/Grey	35
SMSR-2-605-660	1,800	3	600	Green/Grey	35

Models are available in two configurations: SMSR-2-BF (flat top), and SMSR-2-BT (top bolt).



### Model nomenclature:

SMSR-2-BT-410



### Notes:

- 300 Spring: 3" Outside diameter x 4.75" Free Length.
- 310 Spring: 1.75" Outside diameter x 4.75" Free Length.
- 400 Spring: 3" Outside diameter x 5.75" Free Length.
- 150 Spring: 2" Outside diameter x 5.75" Free Length.
- 600 Spring: 3" Outside diameter x 6.75" Free Length
- 660 Spring: 2" Outside diameter x 6.75" Free Length
- Rated load is the maximum load recommended.