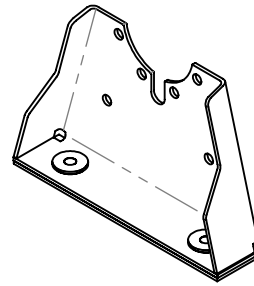
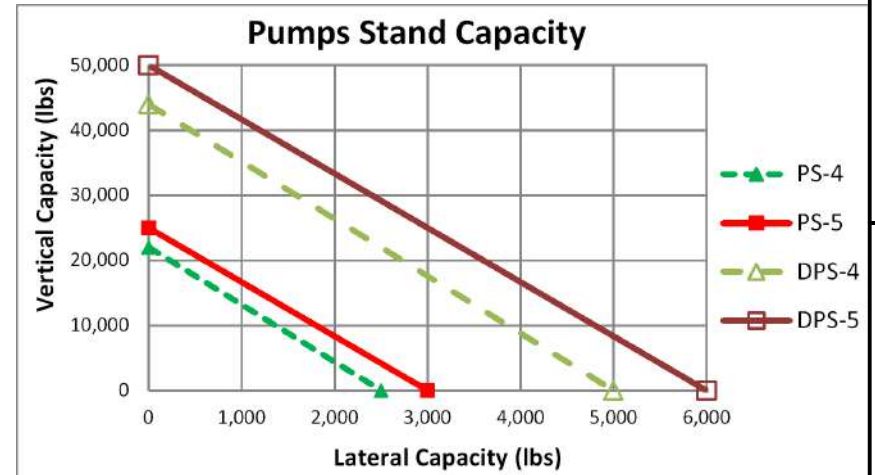
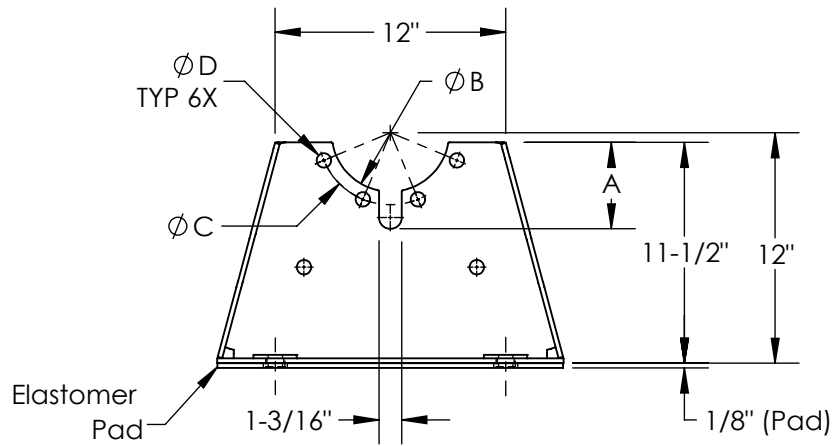
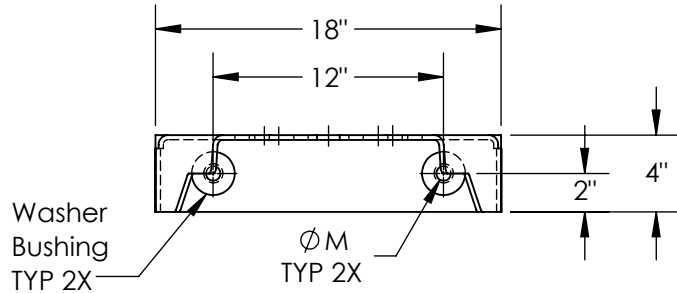
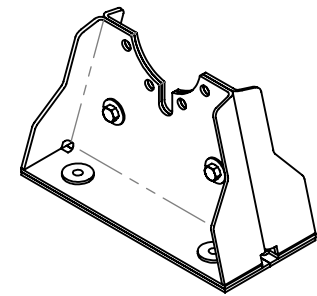


Model	Pipe size, (in)	Dimensions in Inches, (in)					Ship. Weight (lbs)	Qty.
		A	B	C	D	M		
PS-4	4	4.50	6.13	7.50	0.75	0.63	22	
PS-5	5	5.25	7.13	8.50	0.88	0.75	22	
DPS-4	4	4.50	6.13	7.50	0.75	0.63	44	
DPS-5	5	5.25	7.13	8.50	0.88	0.75	44	

PS - models



DPS - models



NAME	DATE	VibraSystems Inc www.vibrasystems.com		
DRAWN R.D.	2023-07-11			
APPR.	--	PART: Submittal - Pump Stand 4" to 5" Pipe Size		
QUANTITY	01	SIZE	DWG. NO.	REV
UNLESS OTHERWISE SPECIFIED: 3RD ANGLE PROJECTION DIMENSIONS ARE IN INCHES TOLERANCES: ANGULAR ± 1° FRACTIONAL ± .025 TWO PLACE DECIMAL ± .010 THREE PLACE DECIMAL ± .006		A	84-101-00-D	D
MODEL:	PS & DPS	SCALE: 1:10	DO NOT SCALE DRAWING	SHEET 1 OF 1

Notes:

1. Bolt holes and cutouts are sized to match ANSI 125 cast iron flange dimensions.
2. Elastomer Pad reduces minor vibration while Bridge-Bearing Neoprene Washer Bushings prevent metal to metal contact.
3. Pump Stands are made from rugged steel and painted for corrosion protection.
4. DPS consists of two PS Pump Stands bolted together; thus, the structural rigidity is increased.
5. Pump Stands must be installed in pairs for in-line pumps (see installation instructions).