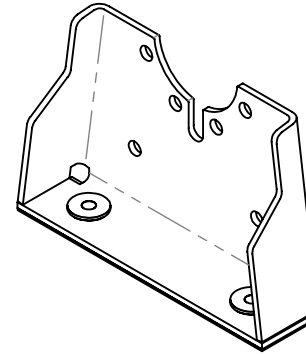
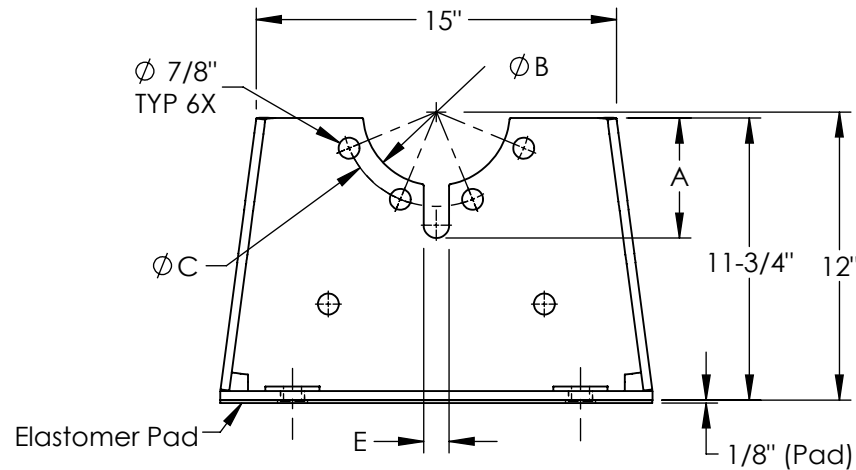
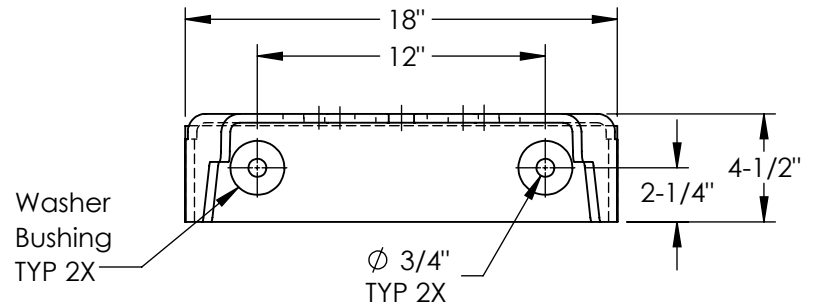
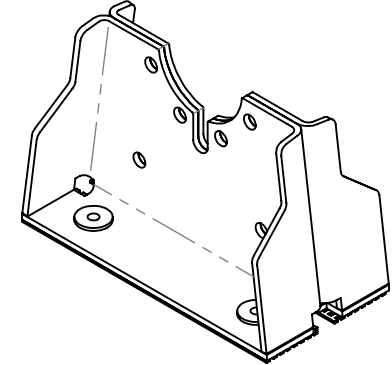


Model	Pipe size, (in)	Dimensions in Inches, (in)				Ship. Weight (lbs)
		A	B	C	E	
PS-4-250	4	5.00	6.13	7.88	1.06	32.5
PS-5-250	5	5.75	7.50	9.25	1.19	32.5

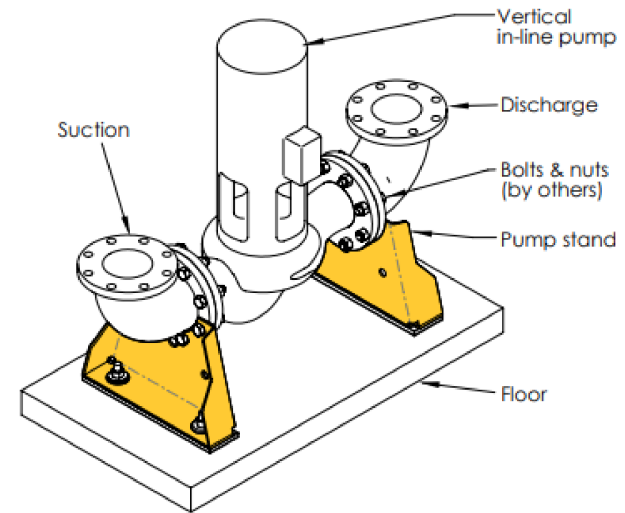
PS - models



DPS - models

**Notes:**

1. Bolt holes and cutouts are sized to match ANSI 250 and ANSI 300 flange dimensions.
2. Elastomer Pad reduces minor vibration while Bridge-Bearing Neoprene Washer Bushings prevent metal to metal contact.
3. Pump Stands are made from rugged steel and painted for corrosion protection.
4. DPS consists of two PS Pump Stands bolted together; thus, the structural rigidity is increased.
5. Pump Stands must be installed in pairs for in-line pumps (see installation instructions).



	NAME	DATE
DRAWN	R.D.	2025-03-07
APPR.	--	--
QUANTITY	01	
UNLESS OTHERWISE SPECIFIED:		
3RD ANGLE PROJECTION		
DIMENSIONS ARE IN INCHES		
TOLERANCES:		
ANGULAR ± 1°		
FRACTIONAL ± .025		
TWO PLACE DECIMAL ± .010		
THREE PLACE DECIMAL ± .006		
MODEL:		
PS & DPS		

VibraSystems Inc

www.vibrasystems.com

PART:

Submittal - Pump Stand
4" to 5" Pipe Size - Class 250

SIZE	DWG. NO.	REV
A	156-110-00-A	A
SCALE: 1:8		DO NOT SCALE DRAWING
SHEET 1 OF 1		