

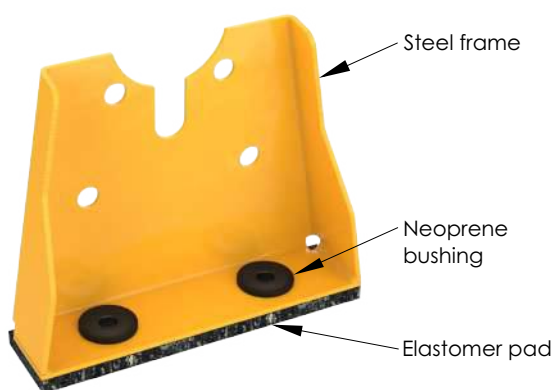
## HEAVY-DUTY VERTICAL IN-LINE PUMP STANDS

**PS** – Pump Stands are commonly used in the industry to give structural support to vertical in-line pumps while providing isolation from minor vibrations. The new line of Vibrasystems's Vertical in-line Pump Stand has a solid, heavy-duty welded reinforced steel frame, an elastomer bearing pad, and two neoprene bushings. Pump stand's metal frame is powder-coated for corrosion protection. The elastomer bearing pad provides good isolation from transferring minor vibrations. The bridge-bearing neoprene washer bushings isolate anchor bolts from the pump stand metal frame, preventing metal-to-metal contact.

**DPS** - Double Pump Stand consists of two (2) PS Pump Stands bolted together, for sizes up to 8". The DPS 10" and DPS 12" have a rigid welded frame design. The installation of those is recommended for extra heavy in-line vertical pumps where increase in structural rigidity is required and for installation in seismic active zones.

### Recommended for:

Pump stands are designed with two hole patterns: one that matches the cast iron flange dimensions for ANSI Class 125, and another that matches the flange dimensions for ANSI Class 250.



PS



DPS - (Double)

### Features:

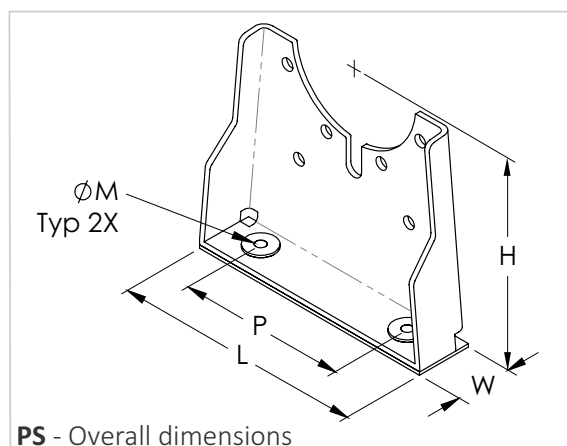
- ✓ Welded-in corners and rugged frame provide rigidity to the Vertical in-line Pump Stand.
- ✓ Elastomer Bearing Pad reduces transmission of minor vibrations.
- ✓ Powder coating provides good corrosion resistance.
- ✓ Bridge-bearing bushings prevent metal-to-metal contact.
- ✓ Easy and fast to be installed in the field.

### Recommendations:

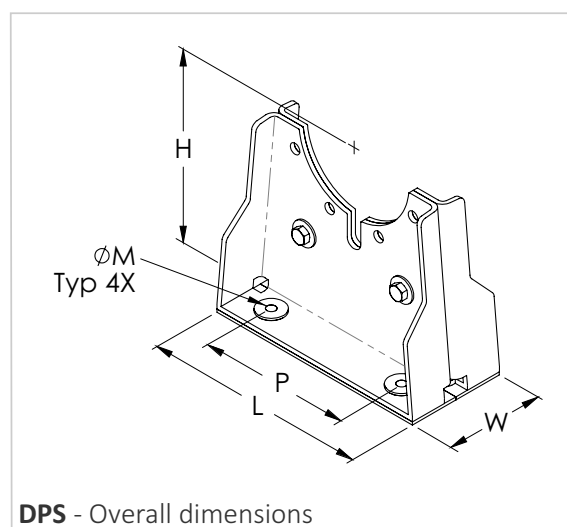
- ✓ Two (2) Pump Stands are required per a Vertical in-line Pump (please see installation instructions).
- ✓ Pump stands are designed with two hole patterns: one that matches the cast iron flange dimensions for ANSI Class 125, and another that matches the flange dimensions for ANSI Class 250.
- ✓ For seismic applications and extra heavy pumps, DPS models are recommended.
- ✓ Pump Stand with size over 12" is available upon request.

## HEAVY-DUTY VERTICAL IN-LINE PUMP STANDS (ANSI 125)

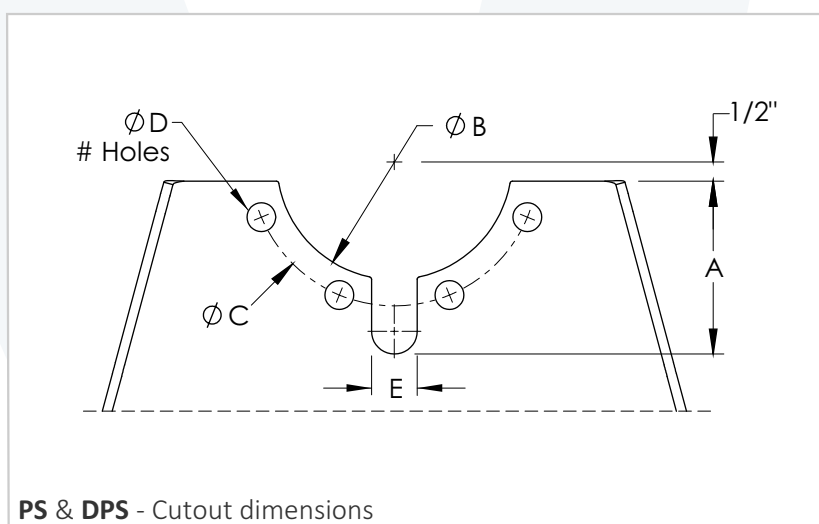
Model	Pump's Flange Size, (in)	Overall dimensions in inches					Shipping Weight, (lbs)
		H	W	L	M	P	
PS-1.5	1-1/2	10	3	12	5/8	6	10
PS-2	2	10	3	12	5/8	6	10
PS-2.5	2-1/2	10	3	12	5/8	6	10
PS-3	3	10	3	12	5/8	6	12
PS-4	4	12	4	18	5/8	12	22
PS-5	5	12	4	18	3/4	12	22
PS-6	6	15	4	18	3/4	12	38
PS-8	8	15	4	18	3/4	12	38



Model	Pump's Flange Size, (in)	Overall dimensions in inches					Shipping Weight, (lbs)
		H	W	L	M	P	
DPS-1.5	1-1/2	10	6	12	5/8	6	20
DPS-2	2	10	6	12	5/8	6	20
DPS-2.5	2-1/2	10	6	12	5/8	6	20
DPS-3	3	10	6	12	5/8	6	24
DPS-4	4	12	8	18	5/8	12	44
DPS-5	5	12	8	18	3/4	12	44
DPS-6	6	15	8	18	3/4	12	76
DPS-8	8	15	8	18	3/4	12	76
DPS-10	10	15	8	25	3/4	22	80
DPS-12	12	15	8	28	3/4	25	88



Pump's Flange Size, (in)	Cutout's dimension in inches					
	A	B	C	D	# Holes	E
1-1/2	2.50	2.87	3.87	5/8	2	1.00
2	3.00	3.63	4.75	3/4	2	1.13
2-1/2	3.50	4.13	5.50	3/4	2	1.13
3	3.75	4.63	6.00	3/4	2	1.13
4	4.50	6.13	7.50	3/4	4	1.19
5	5.25	7.13	8.50	7/8	4	1.19
6	5.75	8.13	9.50	7/8	4	1.25
8	7.00	10.13	11.75	7/8	4	1.25
10	7.75	12.50	14.25	1	6	1.19
12	9.25	15.00	17.00	1	6	1.19

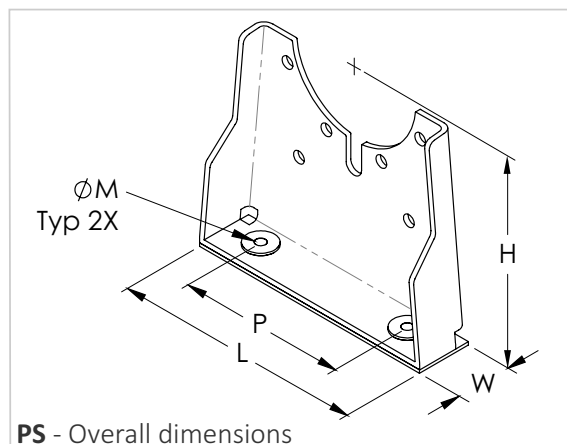


### Notes:

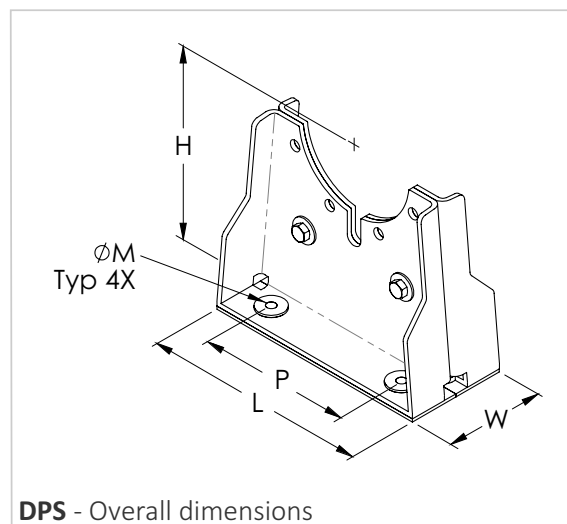
- 1) Bolt holes and cutouts are sized to match ANSI 125 cast iron flange dimensions.
- 2) Pump Stand must be installed in pairs (2 PS or DPS per inline Pump). Please see Installation Instructions for more information.
- 3) Pump Stands 10" and 12" have a heavy-duty welded frame design. Please see their submittal for more information.

## HEAVY-DUTY VERTICAL IN-LINE PUMP STANDS (ANSI 250)

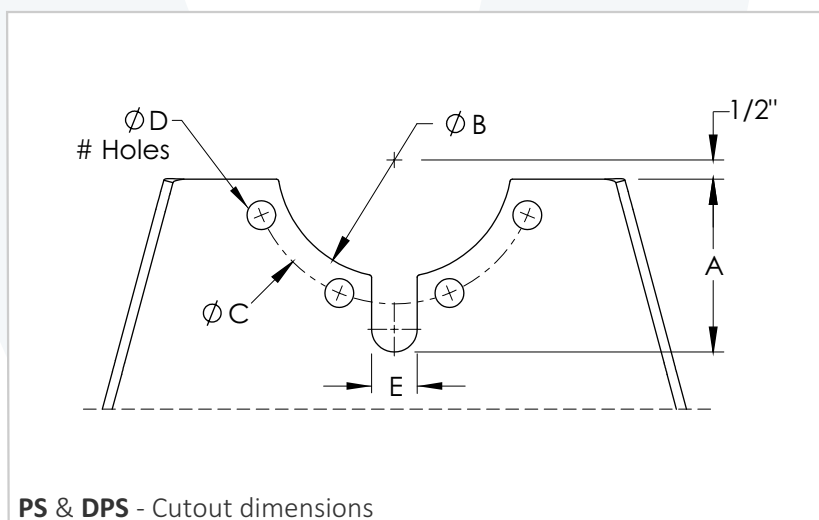
Model	Pump's Flange Size, (in)	Overall dimensions in inches					Shipping Weight, (lbs)
		H	W	L	M	P	
PS-2-250	2	10	4	12	5/8	8	14
PS-3-250	3	10	4	12	5/8	8	14
PS-4-250	4	12	4-1/2	18	3/4	12	32.5
PS-5-250	5	12	4-1/2	18	3/4	12	32.5
PS-6-250	6	14	4-1/2	20	1	14	37.5
PS-8-250	8	14	4-1/2	20	1	14	37.5



Model	Pump's Flange Size, (in)	Overall dimensions in inches					Shipping Weight, (lbs)
		H	W	L	M	P	
DPS-2-250	2	10	8	12	5/8	8	29
DPS-3-250	3	10	8	12	5/8	8	29
DPS-4-250	4	12	9	18	3/4	12	66
DPS-5-250	5	12	9	18	3/4	12	66
DPS-6-250	6	14	9	20	1	14	76
DPS-8-250	8	14	9	20	1	14	76



Pump's Flange Size, (in)	Cutout's dimension in inches					
	A	B	C	D	# Holes	E
2	3.25	3.63	5.00	0.75	4	0.50
3	4.50	5.00	6.63	0.88	4	1.06
4	5.00	6.13	7.88	7/8	4	1.06
5	5.75	7.50	9.25	7/8	4	1.19
6	6.25	8.63	10.63	1	6	1
8	7.50	10.75	13.00	1	6	1

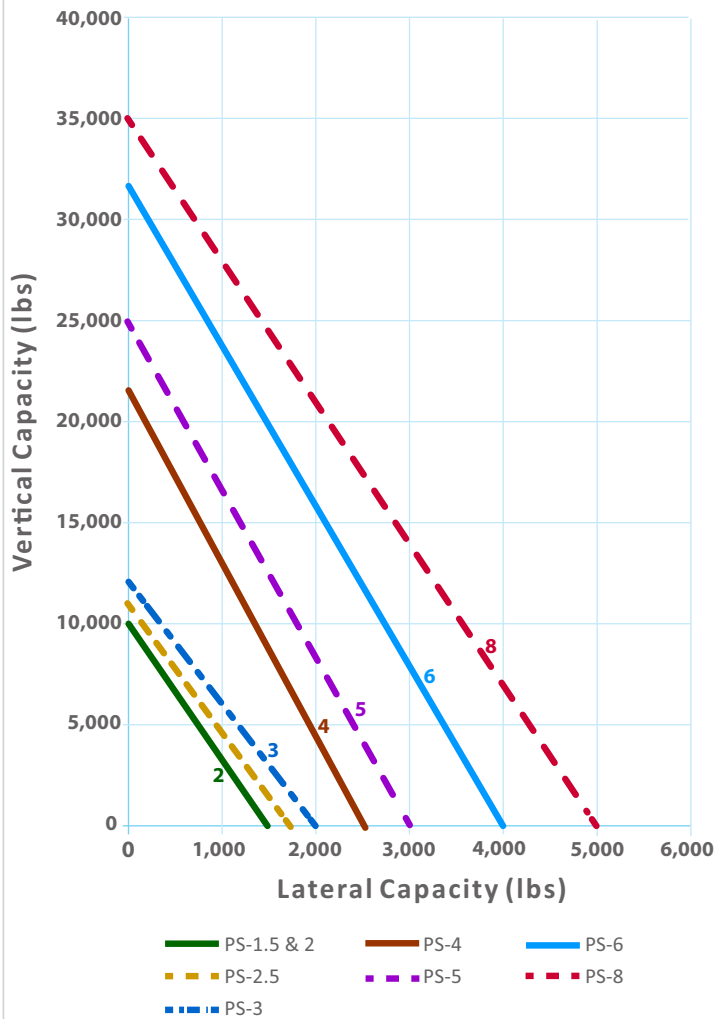


### Notes:

- 1) Bolt holes and cutouts are sized to match ANSI 250 and ANSI 300 flange dimensions.
- 2) Elastomer Pad reduces minor vibration while Bridge-Bearing Neoprene Washer Bushings prevent metal to metal contact.
- 3) Pump Stands are made from rugged steel and painted for corrosion protection.
- 4) DPS consists of two PS Pump Stands bolted together; thus, the structural rigidity is increased.
- 5) Pump Stands must be installed in pairs for in-line pumps (see installation instructions).

## HEAVY-DUTY VERTICAL IN-LINE PUMP STANDS

PS - Pump Stand Capacity Chart



DPS - Pump Stand Capacity Chart

