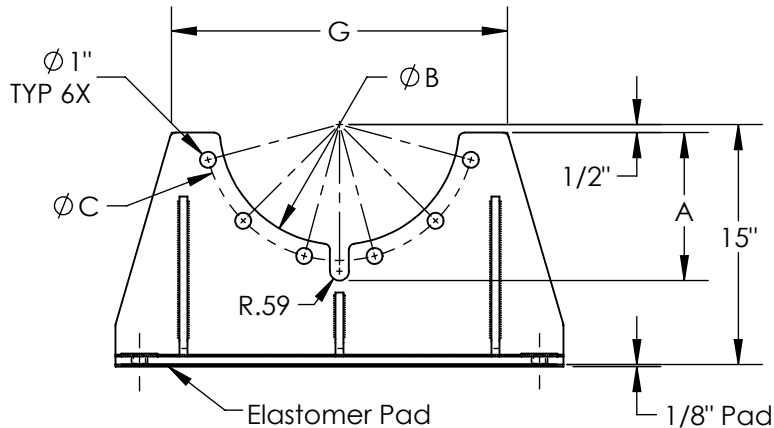
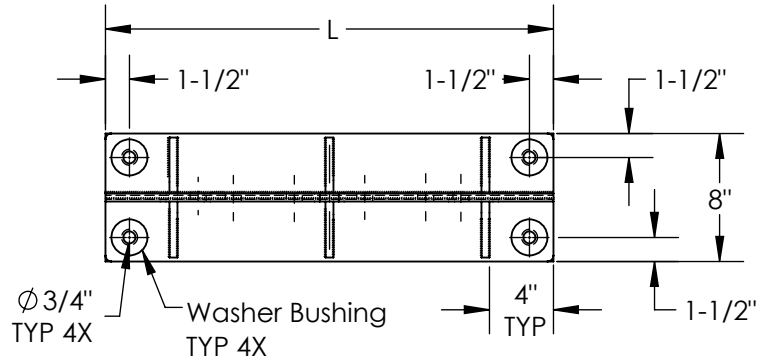
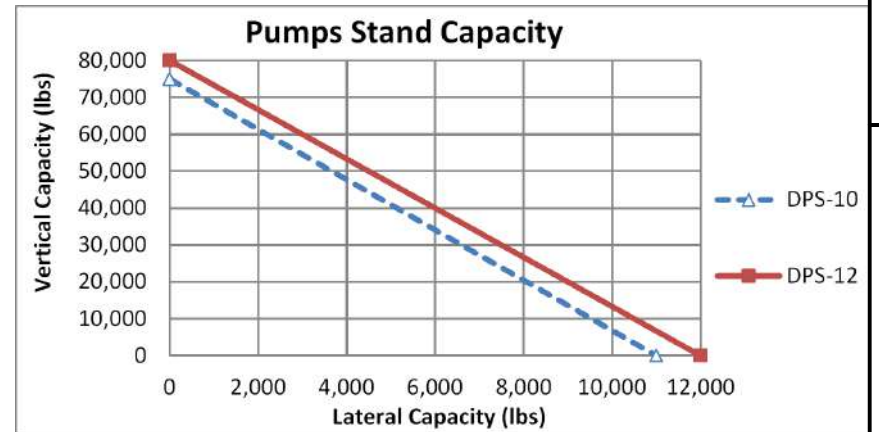
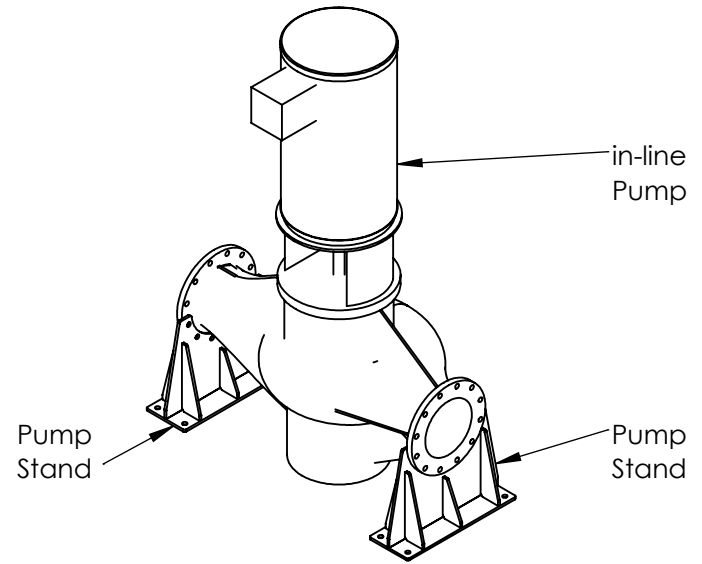


Model	Pipe size, (in)	Dimensions in Inches, (in)					Ship. weight (lbs)	Qty.
		A	B	C	L	G		
DPS-10	10	7.75	12.50	14.25	25	18	80	
DPS-12	12	9.25	15	17	28	21	88	



**Notes:**

1. Bolt holes and cutouts are sized to match ANSI 125 cast iron flange dimensions.
2. Elastomer Pad reduces minor vibration while Bridge-Bearing Neoprene Washer Bushings prevent metal to metal contact.
3. Pump Stands are made from rugged welded steel and painted for corrosion protection.
4. Pump Stands must be installed in pairs for in-line pumps (see installation instructions).



NAME	DATE
DRAWN	2023-07-11
APPR.	--
QUANTITY	01
UNLESS OTHERWISE SPECIFIED: 3RD ANGLE PROJECTION DIMENSIONS ARE IN INCHES TOLERANCES: ANGULAR ±1° FRACTIONAL ±.025 TWO PLACE DECIMAL ±.010 THREE PLACE DECIMAL ±.006	
MODEL: <b>DPS-10 &amp; 12</b>	

**VibraSystems Inc**

www.vibrasystems.com

PART:  
**Submittal - Pump Stand  
10" to 12" Pipe Size**

SIZE	DWG. NO.	REV
<b>A</b>	<b>126-92-00-A</b>	<b>A</b>

SCALE: 1:12 DO NOT SCALE DRAWING SHEET 1 OF 1