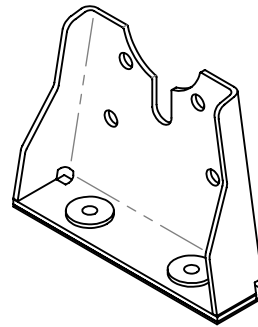
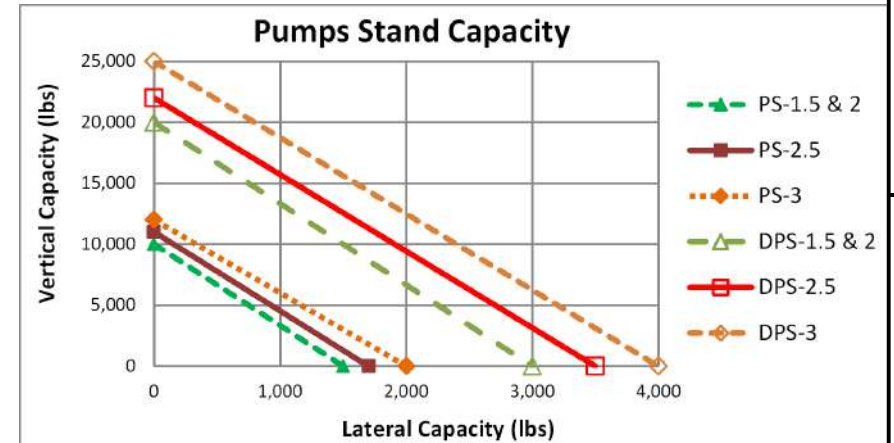
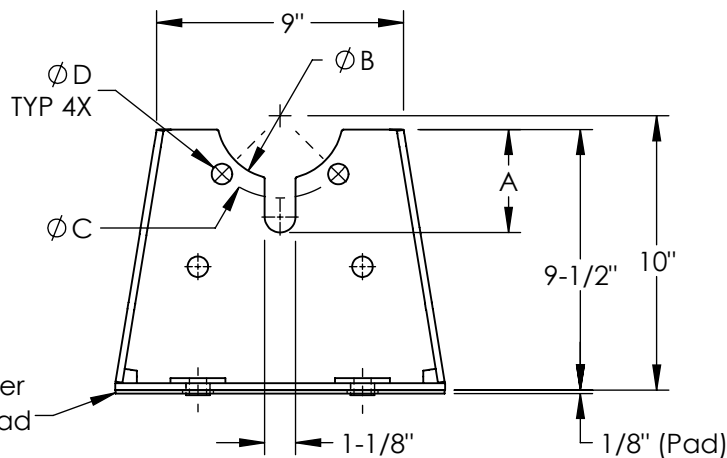
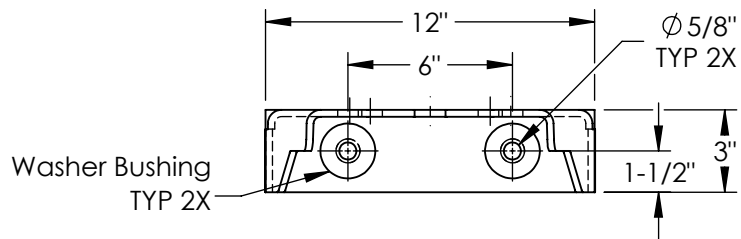
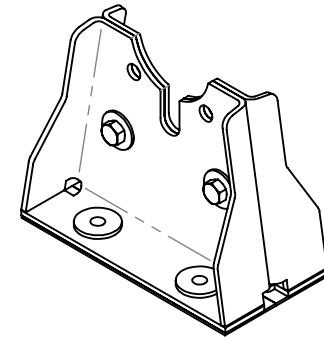


Model	Pipe size, (in)	Dimensions, (in)				Ship. Weight (lbs)	Qty.
		A	B	C	D		
PS-1.5	1 1/2	2.50	2.88	3.88	0.63	10	
PS-2	2	3.00	3.63	4.75	0.75	10	
PS-2.5	2 1/2	3.50	4.13	5.50	0.75	10	
PS-3	3	3.75	4.63	6.00	0.75	12	
DPS-1.5	1 1/2	2.50	2.88	3.88	0.63	20	
DPS-2	2	3.00	3.63	4.75	0.75	20	
DPS-2.5	2 1/2	3.50	4.13	5.50	0.75	20	
DPS-3	3	3.75	4.63	6.00	0.75	24	

## PS - models



## DPS - models



	NAME	DATE
DRAWN	R.D.	2025-05-08
APPR.	--	--
QUANTITY	01	
UNLESS OTHERWISE SPECIFIED:		
3RD ANGLE PROJECTION		
DIMENSIONS ARE IN INCHES		
TOLERANCES:		
ANGULAR ± 1°		
FRACTIONAL ± .025		
TWO PLACE DECIMAL ± .010		
THREE PLACE DECIMAL ± .006		
MODEL:		
PS & DPS		

**VibraSystems Inc**

www.vibrasystems.com

PART:

Submittal - Pump Stand  
1.5" to 3" Pipe Size

SIZE	DWG. NO.	REV
<b>A</b>	84-100-00-D	<b>D</b>
SCALE: 1:7	DO NOT SCALE DRAWING	SHEET 1 OF 1

## Notes:

1. Bolt holes and cutouts are sized to match ANSI 125 cast iron flange dimensions.
2. Elastomer Pad reduces minor vibration while Bridge-Bearing Neoprene Washer Bushings prevents metal to metal contact.
3. Pump Stands are made from rugged steel and painted for corrosion protection.
4. DPS consists of two PS Pump Stands bolted together; thus, the structural rigidity is increased.
5. Pump Stands must be installed in pairs for in-line pumps (see installation instructions).