

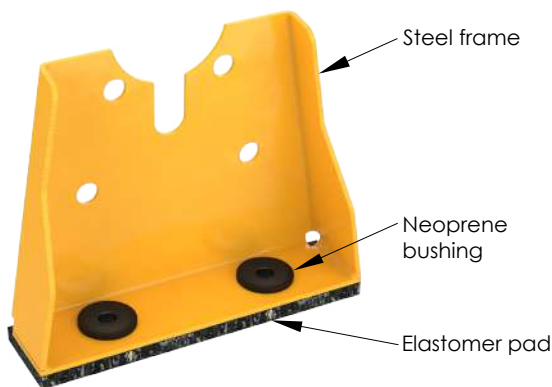
HEAVY-DUTY VERTICAL IN-LINE PUMP STANDS

PS – Pump Stands are commonly used in the industry to give structural support to vertical in-line pumps while providing isolation from minor vibrations. The new line of Vibrasystems's Vertical in-line Pump Stand has a solid, heavy-duty welded reinforced steel frame, an elastomer bearing pad, and two neoprene bushings. Pump stand's metal frame is powder-coated for corrosion protection. The elastomer bearing pad provides good isolation from transferring minor vibrations. The bridge-bearing neoprene washer bushings isolate anchor bolts from the pump stand metal frame, preventing metal-to-metal contact.

DPS - Double Pump Stand consists of two (2) PS Pump Stands bolted together, for sizes up to 8". The DPS 10" and DPS 12" have a rigid welded frame design. The installation of those is recommended for extra heavy in-line vertical pumps where increase in structural rigidity is required and for installation in seismic active zones.

Recommended for:

Vibrasystem's Vertical in-line Pump Stands are designed for Vertical in-line pumps ranging from 1-1/2" to 12" pump's flange size. Pump Stand's holes are designed to match cast iron flange dimensions ANSI class 125. Double Pump Stands (**DPS** models) are recommended for extra heavy vertical in-line pumps to increase stability and protect from seismic forces.



PS



DPS - (Double)

Features:

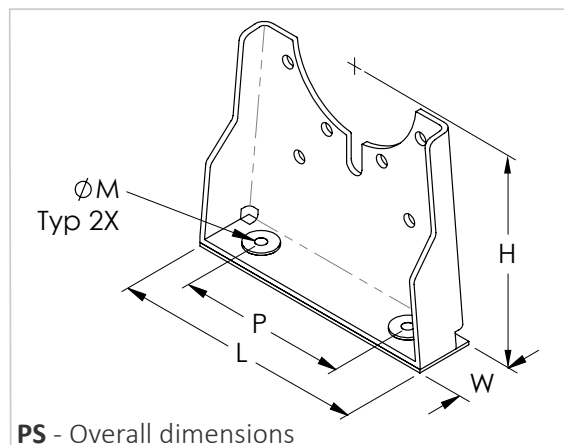
- ✓ Welded-in corners and rugged frame provide rigidity to the Vertical in-line Pump Stand.
- ✓ Elastomer Bearing Pad reduces transmission of minor vibrations.
- ✓ Powder coating provides good corrosion resistance.
- ✓ Bridge-bearing bushings prevent metal-to-metal contact.
- ✓ Easy and fast to be installed in the field.

Recommendations:

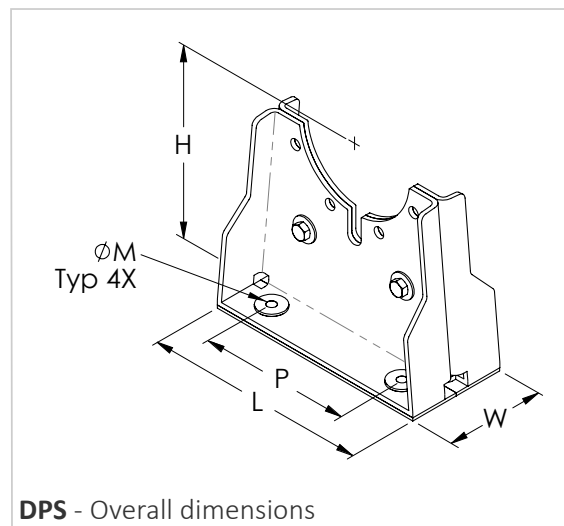
- ✓ Two (2) Pump Stands are required per a Vertical in-line Pump (please see installation instructions).
- ✓ Pump Stand's holes are designed to match cast iron flanges dimensions ANSI class 125.
- ✓ For seismic applications and extra heavy pumps, DPS models are recommended.
- ✓ Pump Stand with size over 12" is available upon request.

HEAVY-DUTY VERTICAL IN-LINE PUMP STANDS

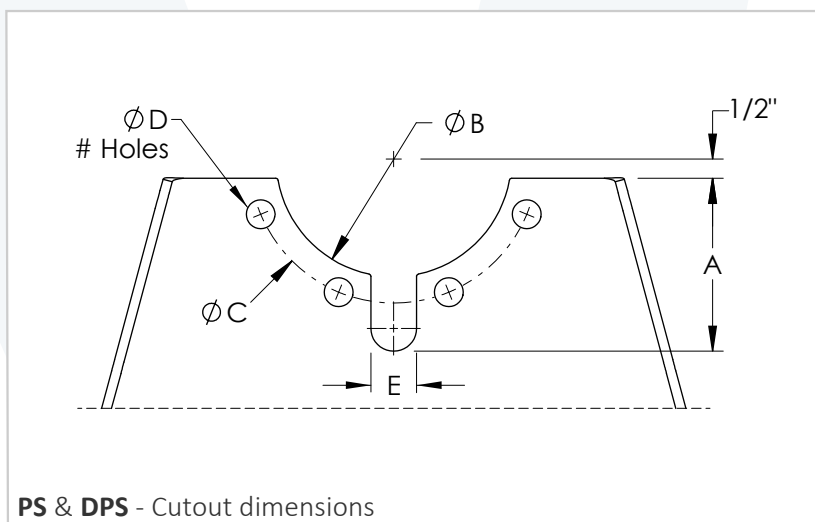
Model	Pump's Flange Size, (in)	Overall dimensions in inches					Shipping Weight, (lbs)
		H	W	L	M	P	
PS-1.5	1-1/2	10	3	12	5/8	6	10
PS-2	2	10	3	12	5/8	6	10
PS-2.5	2-1/2	10	3	12	5/8	6	10
PS-3	3	10	3	12	5/8	6	12
PS-4	4	12	4	18	5/8	12	22
PS-5	5	12	4	18	3/4	12	22
PS-6	6	15	4	18	3/4	12	38
PS-8	8	15	4	18	3/4	12	38



Model	Pump's Flange Size, (in)	Overall dimensions in inches					Shipping Weight, (lbs)
		H	W	L	M	P	
DPS-1.5	1-1/2	10	6	12	5/8	6	20
DPS-2	2	10	6	12	5/8	6	20
DPS-2.5	2-1/2	10	6	12	5/8	6	20
DPS-3	3	10	6	12	5/8	6	24
DPS-4	4	12	8	18	5/8	12	44
DPS-5	5	12	8	18	3/4	12	44
DPS-6	6	15	8	18	3/4	12	76
DPS-8	8	15	8	18	3/4	12	76
DPS-10	10	15	8	25	3/4	22	80
DPS-12	12	15	8	28	3/4	25	88



Pump's Flange Size, (in)	Cutout's dimension in inches					
	A	B	C	D	# Holes	E
1-1/2	2.50	2.87	3.87	5/8	2	1.00
2	3.00	3.63	4.75	3/4	2	1.13
2-1/2	3.50	4.13	5.50	3/4	2	1.13
3	3.75	4.63	6.00	3/4	2	1.13
4	4.50	6.13	7.50	3/4	4	1.19
5	5.25	7.13	8.50	7/8	4	1.19
6	5.75	8.13	9.50	7/8	4	1.25
8	7.00	10.13	11.75	7/8	4	1.25
10	7.75	12.50	14.25	1	6	1.19
12	9.25	15.00	17.00	1	6	1.19

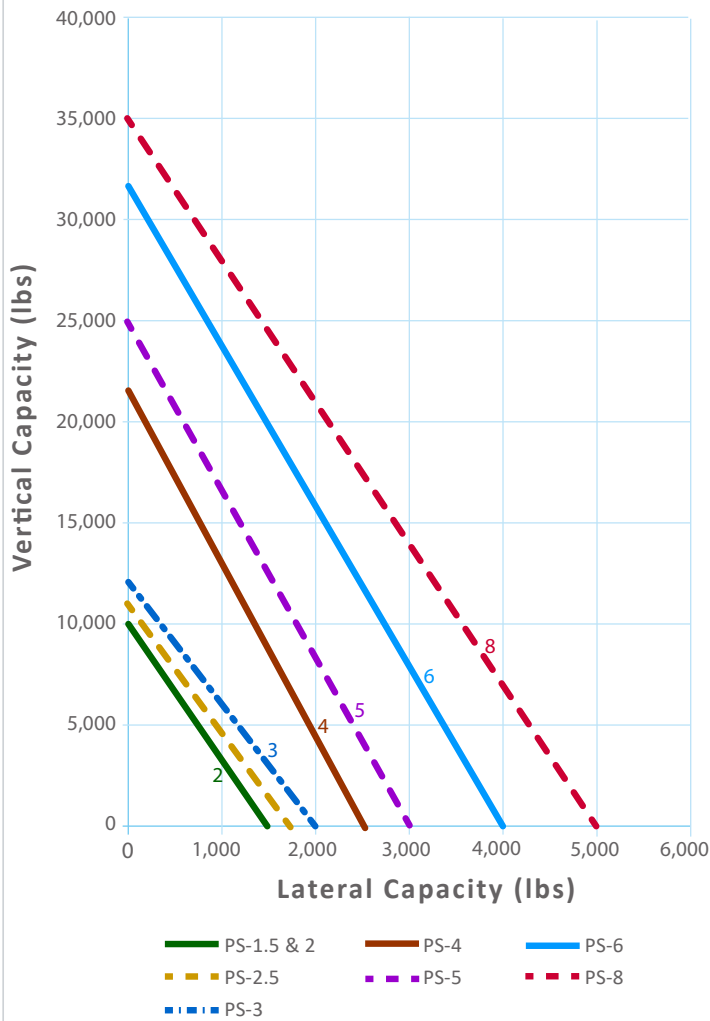


Notes:

- 1) Bolt holes and cutouts are sized to match ANSI 125 cast iron flange dimensions.
- 2) Pump Stand must be installed in pairs (2 PS or DPS per inline Pump). Please see Installation Instructions for more information.
- 3) Pump Stands 10" and 12" have a heavy-duty welded frame design. Please see their submittal for more information.

HEAVY-DUTY VERTICAL IN-LINE PUMP STANDS

PS - Pump Stand Capacity Chart



DPS - Pump Stand Capacity Chart

