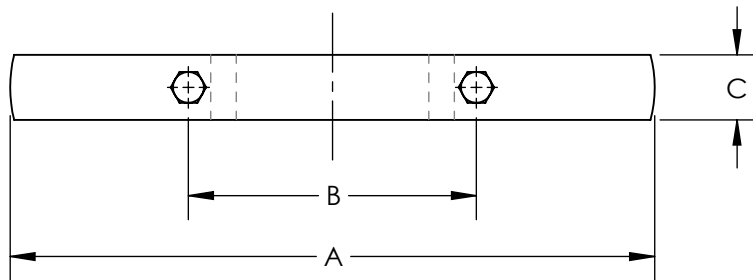
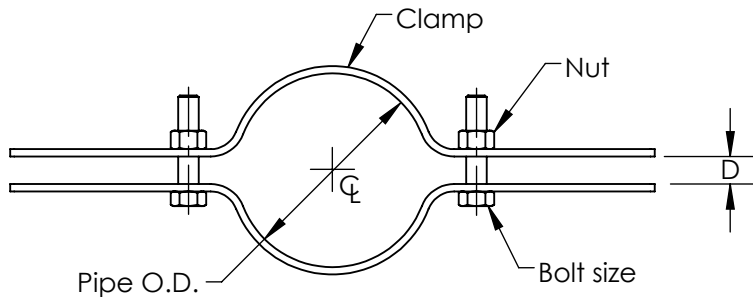


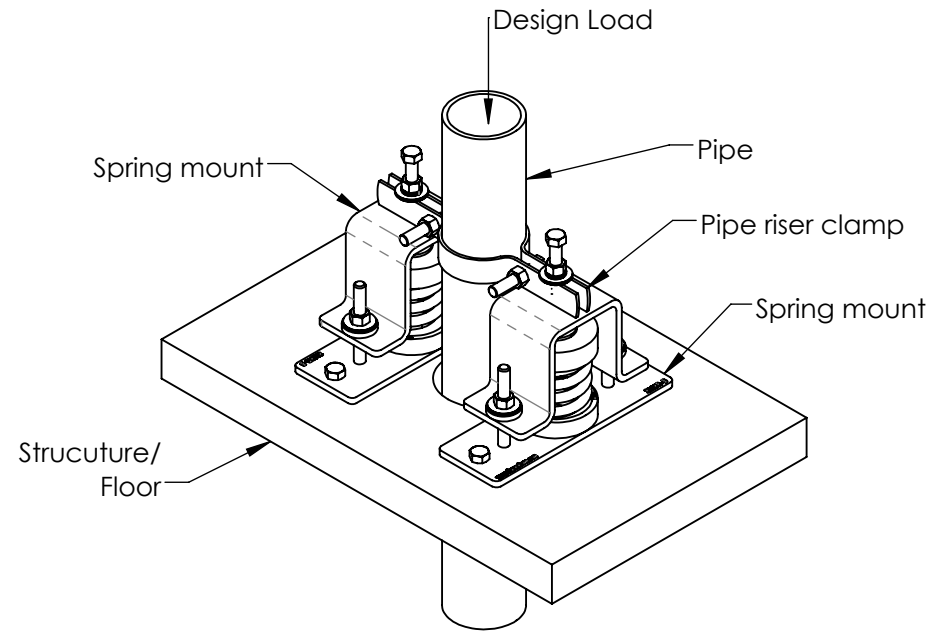
Model	Pipe size (in)	Dimensions in inches (in)						Qty.
		A	B	C	D	Bolt Size	Max. Load	
PRC 2	2	10.25	4.06	1.18	1/2	3/8	320	
PRC 2.5	2 1/2	10.75	4.63	1.18	1/2	3/8	410	
PRC 3	3	11.75	5.50	1.18	1/2	3/8	530	
PRC 4	4	13.25	7.00	1.18	7/8	1/2	770	
PRC 5	5	14.25	8.25	1.57	7/8	1/2	1,520	
PRC 6	6	18.75	10.38	1.67	1	1/2	1,630	
PRC 8	8	18.88	12.75	2.00	1	5/8	2,520	
PRC 10	10	21.88	15.50	2.00	1	5/8	2,520	

B



A

Example of a Typical Installation



B

Notes:

1. Pipe Riser Clamps are made of carbon steel and are electro galvanized for great corrosion protection.
2. Pipe Riser Clamps complies with: ANSI/MSS SP-69 & SP-58 (Type 8), WW-H-171E & A-A-1192A (Type 8).
3. Pipe Riser Clamps are designed for the support or restraint of vertical steel pipes. It is designed to attach to pipe and to rest onto spring mounts so the piping weight is distributed over several floors (see installation instructions for further information).

	NAME	DATE	VibraSystems Inc www.vibrasystems.com		
DRAWN		2021-09-13			
APPR.	--	--	PART: Submittal - Pipe Riser Clamps		
QUANTITY		01			
UNLESS OTHERWISE SPECIFIED: 3RD ANGLE PROJECTION DIMENSIONS ARE IN INCHES TOLERANCES: ANGULAR ± 1° FRACTIONAL ± .025 TWO PLACE DECIMAL ± .010 THREE PLACE DECIMAL ± .006			SIZE	DWG. NO.	REV
MODEL: PRC			A	108-30-00-A	A
			SCALE: 1:2	DO NOT SCALE DRAWING	SHEET 1 OF 1

A