



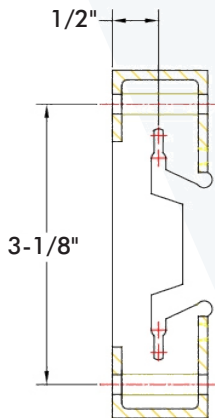
EasySound Furring Clip resiliently secures common drywall furring channel Offering significantly higher STC values than drywall attached to resilient channel, EasySound ensures that installers will not inadvertently screw through the "resilient" leg of the channel into the joist or stud.

The EasySound Advantage

- Low cost for high performance.
- Flexible "snap-on" clips install quickly, no pinching channel and allows for height adjustments during installation of channel
- Error free installation of standard drywall furring channel.
- Eliminates accidental short circuiting common with resilient channel
- Easiest method for STC 55+ stud wall assemblies
- Can accommodate furring channel widths from 2.38" - 2.75"

Step 1

Attached clips per Easyflex layout guidelines for walls or ceilings.
See attached layout drawing.



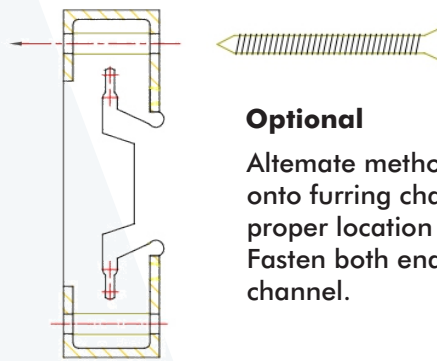
Step 2

Secure clips with a single fastener on one end only.

Wood - Use #8 x 2-1/2" coarse thread screws.

Steel - Use #8, 10, or 12 x 1-5/8" self-tapping Type S screws.

Concrete or Masonry - Use #3/16" dia x 2-1/4" Tapcon or equal anchor

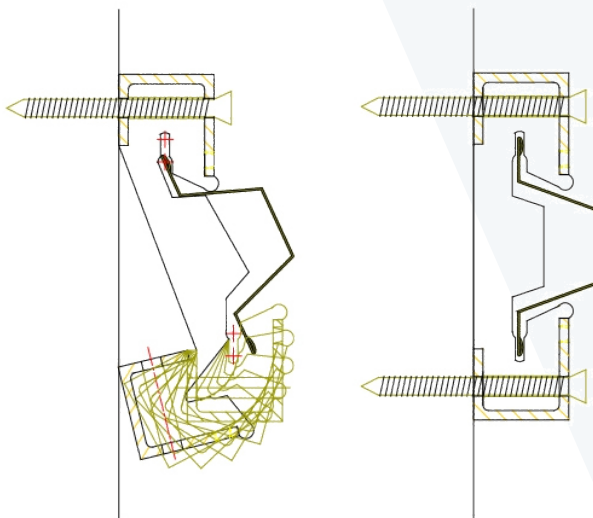


Optional

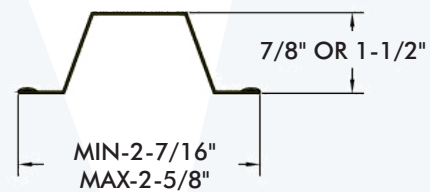
Alternate method for Step 2. Snap clips onto furring channel. Hand slide clips to proper location on the furring channel. Fasten both ends of the clip to secure the channel.

Step 3

Grip unsecured rubber end, snap in channel. Secure with second screw/anchor.



Furring Channel Dimensions



Furring Channel Requirements

Minimum 25 ga with hemmed edge.

Standard - 7/8" deep channel

Optional - 1-1/2" deep channel for additional furring space.

Splices furring channel with a 6-in overlap and secure overlapped pieces with wire or screws per standard industry practice.