



SPECIAL SEISMIC CERTIFICATION CERTIFICATE OF COMPLIANCE

Pre No. CC241571-01-R1

Equipment Manufacturer

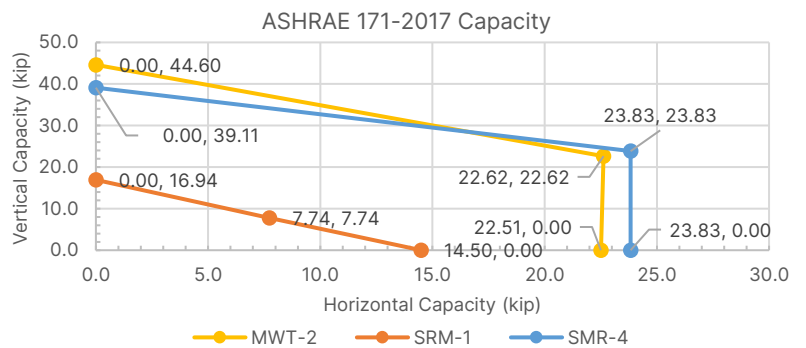
Manufacturer: Vibrasystems Inc.
Model Line: SRM-1, MWT-2, SMR-4
Product Type: Supports and Attachments
Address: 293 Rayette Road Unit 5/6
Concord, Ontario, Canada L4K 2G1
Phone: (905) 738-7810
Website: vibrasystems.com

Certification Agency

Issue Date: 15-Sep-2025 (revised 7-May-2026)
Expiration Date: 7-May-2032
Agency Name: Pre Compliance
Address: 324 NW Hill Street
Bend, OR 97703
Phone: (541) 241-2310
Website: go-pre.com

Seismic Certification Parameters

Method of Certification: Cyclic Load Testing
Assessment Standard: ASHRAE 171-2017
Building Codes: IBC 2024
Design Method: LRFD (Nominal Capacities)



Certification Terms

1. For specific models covered under this certification, see Table of Certified Components accompanying this certificate.
2. This certification is dependent on proper mounting and anchorage in the listed mounting configuration(s). This certification does not specify anchorage design due to the variability of supporting structure and substrate conditions that may be present at the installation location.
3. Certified products are approved for the Building Codes listed and previous editions of those codes. Extension of this certificate to other Building Codes requires assessment of parameters by Pre Compliance. The capacities listed are valid for all soil types and seismic design categories.
4. In accordance with the assessment standard listed, the capacities presented are valid for both seismic and wind design, as well as other lateral loads. Installation shall be in accordance with manufacturers' printed instructions.

Approval

I attest that I have impartially reviewed the documentation supporting this special seismic certification and have confirmed it is in general conformance with the referenced codes and standards.

Name: Andy Coughlin, SE
Title: Principal Engineer
Email: andy@go-pre.com
Phone: (415) 635-8461
License: S6082 (California)

Signature:





SPECIAL SEISMIC CERTIFICATION CERTIFIED COMPONENTS

Pre No. CC241571-01-R1

Manufacturer: Vibrasystems Inc.
Product Type: Supports and Attachments
Model Line: SRM-1, MWT-2, SMR-4

Rated Capacities (kips)

$F_{vertical} = 44.60$ $F_{45^\circ vert} = 22.62$
 $F_{horizontal} = 22.51$ $F_{45^\circ horiz} = 22.62$

Building Codes

IBC 2024

TABLE 1 Vibrasystems MWT-2 Isolators

Construction Summary

Painted steel construction with neoprene bushings

Options Summary

1", 2", and 3" rated deflections

Model Line	Model	Max. Dimensions (in)			Wt. (lb)	Notes	UUT
		D	W	H			
MWT-2 (1" Rated Deflection)	MWT-2-302	8	14.25	6.125	52	Rated Load: 390lb	Interp.
	MWT-2-303	8	14.25	6.125	52	Rated Load: 800lb	1
	MWT-2-304	8	14.25	6.125	52	Rated Load: 1,060lb	Interp.
	MWT-2-303-311	8	14.25	6.125	54	Rated Load: 1,300lb	Interp.
	MWT-2-305	8	14.25	6.125	52	Rated Load: 1,650lb	Interp.
	MWT-2-306	8	14.25	6.125	52	Rated Load: 2,000lb	Interp.
	MWT-2-306-311	8	14.25	6.125	54	Rated Load: 2,400lb	Interp.
	MWT-2-305-312	8	14.25	6.125	54	Rated Load: 2,800lb	Interp.
	MWT-2-307	8	14.25	6.125	52	Rated Load: 3,400lb	Interp.
	MWT-2-308	8	14.25	6.125	52	Rated Load: 4,000lb	Interp.
	MWT-2-307-312	8	14.25	6.125	54	Rated Load: 4,660lb	Interp.
	MWT-2-309	8	14.25	6.125	52	Rated Load: 5,200lb	Interp.
	MWT-2-308-313	8	14.25	6.125	54	Rated Load: 5,980lb	Interp.
	MWT-2-308-314	8	14.25	6.125	54	Rated Load: 6,500lb	Interp.
MWT-2-309-314	8	14.25	6.125	54	Rated Load: 7,700lb	Interp.	
MWT-2 (2" Rated Deflection)	MWT-2-350	8	14.25	6.125	54	Rated Load: 160lb	Interp.
	MWT-2-350-140	8	14.25	6.125	56	Rated Load: 300lb	Interp.
	MWT-2-352	8	14.25	6.125	54	Rated Load: 360lb	Interp.
	MWT-2-402	8	14.25	6.125	54	Rated Load: 400lb	Interp.
	MWT-2-352-140	8	14.25	6.125	56	Rated Load: 500lb	Interp.
	MWT-2-403	8	14.25	6.125	54	Rated Load: 696lb	Interp.
	MWT-2-404	8	14.25	6.125	54	Rated Load: 906lb	Interp.
	MWT-2-405	8	14.25	6.125	54	Rated Load: 1,180lb	Interp.
	MWT-2-406	8	14.25	6.125	54	Rated Load: 1,352lb	Interp.
	MWT-2-407	8	14.25	6.125	54	Rated Load: 1,574lb	Interp.
	MWT-2-408	8	14.25	6.125	54	Rated Load: 1,836lb	Interp.
MWT-2-409	8	14.25	6.125	54	Rated Load: 2,000lb	Interp.	
MWT-2-410	8	14.25	6.125	54	Rated Load: 2,500lb	Interp.	

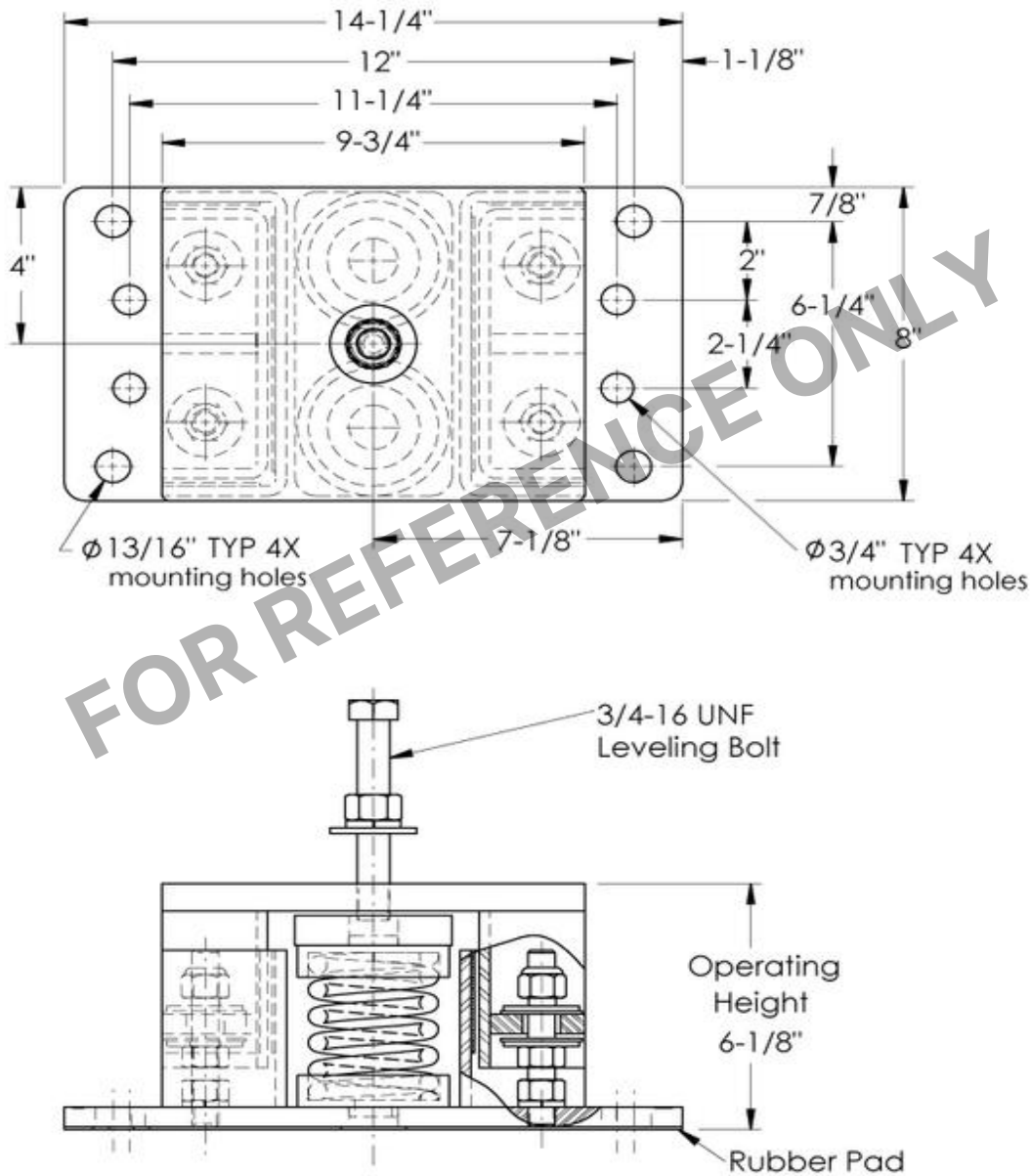
Manufacturer: Vibrasystems Inc.
Product Type: Supports and Attachments
Model Line: SRM-1, MWT-2, SMR-4

Rated Capacities (kips)			
F_{vertical} =	44.60	$F_{45^{\circ}\text{vert}}$ =	22.62
$F_{\text{horizontal}}$ =	22.51	$F_{45^{\circ}\text{horiz}}$ =	22.62

Building Codes
IBC 2024

TABLE 1

Vibrasystems MWT-2 Isolators





SPECIAL SEISMIC CERTIFICATION CERTIFIED COMPONENTS

Pre No. CC241571-01-R1

Manufacturer: Vibrasystems Inc.
Product Type: Supports and Attachments
Model Line: SRM-1, MWT-2, SMR-4

Rated Capacities (kips)

$F_{\text{vertical}} = 16.94$ $F_{45^{\circ}\text{vert}} = 7.74$
 $F_{\text{horizontal}} = 14.50$ $F_{45^{\circ}\text{horiz}} = 7.74$

Building Codes

IBC 2024

TABLE 2 Vibrasystems SRM-1 Isolators

Construction Summary

Painted steel construction with neoprene bushings

Options Summary

1", 2", and 3" rated deflections; Flat Top ("F") and Bolt Top ("T")

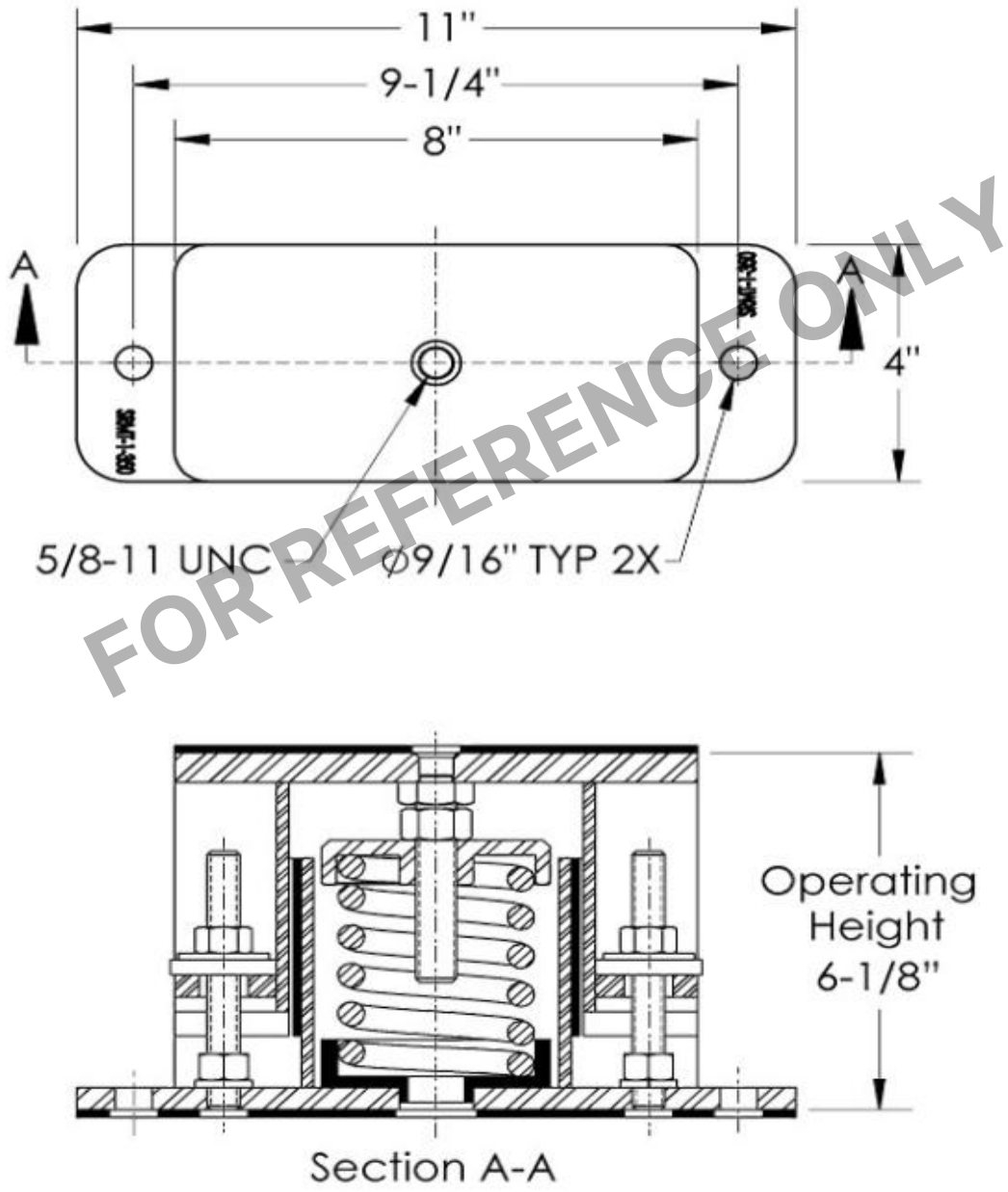
Model Line	Model	Max. Dimensions (in)			Wt. (lb)	Notes	UUT
		D	W	H			
SRM-1 (1" Rated Deflection)	SRM-1-302	4	11	6.125	21	Rated Load: 195lb	Interp.
	SRM-1-303	4	11	6.125	21	Rated Load: 400lb	Interp.
	SRM-1-304	4	11	6.125	21	Rated Load: 530lb	Interp.
	SRM-1-303-311	4	11	6.125	22	Rated Load: 650lb	Interp.
	SRM-1-305	4	11	6.125	21	Rated Load: 825lb	Interp.
	SRM-1-306	4	11	6.125	21	Rated Load: 1,000lb	Interp.
	SRM-1-306-311	4	11	6.125	22	Rated Load: 1,200lb	Interp.
	SRM-1-305-312	4	11	6.125	22	Rated Load: 1,400lb	Interp.
	SRM-1-307	4	11	6.125	22	Rated Load: 1,700lb	Interp.
	SRM-1-308	4	11	6.125	22	Rated Load: 2,000lb	Interp.
	SRM-1-307-312	4	11	6.125	23	Rated Load: 2,330lb	Interp.
	SRM-1-309	4	11	6.125	22	Rated Load: 2,600lb	Interp.
	SRM-1-308-313	4	11	6.125	23	Rated Load: 2,990lb	Interp.
	SRM-1-308-314	4	11	6.125	23	Rated Load: 3,250lb	2
SRM-1-309-314	4	11	6.125	23	Rated Load: 3,850lb	Interp.	
SRM-1 (2" Rated Deflection)	SRM-1-350	4	11	6.125	21	Rated Load: 80lb	Interp.
	SRM-1-350-140	4	11	6.125	22	Rated Load: 150lb	Interp.
	SRM-1-352	4	11	6.125	21	Rated Load: 180lb	Interp.
	SRM-1-402	4	11	6.125	21	Rated Load: 200lb	Interp.
	SRM-1-352-140	4	11	6.125	22	Rated Load: 250lb	Interp.
	SRM-1-403	4	11	6.125	21	Rated Load: 348lb	Interp.
	SRM-1-404	4	11	6.125	21	Rated Load: 453lb	Interp.
	SRM-1-405	4	11	6.125	21	Rated Load: 590lb	Interp.
	SRM-1-406	4	11	6.125	21	Rated Load: 676lb	Interp.
	SRM-1-407	4	11	6.125	21	Rated Load: 787lb	Interp.
	SRM-1-408	4	11	6.125	21	Rated Load: 918lb	Interp.
	SRM-1-409	4	11	6.125	21	Rated Load: 1,000lb	Interp.
SRM-1-410	4	11	6.125	21	Rated Load: 1,250lb	Interp.	

Manufacturer: Vibrasystems Inc.
Product Type: Supports and Attachments
Model Line: SRM-1, MWT-2, SMR-4

Rated Capacities (kips)	
F _{vertical} =	16.94
F _{45°vert} =	7.74
F _{horizontal} =	14.50
F _{45°horiz} =	7.74

Building Codes
 IBC 2024

TABLE 2 Vibrasystems SRM-1 Isolators



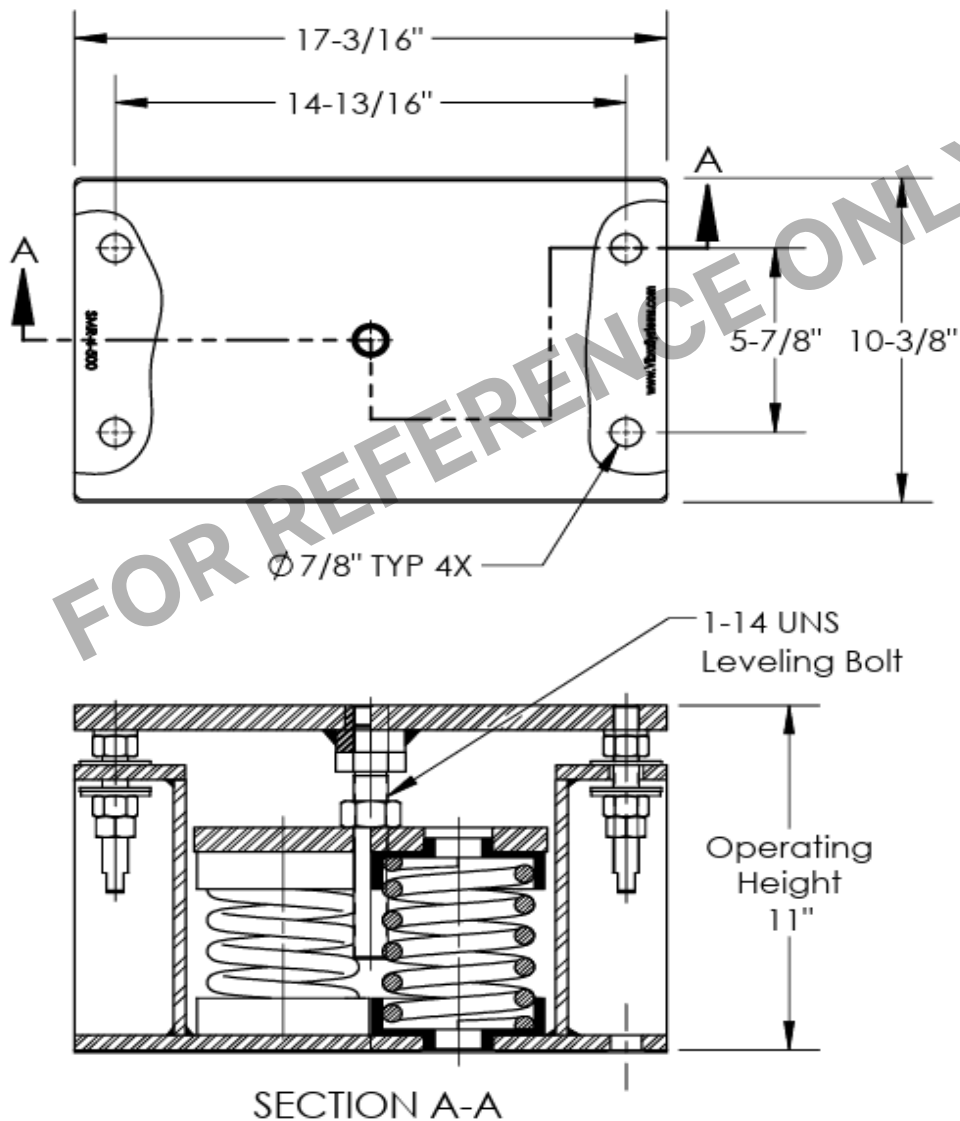
Manufacturer: Vibrasystems Inc.
Product Type: Supports and Attachments
Model Line: SRM-1, MWT-2, SMR-4

Rated Capacities (kips)			
F _{vertical} =	39.12	F _{45°vert} =	23.83
F _{horizontal} =	23.83	F _{45°horiz} =	23.83

Building Codes
IBC 2024

TABLE 3

Vibrasystems SMR-4 Isolators



UUT 1

Test Report# RJ9690P-1
QA-2343-1

Manufacturer: Vibrasystems Inc.
Model Line: SRM-1, MWT-2, SMR-4
Model Number: MWT-2-303
Serial Number: N/A

Rated Capacities (kips)			
F_{vertical} =	44.60	$F_{45^{\circ}\text{vert}}$ =	22.62
$F_{\text{horizontal}}$ =	22.51	$F_{45^{\circ}\text{horiz}}$ =	22.62

Dimensions/Weights			
Depth (in)	Width (in)	Height (in)	Weight (lbs.)
8	14.25	6.125	52

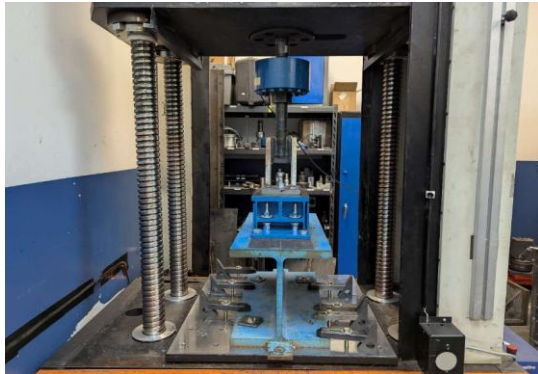
Failure Location		
F_{vertical}	$F_{\text{horizontal}}$	F_{45}
None	Top Bolt	Top Bolt

Building Codes
IBC 2024

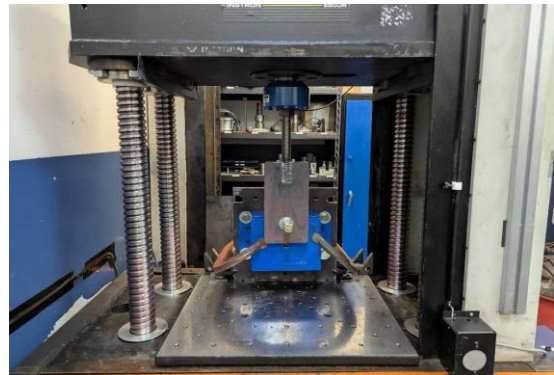
Test Criteria
ASHRAE 171-2017

Construction/Option Summary
Painted steel construction with neoprene bushings, 1" rated deflection

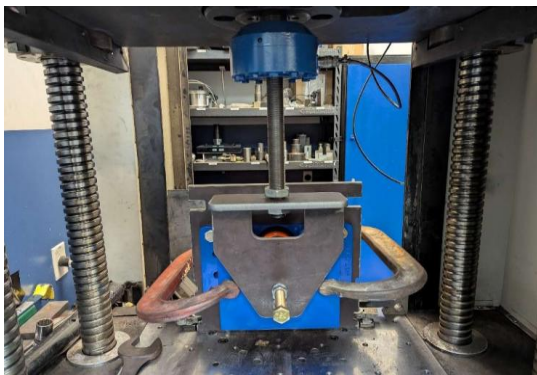
UUT Testing Details:



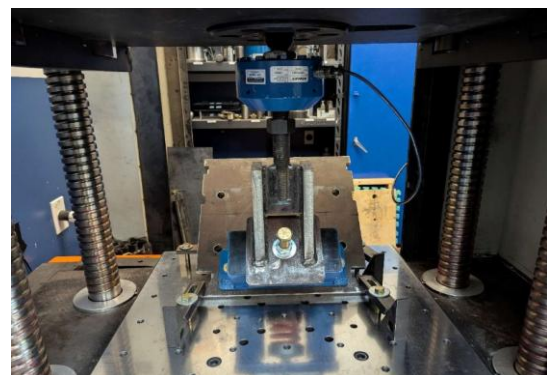
F_v



F_x



F_y



F_{45}

Note: 4 directions of testing were completed each with 3 replicates (12 total). Clamps were used to keep the UUT at the correct operating height.

UUT 2

Test Report# 19TRU420
RJ9690P-1

Manufacturer: Vibrasystems Inc.
Model Line: SRM-1, MWT-2, SMR-4
Model Number: SRM-1-308-314
Serial Number: N/A

Rated Capacities (kips)

$F_{\text{vertical}} =$	16.94	$F_{45^{\circ}\text{vert}} =$	7.74
$F_{\text{horizontal}} =$	14.50	$F_{45^{\circ}\text{horiz}} =$	7.74

Dimensions/Weights

Depth (in)	Width (in)	Height (in)	Weight (lbs.)
4	11	6.125	23

Failure Location

F_{vertical}	$F_{\text{horizontal}}$	F_{45}
Side Bolts	Top Bolt	Top Bolt

Building Codes

IBC 2024

Test Criteria

ASHRAE 171-2017

Construction/Option Summary

Painted steel construction with neoprene bushings, 1" rated deflection

UUT Testing Details:



F_v



F_x



F_y



F_{45}

Note: 4 directions of testing were completed each with 3 replicates (12 total).

UUT 3

Test Report# QA-1095-1

Manufacturer: Vibrasystems Inc.
Model Line: SRM-1, MWT-2, SMR-4
Model Number: SMRF-4-500
Serial Number: N/A

Rated Capacities (kips)			
$F_{vertical}$ =	39.12	$F_{45^\circ vert}$ =	23.83
$F_{horizontal}$ =	23.83	$F_{45^\circ horiz}$ =	23.83

Dimensions/Weights			
Depth (in)	Width (in)	Height (in)	Weight (lbs.)
10.245	17.125	11.35	130

Failure Location		
$F_{vertical}$	$F_{horizontal}$	F_{45}
None	Weld - Bottom Plate	Top Bolt

Building Codes
IBC 2024

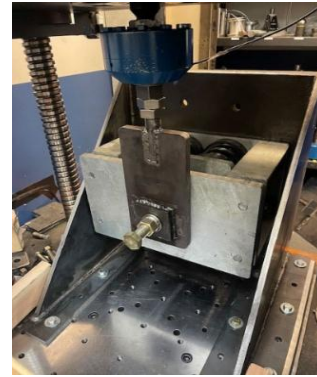
Test Criteria
ASHRAE 171-2017

Construction/Option Summary
Painted steel construction with neoprene bushings, 3" rated deflection

UUT Testing Details:



F_v



F_x



F_y



F_{45}

Note: 4 directions of testing were completed each with 3 replicates (12 total).